



***Volcano A's, PO Box 970, La Center, WA 98629***

***[www.volcanoas.net](http://www.volcanoas.net)***

Meeting: Church of the Nazarene – 16850 NE Fourth Plain Blvd, Vancouver, WA - Second Monday of Month – 7:00 PM

Lunch and Take-Out at Benny's Pizza & Café on 4219 St Johns Rd NE, Vancouver, WA

***Volume 10 Issue 8***

***August***

***2021***

---

*2020, 2017 & 2015 MAFCA Newsletter Certificate of Merit  
2018 – MAFCA Website of Distinction  
2017 MAFCA Website Certificate of Merit  
2013 MAFCA Newsletter of the Year 2015 & 2013 MAFCA Website of the Year*



**The quail pointing out Mt. Rainier, we were waiting for the ferry to leave Anderson Island.  
1930 Town sedan, Roger & Kathy Green, Ridgefield, Washington.**



## ***President's Note July 23, 2021***

Because of hot weather, Corley is troubled with scheduling his Scavenger Tour, watch your email for a possible event late this week.

Our August meeting will be at the Lane's at 2:00 pm. The early time would allow us to have a picnic lunch and then our monthly meeting. The picnic would be a potluck with the club providing chicken and drinks.

Now is the time to be thinking about the election of officers. The Board will be discussing **Article V, Section 5 Qualifications of Elected Positions** of the Club Bylaws. Section 5 of Article V states: *"A nominee for the position of President must have held a Board of Directors or committee position within the Club for one full year"*. We would have a vote to change Section 5 to read: *"A nominee for the position of President must have **been an active Club member for a minimum of three years**"*.

The September tour is in final preparations and should be a go if wildfires and COVID do not get in the way.

Stay safe,

Jerry

*"Efforts and courage are not enough without purpose and direction."  
- John F. Kennedy*

Articles and contributions are encouraged and may be used as space permits. The deadline for all articles is the 20th of the preceding month. The Volcano View is a monthly publication of the Volcano A's Chapter - MAFCA E-mail all proposed articles to: [rrusunen@comcast.net](mailto:rrusunen@comcast.net)

## **2021 Board of Directors**

### **President:**

Jerry Lane - 360-263-6980  
[northforkmuseum@gmail.com](mailto:northforkmuseum@gmail.com)

### **Vice President:**

Corley Wooldridge 360-567-6349  
[Corley@corleyw.com](mailto:Corley@corleyw.com)

### **Treasurer:**

Linda Willey - 360 687-0916  
[lindawilley@mac.com](mailto:lindawilley@mac.com)

### **Secretary:**

Sherry Rusunen - 360-828-5317  
[rrusunen@comcast.net](mailto:rrusunen@comcast.net)

### **Member at Large:**

Austin Alling - 360-901-5998  
[Austin.Alling@icloud.com](mailto:Austin.Alling@icloud.com)

### **Past President:**

Jack Dusenberry - 360-256-0149  
[jdusie@comcast.net](mailto:jdusie@comcast.net)

### **Editor/Webmaster:**

Bob Rusunen - 360-828-5317  
[rrusunen@comcast.net](mailto:rrusunen@comcast.net)

## **Committee Chairs**

**Community Service:** Joyce Swartz

**Garage Workshop:** Tom Pagel

**NW Regional Rep:** Roger Green

**Public Relations:** Dian Lane

**Refreshments Coordinator:** Nancy Wooldridge

**Sunshine:** Karen Huset

**Tour Director:** Corley Wooldridge

## **Model TT Ford Dump Truck**



### **Lava Ladies**

*On June 26<sup>th</sup> we had our first outing in a long, long time and it was one of the hottest days we've had this summer but of course that didn't stop us from having a good time!! We went to Kalama and the first shop we visited was having a big sale and was handing out goody bags and offering refreshments, the shop was much bigger than expected, it was delightful. Lunch at the Lucky Dragon was next, that was worth the trip alone – great food and even better company. Next door to the restaurant was another shop and more items to check out before heading home – thank goodness for air-conditioned cars!*

*Looking forward to more outings, hopefully at our August Club meeting we can get together and plan for something soon!*

### **Volcano A's General Membership Meeting Minutes** **July 12, 2021**

**CALL TO ORDER:** Jerry Lane called the meeting to order at 6:15pm.

**TREASURER:** Linda Willey gave the financial report.

**TOURS:** Corley Wooldridge stated that the May Tour to the railroad sponsored by the Kelly's and the June Tour to the Tri-Cities sponsored by the Blick's were huge successes!! Upcoming tours are July 24<sup>th</sup> or 31<sup>st</sup> (Stay tuned as to the date due to weather) a scavenger hunt (bring a camera); Aug. 9<sup>th</sup> is the Potluck supper at Lanes; and Sept 20<sup>th</sup>-24<sup>th</sup> is the Presidents Tour. Looking for Bruno!!!

**EDITOR/WEBMASTER:** No report.

**COMMUNITY SERVICE:** Joyce Swartz reported we collected 853 #'s of food for the Food Bank since the first of the year!!

**REFRESHMENTS:** Nancy Wooldridge will have a list ready in Aug. for signups to do refreshments for upcoming meetings.

**LAVA LADIES:** Karen Huset will investigate having a Babies in Need "Shower" sometime in the Fall.

**OLD BUSINESS:** The minutes from the last meeting were approved and seconded as written by Roger Green and Bob Rusunen respectively. The Nazarene Church has agreed to allowing us to start our monthly meetings in the church hall in Sept. The meeting is the 2<sup>nd</sup> Monday of the month at 7pm.

**NEW BUSINESS:** The Presidents Tour is Sept. 20-24<sup>th</sup>. We will be going to Aberdeen, Forks, Sequim, and Elma. Reservations can now be made at the hotels. See the date chart and hotel info within the newsletter. Make those reservations!!!!

**ADJOURNED:** Meeting was adjourned by Jerry Lane.

Submitted by Sherry Rusunen

## 1920's Ladies Fashion

Dresses that will WASH AND WEAR—Made for Juniors, Misses and Small Women

**MODISH DRESSES**  
Stylish in the  
"NEW YORK MANNER"

**HOW TO ORDER DRESSES FOR JUNIORS AND MISSSES AND SMALL WOMEN**

Misses' Sizes  
Age Bust Length  
14 34 33  
16 36 34  
18 38 35  
20 40 36

Juniors' Sizes  
Age Bust Length  
12 30 32  
14 32 33  
16 34 34  
18 36 35  
20 38 36

**ORDER BY AGE:**  
and give bust  
measurements: height,  
weight, waist, collar  
desired. Measure  
length from waist  
line.

6200 Novelty  
Two-tone  
Kallie, Colors  
French, Coral or  
Landscape. A good  
quality individual  
nature. Buttons in  
two-tone effect as  
used for this two-  
tone model and as  
an accent to the  
self that is a  
little interesting. The  
slip, with a lace  
and a lace band  
at the knee line  
also, is a  
little  
interesting.  
6201 Imported  
Gingham, Colors: Red, Brown or Green.  
It is a  
little  
interesting.  
6202 Hemstitched  
LINENE  
\$3.98  
6201 Lonsdale Jean  
or Khaki Twill  
\$1.98  
6203 Two-Tone  
SATINE  
\$3.98  
6200 Checked  
CLOTH  
\$2.98  
6204 Imported  
Gingham  
\$2.98

Other Misses' Dresses on pages 40 to 521

THE HAMILTON GARMENT CO.

Source: Vintagedancer.com/1920's

## 1928-1931 Men's Fashion



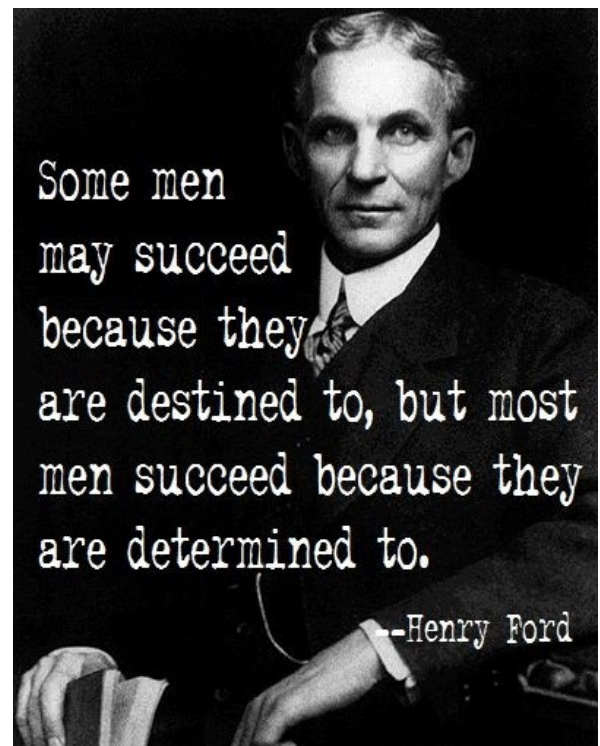
Source: Vintagedancer.Ccm/1920's

**Happy Anniversary**

1 Scott & Angela Parrish  
16 Frank & Roberta Emerick  
29 Richard & Joanna Simpson

**HAPPY BIRTHDAY**

8 Gordon Cook  
14 Darrell Freimuth  
16 Connie Salzman  
31 John Carlile  
31 Marjorie Pargeter





Credit goes to Steve Organ for submitting this Ford sticker that was affixed on new Model A windshields at the dealership:

Form M27  
10894 - 7-10-29

## NEW CAR DIRECTIONS

**SPEED** Avoid high speeds while the car is new. To obtain best results, IT SHOULD NOT BE DRIVEN FASTER THAN 30 TO 35 MILES PER HOUR FOR THE FIRST 500 MILES.

**OIL** Keep the oil at "F" on the measuring rod, especially during the first few hundred miles. Never let it get below the mark "L." Remove measuring rod and wipe with a dry cloth before testing the level. OIL SHOULD BE CHANGED AFTER THE FIRST 500 MILES AND EVERY 500 MILES THEREAFTER. Summer oil should conform to S.A.E. specification 40, and Winter oil to S.A.E. specification 20.

**BRAKES** this car is equipped with 4-wheel mechanical brakes which are quick and positive in action. Keep the car under control at all times to avoid the necessity for sudden application of brakes which might result in discomfort to passengers or collision from rear.

**FAN BELT** Do not tighten fan belt. The V-type fan belt does not require tight adjustment for proper operation. Too tight an adjustment will result in excessive wear on fan belt and generator bearings, particularly at higher speeds.

**TIRES** For easy riding qualities, proper braking and long life keep the tires, both front and rear, inflated to 35 pounds. (4.75-21 tires should be inflated to 40 pounds).

**INSPECTION** To insure best results have an Authorized FORD DEALER inspect this car and make necessary minor adjustments after the first five hundred miles of running.

**TRIPLEX SAFETY GLASS** Tripdex Safety Glass is used in this car for your protection. Do not replace Tripdex Safety Glass with plate glass. If replacement is necessary use TRIPLEX SAFETY GLASS.

**DRIVE SAFELY**

- July 10, 1929 -

## Annual Model A Day

# Swap Meet

## Fashion, Seminars, Food and Fun!

September 17th & 18th 2021 9-5pm

**The Gilmore Car Museum**  
6865 W. Hickory Road  
Hickory Corners, MI 49060

**SAVE THE DATE**

For more Info 269-615-3719 Jerry Morrissey  
For Seminar Information Ken Ehrenhofer 630-697-3906  
For Swap Reservations Mark Maron 847-302-7900



The Model A Ford Foundation

Model A Day 2021 is fast approaching-September 18th!

Every year in conjunction with Model A Day, MAFFI has a Swap Meet on Saturday and MAFFI has a booth with all the proceeds go to the foundation. If you are driving to the event this year, and your club would like to donate a Model A part for our booth, please contact Greg Fish ([fish\\_49202@yahoo.com](mailto:fish_49202@yahoo.com)) and let him know. This year's Swap Meet is looking to be one of our biggest and best yet!

The old saying goes, "Many hands make light work" and nothing could be truer than at Model A Day. We could use a few volunteers to help at several areas throughout the day on Friday and Saturday. It could be something as simple as selling tickets for a seminar, working a shift at the front gate, helping park cars and so many more.

Any questions regarding the Swap Meet or for volunteers, contact:

Mark Maron ([markmaron@gmail.com](mailto:markmaron@gmail.com))

Stay tuned for next month when we will be able to announce the many seminars that will be available for you to attend.

The Trustees are looking forward to meeting each and every one of you this year and are proud to showcase our beautiful museum with our First Responder's Display.

This "MAFFI Liaison Letter" was sent to you as your club's MAFFI Liaison. It is our hope that you will share it at your club's monthly meeting. If you are no longer the MAFFI Liaison for your club, please notify me at the email listed below with the name and email address of the new Liaison.

Thank you,

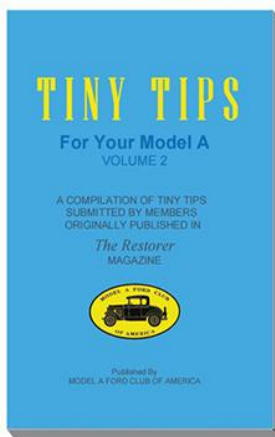
Marsha Quesnel, MAFFI Trustee

[clubcontact@maffi.org](mailto:clubcontact@maffi.org)

## New and Now Available

A Great Read Full of Fun Ideas

A Valuable Resource with Lots of Help



Order your copy of Tiny Tips Volume2 for only \$15.95 plus shipping and handling. Call 562-697-2712 for your copy today.

Check out the MAFCA Website!

[www.mafca.com](http://www.mafca.com)





**June 12-17  
2022**

*No Place Offers The Model A  
Experience Like The  
Texas Hill Country*

**MAFCA NATIONAL CONVENTION**  
YO RANCH RESORT • KERRVILLE, TEXAS

From its spectacular scenery to its beautiful two-lane country roads,  
here you will experience our hobby the way it is meant to be  
at the 31st National MAFCA Convention!



FIND CONVENTION INFORMATION ONLINE AT: [WWW.mafca.com](http://WWW.mafca.com)

Some of the week's highlights:

- San Antonio's Famous River Walk
- The Alamo - Birthplace of Texas
- Great Sightseeing & Restaurants!
- Fine Point Vehicle Judging
- Era Fashions & Judging
- Restorers Class




**Jim's Tech Tip**  
by Jim Cannon

**Working Around Your Car's Battery**

Whenever working on the electrical parts of your car, it is a good idea to de-energize everything to prevent an accidental short circuit. For example, one of the horn wires in "hot" all the time, so any time you do anything with the horn cover, it's a good idea to disconnect the battery. The same is true of the brake light switch and the wires inside the instrument panel in the car.

If you have a fuse on the yellow wire that comes off of the starter switch, just removing the fuse will do the trick. Or if you have a battery cut-off switch on the car, that will kill the power to everything.

But in many cases you need to disconnect the ground strap from the battery in order to make sure everything is without power. Perhaps you need to remove the starter cable, or the battery itself. Whenever you remove cables from the battery posts, it is a really good idea to cover the battery post with something to prevent accidental contact between it and the other battery post.

For example, if you dropped a wrench or other tool while working around or above the battery, it could land on top of the battery touching both posts. This will short out the battery, which can be a really big problem, resulting in a fire or perhaps the battery exploding acid all over.

When you buy a new battery for most cars today, they are sold with one or two small plastic caps over the battery posts. I see them in red and black plastic. If you go to your local auto parts store, the people there may even give you a few of these caps, if you ask.



I keep several of them in my box of battery-related tools and things, to put over the posts of any battery I am working around. It is easy to do and only takes a minute.

Take a minute to be safe. Enjoy! And Have a Model A Day! Jim

**RE-GROOVE YOUR  
SMOOTH TYRES**

Smooth tyres are illegal. With this simple British-made tool you can re-groove them almost like new in a few minutes to any pattern. No injury to tyres, less likelihood of punctures. 5,000 safe miles added to tyre life. Quick. Easy. A boy can re-groove perfect run-sheds at first attempt. Ask your dealer, or send 4/9 (post free).

**D.D. TYRE GROOVER**  
(Wide Groover Adapter—can groove 1/2 in. wide—and D wide cutters 2/- each).



WITH THREE  
EXTRA CUTTERS

**4/6**

D.D. DISTRIBUTORS, 58, NEW OXFORD ST., W.C.1.



**Safe-  
BEHIND TRIPLEX**

Pre-Model A early cars had plate glass windshields and windows. In a collision, the glass broke into sharp, dagger-like pieces that could injure or kill motorists. In 1926, Stutz embedded horizontal wires in its windshields to minimize shattering. Another safety feature of the 1926 Stutz was its low center of gravity, which reduced sway and rollover. Heavy steel running boards were designed to provide side-impact protection. The company advertised the Safety Stutz, but at \$2,995 it was too expensive for most Americans.

A more effective solution to the problem of shattered windshields was a "sandwich" of glass and celluloid that held fragments together on impact. Triplex Glass was standard equipment on the 1928 Ford Model A windshield and attracted attention because it was mass-marketed on a low-priced car.

In late November 1927 came the announcement that Americans had been waiting for: on December 2, 1927, the still-unnamed Ford automobile would be shown to the public, at locations revealed to each and every Ford dealer. Pricing was announced on December 1, the eve of the showing, and to the delight of potential buyers, the new Model A would be priced comparably to the Model T. On the day of the car's reveal, *Ford News* claimed that 10,534,992 people came to see the Model A, a number that represented 10 percent of the U.S. population at the time.

Brochure for Triplex shatterproof glass, which was standard equipment on Ford Model A windshields beginning in 1928.

The Model A offered buyers elegant styling (described as a "downsized Lincoln" by some), four-wheel brakes, improved fuel economy, a laminated safety glass windshield, hydraulic shock absorbers, and a 200.5-cu.in. four-cylinder engine rated at 40 horsepower, enough to deliver a top speed of 65 MPH. Seven body types were offered at launch, including Sport Coupe, Coupe, Roadster, Phaeton, Tudor sedan, Fordor sedan, and truck, and buyers could choose from four colors (Niagara Blue, Arabian Sand, Dawn Gray and Gun Metal Blue).



Examples of several Triplex trademarks etched on Model A windshields - Model A Judging Standards and Restoration Guidelines

Please join us on the  
President's Tour September 20 – 24, 2021

Here's the info on our hotel stays and I recommend that you make  
your reservations as soon as possible.

Monday, September 20<sup>th</sup>

Best Western Plus Aberdeen  
701 E Heron St Aberdeen  
Call Jackie @ 360 537-7460  
DBL queen is 125.99 King is \$121.49

Tuesday, September 21<sup>st</sup>

Forks Motel  
351 S. Forks Ave Forks  
Call 360 374-6243 🍷 King is 128.51 ~~Db~~ queen is 128.51

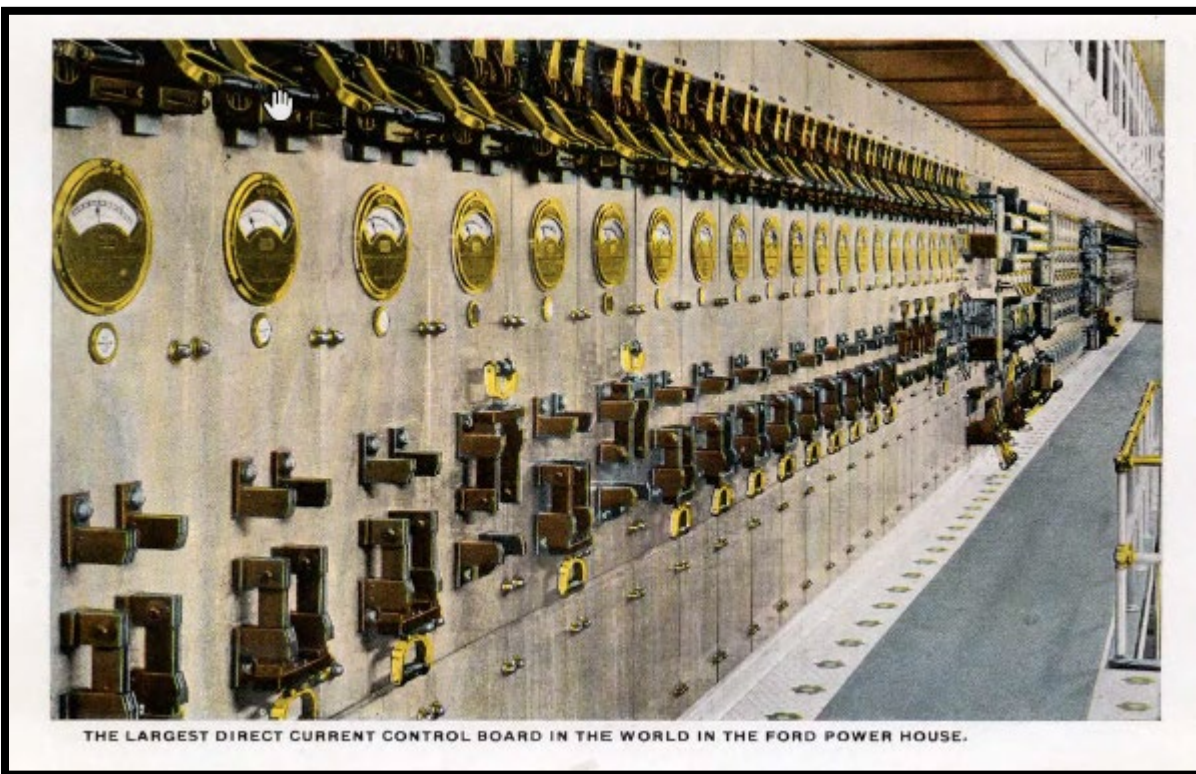
Wednesday, September 22<sup>nd</sup>

Sequim Bay Lodge  
26855 US-101 Sequim  
360 683-0691 ask for Peter \$129

Thursday, September 23<sup>rd</sup>

Elma Stay Beyond  
800 E Main St Elma Call Beau at 360 482-6868  
Queen is \$109, ~~Q~~ Queen is \$129, Queen suite is \$139

*Ford Factory Postcard Photos*



## **MAFCA Information**

The **Model A Ford Club of America, Inc. (MAFCA)** is a California non-profit corporation and a national historical society dedicated to the restoration and preservation of Model A Ford vehicles as manufactured from 1928 through 1931. MAFCA's members are dedicated to the restoration, preservation, and enjoyment of Ford vehicles of that era. MAFCA is the largest club in the world dedicated to one make of automobile. Volcano A members are urged to join the Model A Ford Club of America, Inc. Visit the MAFCA website for a membership application. Dues are \$50 yearly and include a subscription to **The Restorer.**



250 SO. CYPRESS • LA HABRA, CALIFORNIA 90631-5586  
562/697-2712 • 562/697-2737 • FAX 562/690-7452

### **Chapter Chatter**

**August 2021**

The MAFCA 2021 National Tour, A White Mountain Adventure, is concluded and besides the enjoyment of a great tour, I marked off two of the four remaining states I haven't visited bringing my total to 48 of the 50 states. New Hampshire and Maine were absolutely beautiful. If you were not able to attend you missed a well-run, well organized tour. For the most part, the weather was great and the cooler temperatures were a welcome relief from my typical hot Texas weather. Elaine and I got to visit with old friends, reacquaint with people we've met on past tours and make some new friends. Because of COVID restrictions and concerns, much time was spent outside in the parking lot with our cars which made a great venue for making new friends and seeing all the wonderful cars attending. Of special note to me were the six sedan deliveries present. If these are not rare enough, also



attending was an ultra-rare "drop bottom" sedan delivery. I was told by several that this is a one of eighty four vehicle. Incredible to see her still on the road.

As we move into the second half of the year, it's time to get those fall tours planned, ice cream socials and International Model A day activities on paper. Our club, the Piney Wood A's is working on all three along with our Christmas Banquet/Dinner. If you live in an area where this is possible now is the time to make final plans. December will be here before you know it.

Robert

2021 Chapter Coordinator

# Can You Find All Ten Things That Are Different?



Model A Fun

Answers: Power pole is missing: White lane lines missing in background: Coupe's license is missing: "Original" missing from sign board: Trash can is missing: Coupe is missing: Back sign board has ad missing: Lane line between cars missing: Coupe's spare tire is gone: Brown area in grass at curve gone.

# Never Leave Home Without Them

By Diann Eason, Era Fashion Committee Chairperson

Gloves were considered an important article of coordinated apparel for a lady of the Model A era. Gloves were bought, made, and worn for most activities outside the home. Fashion enthusiasts have looked for the three gores stitched or applied across the back of the hand to determine the originality of a pair of gloves. The MAFCA Fashion Guidelines, 2015 edition, section 3C-1 page 27 documents the characteristics of original women's gloves. The gores were thought to be present in daytime, afternoon, evening, and even formal gloves, 1928 through 1931.

The MAFCA Era Fashion Committee was presented with documentation; *Style Source* catalog dated 1930 with pictures and description of late afternoon and evening gloves that did not have the stitched gores. The second pair of gloves from the bottom of the page do not have the gores across the back of the hand. There are three stripes close to the cuff line of the glove.



## Painting Wheels

Submitted by Gene R. Bessie



If you are painting your wheels and don't want to remove and reinstall the tires, here's a tip for masking the tires. • deflate the tube • break the tire heads from the wheels • cut a "donut" from a sheet of heavy-duty plastic. The center of the donut is an 18" diameter circle and the outside of the donut is 32" for 19" wheels). For 21" wheels, add 2 inches to these dimensions.

Stretch the donut over the wheel allowing the plastic to drop down into the drop center of the wheel. The donut will cover the tire and can be taped in place with masking tape. • Now, do the same thing with another plastic donut on the other side of the wheel.

ONE CAUTION: don't use the plastic donuts for priming and then for color-coat painting (paint peels easily from the plastic and flaked paint will mess up your job). Make donuts for each paint procedure.

**PREVENTING PAINT POPPING** If you have trouble with freshly painted wheels "popping the paint" when the lug nuts are tightened, "mask" the holes in the wheels with a set of lug nut spacers held in place with small strips of body caulking material. After the paint job, these spacers can be carefully removed. A light coating of lubricant on the tapered part of the lug nut will help prevent "popping the paint."

*As found in "The Tole Pipe" the official newsletter of the Tyler Model A Ford Club, Tyler Texas*

**MAFFI Newsletter Minute**  
**July 2021**

**Model A Day 2021 is fast approaching-September 18<sup>th</sup>!**

Every year in conjunction with Model A Day, MAFFI has a Swap Meet on Saturday and MAFFI has a booth with all the proceeds go to the foundation. If you are driving to the event this year, and your club would like to donate a Model A part for our booth, please contact Greg Fish ([fish\\_49202@yahoo.com](mailto:fish_49202@yahoo.com)) and let him know. This year's Swap Meet is looking to be one of our biggest and best yet!

The old saying goes, "Many hands make light work" and nothing could be truer than at Model A Day. We could use a few volunteers to help at several areas throughout the day on Friday and Saturday. It could be something as simple as selling tickets for a seminar, working a shift at the front gate, helping park cars and so many more.

Any questions regarding the Swap Meet or for volunteers, contact:

Mark Maron ([markmaron@gmail.com](mailto:markmaron@gmail.com))

Stay tuned for next month when we will be able to announce the many seminars that will be available for you to attend.

## If Brake Rods Rattle—Try This

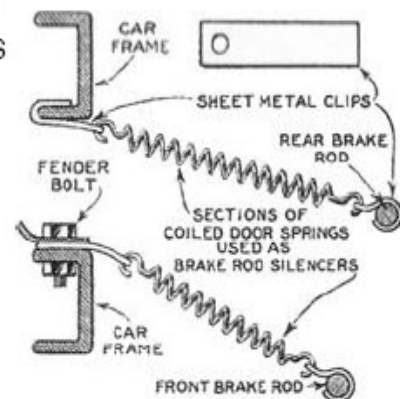
With the four-wheel brake system, the additional brake rods produce more than usual noises, especially after the links and supports are worn enough to rattle.

Silencing of brake rods is possible through use of coiled springs fastened jointly to the rods and car frames.

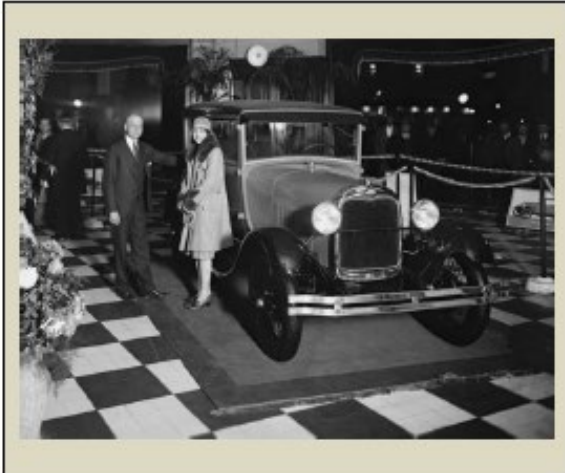
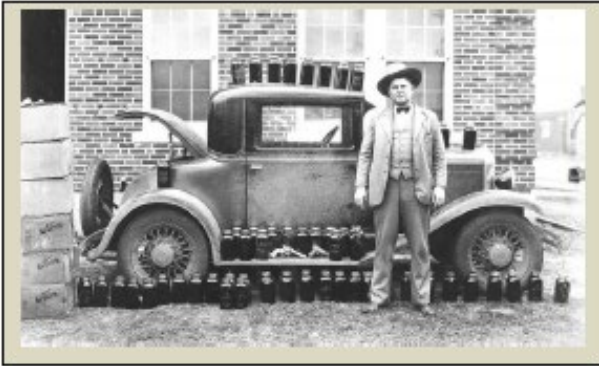
Springs such as these are used for screen doors are serviceable and cheap. Sections of these attached by pieces of sheet iron, cut off, punched and bent to form hooks, make effective silencers.

Two will be required for the emergency brake rods, two for the foot front brake rods and two for the foot rear brake rods.

*Science and Invention*  
May, 1930



### *Model A's in the 1930's*



Reprint from the Sullivan Trail A's News – March 2021 Issue

---

At my age "Getting lucky" means walking into a room and remembering what I came in there for.

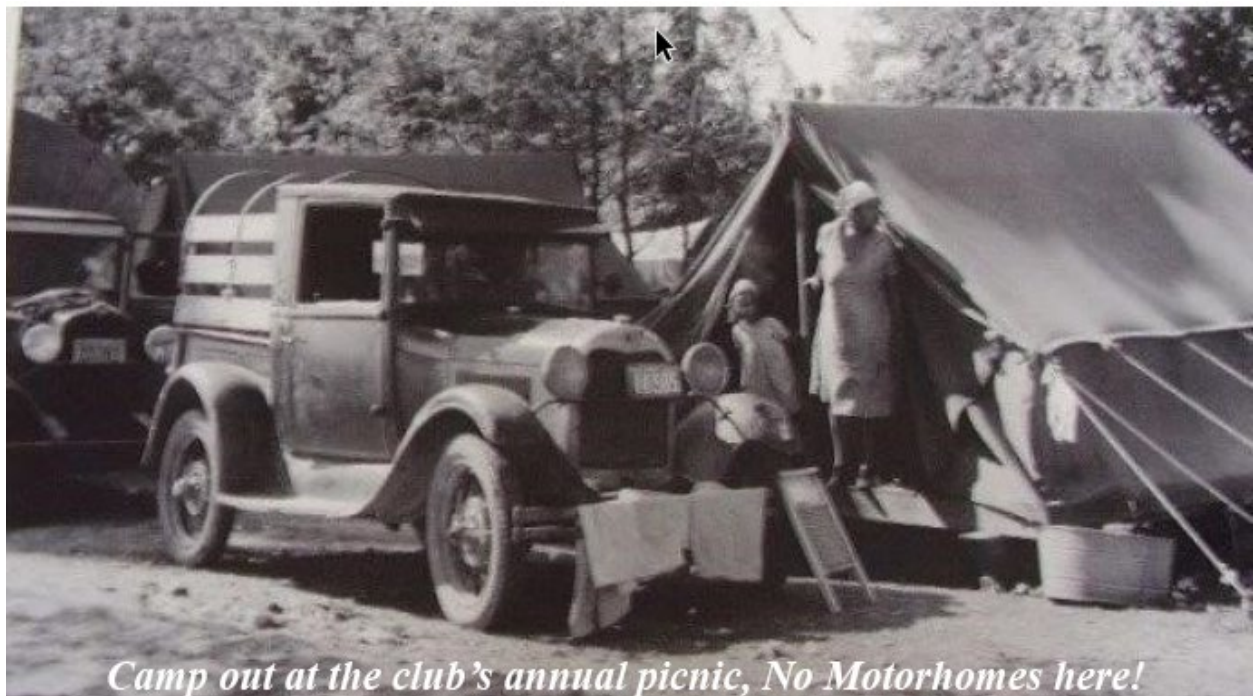
---

## *For Sale Items or Wanted*

To place an "Ad" send your information to [rusunen@comcast.net](mailto:rusunen@comcast.net), or call Bob Rusunen at 360-828-5317



### *1930 Ford Tudor Sedan – Culver City Police Patrol Car*

Made to look as a "BARN FIND" with Patina. Has a lot of up-grades and winnings at shows. Comes with show displays and dash plaques. Will need some repair, Asking \$12,500. Call for info. on build sheet 310-837-3026. Steve-N. Health forcing sale of car. Thanks!!



*Camp out at the club's annual picnic, No Motorhomes here!*

## Support Our Local 2021 Club Suppliers


**BECKER'S** LLC est. 1965  
 'T' and 'A'  Parts  
 P.O. Box 374 - Eagle Creek, OR 97022-0374  
 (503) 367-9676  
 beckersautoparts@yahoo.com

Benny Bennett Holly Bennett  
  
 4219 St. Johns Rd NE • Vancouver, WA 98661 • (360) 993-0284  
 www.bennyspizzacafe.com

  
 HOUSEHOLD • AUTOMOTIVE • CUSTOM  
  
 Mark Stillman 1501 NE 99th St.  
Vancouver, WA 98665  
(360) 573-7133  
 www.bobspaintland.com

**C'S AUTO MACHINE SHOP**

- FLYWHEEL GRINDING
- RESURFACING
- BORING
- THERMAL CLEANING
- ROD REBUILDING
- BLOCK DECKING

- VALVE GRINDING
- ENGINE REBUILDING
- KNURLING
- PIN FITTING
- PRESS WORK
- ROTORS & DRUMS

JIM  
**574-4934** EDM  
SPECIALISTS IN  
REMOVING BROKEN TAPS,  
DRILLS, STUDS & EASY-OUTS

OPEN M-F, 8 am-6 pm  
 800 NE 86th Street  
 Vancouver, WA 98665

We Save You Money www.CostLessAutoParts.net  
**Cost Less Auto Parts™**  
 "NO EXCUSES, Get it done!"  
  

**Orchards**  
 360-254-5710

**Hazel Dell**  
 360-695-4423

**Kelso**  
 360-353-5956


**HART RADIATOR**  
 Complete Radiator Service  
 501 Grade Street, Kelso  
 Fax 360-425-1189  
 Auto, Truck & Industrial  
 Radiators, Heaters, & Air Conditioners  
**360-425-6220**

Doug Hart  
 360-430-3615 Cell  
 doug@hartradiator.com

Allen Hart  
 360-430-9169 Cell  
 allen@hartradiator.com

WHOLESALE FLEET  
  
**KEN HEARD**  
 (360) 256-7985  
 (503) 252-5505  
 FAX (360) 256-7465  
 5913 NE 127TH AVE. #200  
 VANCOUVER, WA 98682

Amanda Utte  
 RustyLugParts.com  
**Rusty Lugs  
Rod's & A's**  
  
 Open: M-F 9am-5pm 8021 NE 142nd Ave  
Vancouver, WA 98682  
 Formerly:  
 Floyds Model A Parts p. 360-887-3346  
rustylugparts@gmail.com



