



www.volcanoas.net

Meeting: Church of the Nazarene - 16850 NE Fourth Plain Blvd, Vancouver, WA - Second Monday of Month - 7:00 PM
Guys breakfast meeting every Wed. (7:00am) at Hockinson Café, 219 NW 20th Ave, Suite 100, Battle Ground, WA
Guys lunch on Fridays (11:30 am) at Benny's Pizza & Café on 4219 St Johns Rd NE, Vancouver, WA

Volume 4 Issue 12

December

2015

2013 MAFCA Newsletter of the Year 2013 MAFCA Chapter Website of the Year

2015 Club Officers

President:

Jerry Lane - 360-263-6980
northforkmuseum@gmail.com

Vice President:

Lynn Mattingley - 503-753-1363
lynnmattingley@aol.com

Treasurer:

Linda Willey - 360 687-0916
lindawilley@mac.com

Secretary:

Sherry Rusunen - 360-828-5317
rrusunen@comcast.net

Member at Large:

Leonard Willey - 360-687-0916
lindawilley@mac.com

Past President:

Jack Dusenberry - 360-256-0149
j dusie@comcast.net

Editor/Webmaster:

Bob Rusunen - 360-828-5317
rrusunen@comcast.net

Articles and contributions are encouraged and may be used as space permits. The deadline for all articles is the 20th of the preceding month. The Volcano View is a monthly publication of the Volcano A's Chapter - MAFCA E-mail all proposed articles to: rrusunen@comcast.net.

Photo of Month

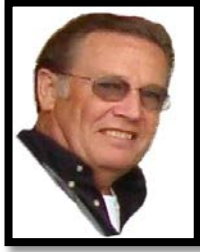


Model A Sedan Converted to Snow Duty

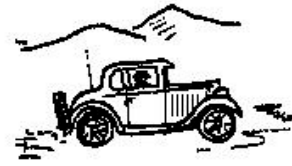
Annual Membership Dues

2016 Club Membership Dues are due on or before the January Club Meeting. Please make payment at the December meeting or send your check for \$20:

**Volcano A's
PO Box 970
La Center, WA 98629**



President's Note November 20, 2015



I wish everyone a Happy Thanksgiving, hard to believe it's already here.

Is everyone staying dry with the rain storms coming one after another, a big change from last year? I am ducking the rain trying to finish the landscaping at the Museum, just a few more dry days and the job will be finished.

Our next meeting is December 14th which is our annual Christmas Dinner and Gift Auction. This is a potluck dinner with the club furnishing the turkey, ham, mashed potatoes, punch and coffee. We will meet at 6:00 PM at the Lane's. After dinner we will hold our annual Christmas Gift Auction, which is our fund raiser for the year, so come out and enjoy a great evening.

Jerry

Committee Chairs

Community Service: Joyce Swartz/Tom Ryan

Garage Workshop: Tom Pagel

Library/Historian: Terry Findley

NW Regional Rep: Jack Dusenberry

Public Relations: Dian Lane

Refreshments Coordinator: Nancy Wooldridge

Sunshine: Pat Dusenberry

Tour Director: Lynn Mattingley

Merry Christmas Everyone



Front Page Photo

This 1929 Tudor Sedan has been converted with tracks and skis into a super snowmobile.

Volcano A's General Membership Meeting Minutes
November 9, 2015

CALL TO ORDER: 7:00 pm by President Jerry Lane.

GUEST: Guests were introduced; Tom & Linda Foster; Jerry & Carlene; George King.

TOURS: Vice-president Lynn Mattingley was absent. No tours for Dec.

TREASURER: Linda Willey gave the financial report.

EDITOR/WEBMASTER: Bob Rusunen asked for a volunteer to drive Paul Ocker's father in a coupe for his 75th birthday. Gary Schwartz volunteered!

COMMUNITY SERVICE: Joyce Schwartz announced that 114#s of food was collected for Oct. and then Tom Pagel handed in another slip for 465#s more of garden Produce bringing our year's total to 4484#s!! That is more than 2 tons!!!

SUNSHINE: Pat Dusenberry reported that flowers were taken to Tim Woodman following his back surgery.

LAVA LADIES: Dian Lane announced the Lava Ladies would meet after the meeting and choose pictures for the 2016 club calendar.

OLD BUSINESS: The minutes from Oct. were approved and seconded by Bill Peden and Gary Schwartz. The seminar for tonight is on spark plugs. Jerry said the Veteran's Day parade was great and well attended!

NEW BUSINESS: A notice was sent from Gordon Cook of Hood River announcing their International Days of 2016 in Hood River. More to follow.
Monday Dec. 14th is our club Christmas Potluck and Auction.
Annual club dues of \$20.00 are now due.
Elections followed as well as voting for Member of the Year; Mr. & Mrs. Model A; Hard Luck Award.

RAFFLE: Jerry Lane won \$40.00.

REFRESHMENTS: Cheese, fruit, & donut holes were served by Roberta Emerick, John Earnest, and assisted by Dian Lane.

ADJOURNED: Meeting was adjourned by Jerry Lane.

Submitted by Sherry Rusunen.

Happy Anniversary

- 27 Art & Marlynne Pugsley
- 29 Frank & Arnita Mayer
- 31 Lance & Andrea Lehman

Happy Birthday

- 2 Janet Hickel
- 2 Scott Deane
- 9 Shirley Weast
- 10 Terri Pitts
- 11. George King
- 12 Carl Bach
- 18 Jim Kelly
- 23 Bob Huset
- 24 Mike Grimm
- 27 Ron Hall
- 29 Marylan Kelly

Refreshments

December: Holiday Potluck Dinner and Auction at the Lane's

January: Marylan Kelly & Nancy Wooldridge

Remember; bring your gifts for the sponsored Christmas families to the Dec. 14th club Christmas party!! Be sure they are gift wrapped and labeled!!

Factory Foto of the Month



1931 - 160B Town Sedan

2016 Club Calendars

Volcano A's 2016 Calendar (for \$10.00) will be available at the December Meeting and Potluck Auction.



Articles and contributions are encouraged and may be used as space permits. The deadline for all articles is the 20th of the preceding month. The Volcano View is a monthly publication of the Volcano A's Chapter - MAFCA
E-mail all proposed articles to:
rrusunen@comcast.net.

Welcome New Members

Foster, Thomas & Linda

6802 NE 137th St
Vancouver, WA 98686

360-576-3810-Home

360-213-8280-Cell

T1foster@msn.com

1930 Coupe

King, George & Sue

9508 NE 56th Court

Vancouver, WA 98665

360-487-6718- George

360-487-6420-Sue

grgKng099@gmail.com

Member Update

Ginny Bay

415 SE 177th Ave, #137

Vancouver, WA 98683

360-828-8290

Future Events

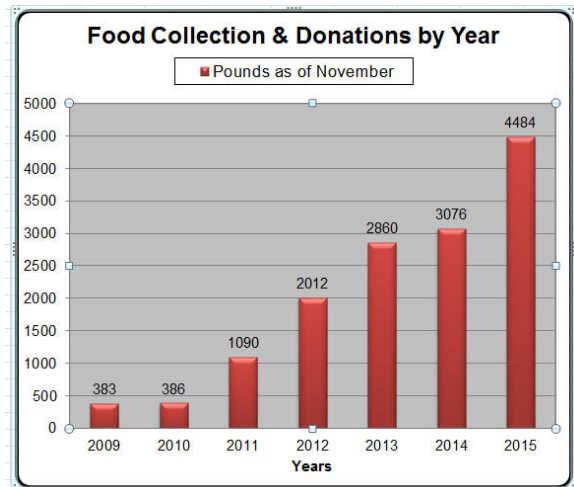
Dec 14 Club Christmas Dinner
and Auction, Lane's
Museum, La Center, WA

Trivia Knowledge Nugget

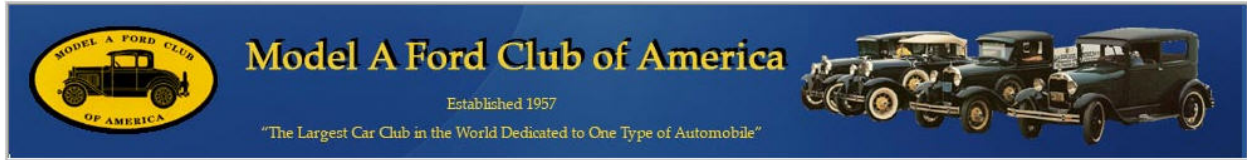
Bell Laboratories makes the first U.S.
public demonstration of color
television in New York; images are
roses and a U.S. flag.

Community Service

Joyce Schwartz announced that 114#s of food was collected for Oct. and then Tom Pagel handed in another slip for 465#s more of garden Produce bringing our year's total to 4484#s!! That is more than 2 tons!!!



Note: Periodically some materials printed in our newsletter may have been borrowed from other club newsletters. We thank other clubs for sharing their newsletters with the Volcano A's. Also, when sources are known they will be included.



Header from the MAFCA Website

MAFCA President's Page - Garth Shreading - November 2015



Another year is beginning to wind down, and the 2015 MAFCA election is over. I'm not sure if the number of ballots being cast this year was the highest in our history but it certainly was one the highest ever. Thank you for taking the time to cast your votes and I'm optimistic that those elected will chip in to make MAFCA better and stronger. The results were **Happy Begg, Doug Clayton, Bill Henderson and Alex Janke**. Congratulations all.

I'm pleased to announce that in 2015, we will be providing new MAFCA membership program meant to help support chapter growth. People never having been a MAFCA member before can buy the first year and receive the second year free. Keep an eye out in your chapter mail for information. Chapters are encouraged to pass the applications out your new members.

Your chapter should soon be receiving the annual renewal form. It is important that it be filled out and returned as soon as possible. While no fees are charged to be a MAFCA chapter, there is a late processing fee if not received returned by **February 28**. New this year is information required by our insurance carrier. We must know the total number of members in each chapter and how many are MAFCA members. Please take the time to accurately fill these important documents out.

Just in time for the holidays, MAFCA has a few new items available that make great gifts. **The Tudor book** is out and is ready to be shipped. We have a new Christmas card that can be ordered for the Holiday Season. We also have a limited supply of Model A themed coasters. Many of the scenic photos were taken along our National Tours. Check them out in the **November/December Restorer**.

| <u>Information</u> | <u>Future MAFCA Events</u> |
|---|---|
| <p>The Model A Ford Club of America, Inc. (MAFCA) is a California non-profit corporation and a national historical society dedicated to the restoration and preservation of Model A Ford vehicles as manufactured from 1928 through 1931. MAFCA's members are dedicated to the restoration, preservation, and enjoyment of Ford vehicles of that era. MAFCA is the largest club in the world dedicated to one make of automobile. Volcano A members are urged to join the Model A Ford Club of America, Inc. Visit the MAFCA website for a membership application. Dues are \$40 yearly and include a subscription to The Restorer.</p> | <p>MAFCA National Awards Banquet 2015 - Dec 2-5 - Medford, Oregon Hosts: Rogue Valley A's/Henry's Lady/Sis-Q A's 2016 - Dec 5-8 - Reno, Nevada Host: Sagebrush Chapter</p> <p>Northern California Regional Group Roundup 2016 - May 27-29 - Modesto, California Host: Modesto Area A's</p> <p>MAFCA National Convention 2016 - Jun 19-24, Loveland, Colorado Host: Model A Ford Club of Colorado</p> <p>MAFCA National Tour 2017 - Sep 10-17 - Pacific Northwest Tour Host: Lions Gate Model A Club</p> |

Model A ERA Clothing & Jewelry Fashions

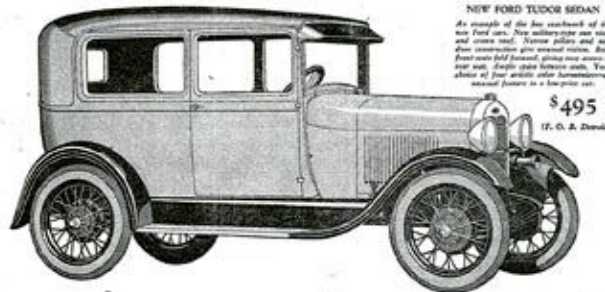


Source: Phillip Lensen at vintageadbrowser.com

Ford Advertisement

BOSTON EVENING TRANSCRIPT, THURSDAY, DECEMBER 1, 1927

FIVE



NEW FORD TUDOR SEDAN
As example of the low cost of the new Ford car. New safety-type car seat and steering coil. Narrow pillars and sun door construction give excellent vision. Both front seats half forward, giving easy access to rear seat. Hydraulic brake units. Your choice of four artistic color combinations—standard feature in a low price car.

\$495
 (F. O. B. Detroit)

First Pictures of the New Ford Car

Get complete details

TOMORROW at Ford salesrooms

FOR SEVERAL years we have been working on the new Ford car. For weeks and months you have been hearing rumors about it. For the past few days you have been reading some of the details of it in the newspapers.

Whatever you do tomorrow, take at least fifteen minutes to get the full story of this new automobile.

You will realize then that it is an entirely new and different Ford car, designed and created to meet modern conditions—a car that brings you more beauty, speed, quiet, comfort, safety, economy and stamina than you ever thought possible in a low-price car.

Automobile history will be made tomorrow, for the new Ford is not only new in appearance and performance . . . it is new in mechanical design. Many features of it are exclusive Ford developments. Some are wholly new in automobile practice. Its low price is a reflection of manufacturing improvements and economies that are as epoch-making as the car itself.

Nineteen years of experience in building 15,000,000 automobiles are behind the new Ford car and have counted in its making. Resources unmatched in the motor car industry are its heritage and its birthright.

The Ford policy of owning the source of raw materials, of making virtually every part, of doing business at a small profit per car, has cut many dollars off the price you would ordinarily have to pay for a car like this.

So wsey to you—learn about this new Ford car tomorrow. Compare it with any other car in the light-car field for beauty of line—for comfort—for speed

—for quick acceleration—for flexibility in traffic . . . for steadiness at all speeds . . . for power on the hills . . . for economy and low cost of up-keep . . . for its sturdy ability to stand up under countless thousands of miles of service.

Then you will know why tomorrow will be remembered as one of the greatest days in the entire history of the automobile industry. . . . Then you will know why the new Ford car will be *your* car.

NOTE THESE FEATURES

- Beautiful new low body lines*
- Choice of four colors*
- 55 to 65 miles an hour*
- Remarkable acceleration*
- 40 horse-power*
- Four-wheel brakes*
- Standard, selective gear shift*
- Hydraulic shock absorbers*
- 20 to 30 miles per gallon of gasoline*
- Theft-proof coincidental lock*
- Typical Ford economy and reliability*

STANDARD EQUIPMENT ON ALL NEW FORD CARS

- | | |
|-------------------------|---------------------------------|
| Starter | Dashlight |
| Five steel-spoke wheels | Mirror |
| Windshield wiper | Rear and stop light |
| Speedometer | Oil gauge |
| Gasoline gauge | Tools |
| | Pressure grease gun lubrication |

NEW FORDS SEDAN
A big name car. With such Chevrolet-type front and rear. Four convenient doors. Unusually large windows. High upholstery and well-protected hardware. Same light. Your choice of four artistic colors.

\$570
 (F. O. B. Detroit)



NEW FORD ROADSTER
A big name car. With such Chevrolet-type front and rear. Four convenient doors. Unusually large windows. High upholstery and well-protected hardware. Same light. Your choice of four artistic colors.

\$385
 (F. O. B. Detroit)



NEW FORD COUPE
There is a lot of the famous Ford in the new Ford Coupe. Handy package deal in back of seat and unusually large storage space in rear deck. Your choice of four artistic colors.

\$495
 (F. O. B. Detroit)



NEW FORD SPORT COUPE
Combines the alert appearance of the roadster and the advantage of a closed car. Handle bar standard. Locks more on rear quarter. Finished in four artistic color combinations.

\$550
 (F. O. B. Detroit)



NEW FORD DIAMON
Another big, low, racy car. All four doors open forward. Curved sides and floor with doors. Side console has unusually large windows. Your choice of four artistic colors.

\$395
 (F. O. B. Detroit)



FORD MOTOR COMPANY
 Detroit, Michigan

Technical Information

Ford Ignition and Cooling System

Dependable Ignition

Simple, reliable.

Exceptional timing system, easily set.

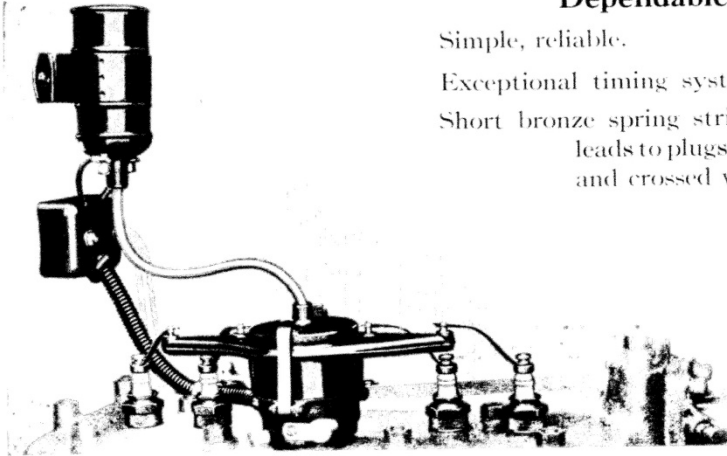
Short bronze spring strips form high tension leads to plugs and eliminate tangled and crossed wires.

Distributor conveniently located with parts readily accessible.

Specially designed coil.

Positive terminal grounded.

Theft-proof locking device.



Thermo Syphon and Pump Cooling System

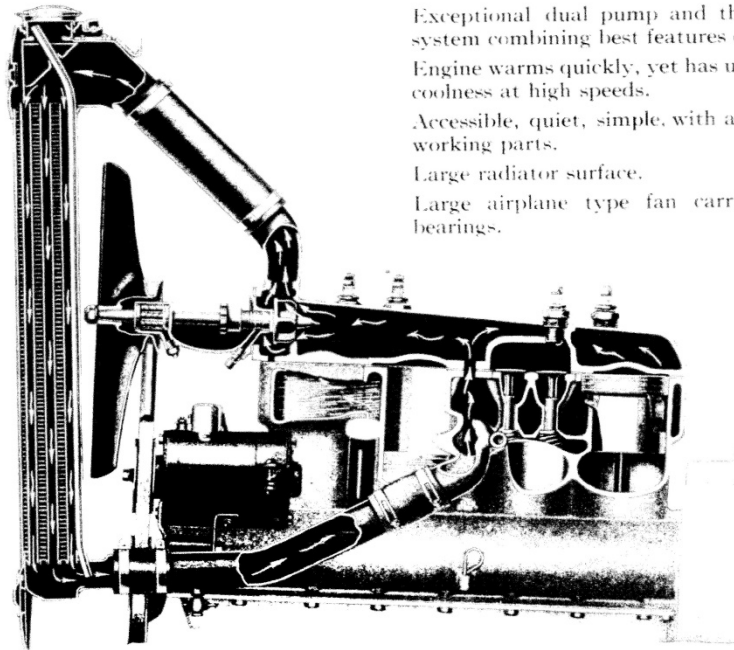
Exceptional dual pump and thermo-syphon system combining best features of both.

Engine warms quickly, yet has unprecedented coolness at high speeds.

Accessible, quiet, simple, with a minimum of working parts.

Large radiator surface.

Large airplane type fan carried on roller bearings.




2

FEATURES

Source: Fordex Data Manual

Just how many "Model A's" were made?

Model A Production started on Oct. 20th, 1927. By Feb. 4th, 1929 Model A No. 1,000,000 rolled off the production line. Final production ended on Aug. 31st, 1931 with only 4,320,446 Model A's built. Below are the total "Model A" Production Figures listed by year.
(Numbers aren't guaranteed to be correct)

| "Model-A" Domestic Production Figures | | | | | | |
|---|------|---------|---------|---------|---------|--------------|
|  | 1927 | 1928 | 1929 | 1930 | 1931 | Style Totals |
| Sport Coupe | 734 | 79,099 | 134,292 | 69,167 | 19,700 | 302,992 |
| Truck | 286 | 63,229 | 156,433 | 159,341 | 103,561 | 482,850 |
| Commercial Chassis | 99 | 42,612 | 130,608 | 56,707 | 34,959 | 264,986 |
| Phaeton | | | | | | |
| Standard | 221 | 47,255 | 49,818 | 16,479 | 4,076 | 117,849 |
| Deluxe | - | - | - | 3,946 | 2,229 | 6,175 |
| Roadster | | | | | | |
| Standard | 269 | 81,937 | 191,529 | 112,901 | 5,499 | 392,135 |
| Deluxe | - | - | - | 11,318 | 52,997 | 64,315 |
| Coupe | | | | | | |
| Standard | 629 | 70,784 | 178,982 | 226,027 | 79,816 | 556,238 |
| Deluxe | - | - | - | 28,937 | 23,067 | 52,004 |
| Tudor | | | | | | |
| Standard | 1948 | 208,562 | 523,922 | 376,271 | 148,425 | 1,259,128 |
| Deluxe | - | - | - | - | 21,984 | 21,984 |
| Town Car | - | 89 | 913 | 63 | - | 1,065 |
| Station Wagon | - | 5 | 4,954 | 3,510 | 2,848 | 11,317 |
| Taxicab | - | 264 | 4,576 | 10 | - | 4,850 |
| Fordor (2-window) | | | | | | |
| Standard | - | 82,349 | 146,097 | 5,279 | - | 233,725 |
| Deluxe | - | - | - | 12,854 | 3,251 | 16,105 |
| Business Coupe | - | 37,343 | 37,644 | - | - | 74,987 |
| Fordor (3-window) | | | | | | |
| Standard | - | - | 53,941 | 41,133 | 18,127 | 113,201 |
| Town Sedan | - | - | 84,970 | 104,935 | 55,469 | 245,374 |
| Convertible Cabriolet | - | - | 16,421 | 25,868 | 11,801 | 54,090 |
| Victoria | - | - | - | 6,306 | 33,906 | 40,212 |
| Convertible Sedan | - | - | - | - | 4,864 | 4,864 |

Source: Ahooga.com/info/product

A Great Depression Era Los Angeles, California Wrecking Yard



1932 was possibly one of the hardest years of the Great Depression. New automobile sales had dropped to a mere trickle of the figures established in the late-1920s, and a glut of used cars from the same period threatened new car sales. At the same time, there was money to be made by smart businesspeople with a large enough capital reserve, in the auto salvage and wrecking yard business.

Los Angeles and the area, in general, was an exuberant and free-wheeling metropolis during the 1920s that led up to “Black Tuesday,” the day the Stock Market crashed on Oct. 24, 1929. The years of booming economic prosperity left behind an overly large supply of used cars and “junkers.”

When new car sales died, dealers and sales organizations eventually banded together around the country to ease the problem by scrapping as many used cars as possible. Add to that people who were trying to make ends meet and sold their unwanted cars, “Junkies,” would also scavenge cities looking for unwanted or abandoned cars, and the desperate that had to sell their car to raise cash.

Source: The Old Motor.com

For Sale Items

To place an "Ad" send your information to [rrusunen@comcast.net](mailto:rurunen@comcast.net), or call Bob Rusunen at 360-828-5317

For Sale 1930 Ford Model A Pickup

Runs and drives, 5 new tires, powder coated wheels, new re-production steel box with Ford script on tail gate. Box needs to be painted and installed. Lots of new parts, new top installed, rebuilt carburetor and distributor. Clear Washington title. Over \$10,500 invested. Sale Price \$6,500

Contact: Kale Smith, Home: 360-686-3717 Cell: 360-901-2269

Gary Ellingson of Sunnyside, Washington is selling all of his surplus Model A & B parts. Call for appointment at 253-459-5871 or 509-837-3344. Please no more than 2 visitors at a time. See list of items below.

Model A Parts

| Quantity | Description | Price/ea | Comment |
|----------|---|---------------|-----------------|
| 10 | Bare engine blocks | \$10 | \$1,000 for all |
| 3 | Short blocks all run | \$150 | |
| 4 | Short blocks that run | \$200 | \$800 for all |
| 15 | Crank shafts | \$20 | \$300 for all |
| 5 | Brg cam shafts | \$30 | |
| 3 | Brg cam shafts | \$10 | |
| 20 | Water pumps | \$10 | \$150 for all |
| 10 | Fly wheel housings | \$20 | \$200 for all |
| 5 | Fly wheels | \$20 | \$100 for all |
| 15 | Used pressure plates | \$10 | \$150 for all |
| 15 | Restored 4 pc universal housing | \$10 | \$150 for all |
| 10 | Tork tubes | \$10 | \$100 for all |
| 6 PR | Rear axle housings w/good surfaces | \$40/PR | \$200 for all |
| 5 PR | Rear carrier halves | \$30 | \$150 for all |
| 15 | 4 pc good used sets of 3 way spider gears | \$40 | \$500 for all |
| 7 | Heads w/cracks | \$15 | \$100 for all |
| 6 | Front wishbones | \$20 | \$100 for all |
| 9 | Front axles | \$30 | \$250 for all |
| 12 | 18" good used tires | \$200 for all | |
| 17 | Oil pans | \$10 | \$150 for all |
| 13 | Oil trays | \$10 | |
| 10 | Upper water outlets | \$10 | \$100 for all |
| 15 | Lower water outlets | \$10 | \$150 for all |
| 10 | Exhaust manifolds | \$10 | \$100 for all |

Model B Parts

| Quantity | Description | Price | Comment |
|----------|--|----------|---------------|
| 1 | B block small grinding on #5 tappet hole | \$200 | |
| 2 | C cranks | \$500 | |
| 1 | B crank (std) | \$200 | |
| 1 | B front cover | \$30 | |
| 1 | C front cover | \$30 | |
| 4 | B Zenith Carbs | \$20 | \$60 for all |
| 15 | B rods | \$30 | \$400 for all |
| 3 | B Main caps sets | \$50/set | \$150 for all |
| 1 | B cam shafts | \$40 | |
| 1 | B oil pan | \$200 | |
| 1 | B oil tray | \$50 | |
| 2 | B Valve side covers | \$25 | \$50 for all |
| 1 | B fancy alum valve side cover w/fins | \$40 | |

Model A Pressure Plate (1928-34), brand new & never used. \$75.00.
 Contact: Bob Rusunen 360-828-5317 or rrusunen@comcast.net.

WINTER STARTS DECEMBER 21ST

Parts Wanted

1930-31 Left Front Fender with wheel well.
 Contact Pete Hazard - 360-225-7087 or jannymj885@msn.com

The Restorer (Nov-Dec Issue) - Letters to the Editor

I noticed the article on page 7 regarding the 7/16" 8-point socket no longer available at Sears. However, I have found the 7/16" 8-point socket from Proto Tools or via Grainger Industrial Supply for 3/8" and 1/2" drives. Here is the information:

Protol Tools (www.protolindustrial.com)
 8-point socket 3/8" drive - #J5214S 1/2" drive - #J5414S
 Grainger (www.grainger.com)
 8-point socket 3/8" drive - #1AK79 1/2" drive - #1AN69

Support Our Area Suppliers

C'S AUTO MACHINE SHOP

- FLYWHEEL GRINDING
- RESURFACING
- BORING
- THERMAL CLEANING
- ROD REBUILDING
- BLOCK DECKING
- VALVE GRINDING
- ENGINE REBUILDING
- KNURLING
- PIN FITTING
- PRESS WORK
- ROTORS & DRUMS

JIM
574-4934

EDM
SPECIALISTS IN
REMOVING BROKEN TAPS,
DRILLS, STUDS & EASY-OUTS

OPEN M-F, 8am-6pm
800 NE 86th Street
Vancouver, WA 98665

We Save You Money www.CostLessAutoParts.net

Cost Less Auto Parts™

"NO EXCUSES, Get it done!"

| | | |
|---------------------------------|-----------------------------------|------------------------------|
| Orchards 360-254-5710 | Hazel Dell 360-695-4423 | Kelso 360-353-5956 |
|---------------------------------|-----------------------------------|------------------------------|

HART RADIATOR

Complete Radiator Service

501 Grade Street, Kelso
Fax 360-425-1189

*Auto, Truck & Industrial
Radiators, Heaters, & Air Conditioners*

360-425-6220

Doug Hart
360-430-3615 Cell

Allen Hart
360-430-9169 Cell

Benny Bennett

Holly Bennett

Benny's
ROD & CUSTOM
Pizza-Cafe

4219 St. Johns Rd NE • Vancouver, WA 98661 • (360) 993-0284
www.bennyspizzacafe.com

Jenifer Scott

Assistant Manager

303 E 15th Street
Vancouver, WA 98663
Telephone 360.694.8584
Fax 360.694.8843
amr5167@fedex.com

Rusty Lugs
Rod's & A's

Open: M-F 9am-5pm

Formerly:
Floyds Model A Parts

Amanda Uthe
RustyLugParts.com

8021 NE 142nd Ave
Vancouver, WA 98682
p. 360-887-3346
rustylugparts@gmail.com



Volcano View Newsletter
Bob Rusunen, Editor/Webmaster
3720 NW 116th Street
Vancouver, WA 98685



Courtesy from MAFCA - "A" of the Day photos