



Volcano A's, PO Box 970, La Center, WA 98629

www.volcanoas.net

Meeting: Church of the Nazarene – 16850 NE Fourth Plain Blvd, Vancouver, WA - Second Monday of Month – 7:00 PM

Friday Lunch and Take-Out at Benny's Pizza & Café on 4219 St Johns Rd NE, Vancouver, WA

Volume 10 Issue 12

December

2021

2021, 2020, 2017 & 2015 MAFCA Newsletter Certificate of Merit
2018 – MAFCA Website of Distinction
2017 MAFCA Website Certificate of Merit
2013 MAFCA Newsletter of the Year 2015 & 2013 MAFCA Website of the Year



Happy Holidays





President's Note ***November 24, 2021***

As I write these notes memories of the last 22 years come to mind, especially the tours that took place in the Great Northwest, including

Canada, Washington, Oregon, and Idaho. These events would not have happened without our members stepping up and volunteering, I am thanking everyone for helping with these activities in the future, please help our club to survive by volunteering.

Our Christmas party meeting is coming up soon, on December 13th at 6:00 PM in La Center at the Lane's. The club will provide turkey, ham, mashed potatoes, and soft drinks so, please sign up for side dishes. Also, bring wrapped gifts to be auctioned off for our annual fund raising.

I believe in less politics and more fun.

Jerry

2022 CLUB OFFICER NOMINATIONS

President: Roger Green

Vice President: Gary Swartz

Treasurer: Leonard Willey

Secretary: Sherry Rusunen

Member at Large: Austin Alling

Articles and contributions are encouraged and may be used as space permits. The deadline for all articles is the 20th of the preceding month. The Volcano View is a monthly publication of the Volcano A's Chapter - MAFA E-mail all proposed articles to: rrusunen@comcast.net

Front Page Photo

Model A pickup out delivering Christmas Packages in the snow

2021 Board of Directors

President:

Jerry Lane - 360-263-6980

northforkmuseum@gmail.com

Vice President:

Corley Wooldridge 360-567-6349

Corley@corleyw.com

Treasurer:

Linda Willey – 360 687-0916

lindawilley@mac.com

Secretary:

Sherry Rusunen – 360-828-5317

rrusunen@comcast.net

Member at Large:

Austin Alling – 360-901-5998

Austin.Alling@icloud.com

Past President:

Jack Dusenberry - 360-256-0149

jduisie@comcast.net

Editor/Webmaster:

Bob Rusunen - 360-828-5317

rrusunen@comcast.net

Committee Chairs

Community Service: Joyce Swartz

Garage Workshop: Tom Pagel

NW Regional Rep: Roger Green

Public Relations: Dian Lane

Refreshments Coordinator: Nancy Wooldridge

Sunshine: Karen Huset

Tour Director: Corley Wooldridge

Remember

Holiday Potluck and Gift Auction at the Lane's Museum on Monday December 13th starting at 6:00 PM.

Volcano A's General Membership Meeting Minutes
November 8, 2021

CALL TO ORDER: Jerry Lane called the meeting to order at 7:00 pm.

TREASURER: Linda Willey gave the financial report.

TOURS: Corley and Nancy Wooldridge were not present, so no tour information.

EDITOR/WEBMASTER: Bob Rusunen announced 2022 club membership dues of \$20.00 are due now and need to be paid by the end of December, so the 2022 directory can be finalized and printed for distribution at the January meeting. The directory will not be mailed, so come to the January meeting so you get yours!!

COMMUNITY SERVICE: Joyce Swartz reported we collected 58#'s of food in Oct. She then reported that Tom Pagel donated 1271 #'s of food from his garden to the food bank in our club's name!! Thank you so much, Tom. Our total for the year is now 2411 #'s.

PUBLIC RELATIONS: Dian Lane reported that everything is fine. Remember Sweats for Vets.

LAVA LADIES: Karen Huset announced that Babies in Need sent a thank you note for our donation and a newsletter telling some wonderful stories about the women and babies they have helped.

OLD BUSINESS: The minutes from the last meeting were approved and seconded as written by Pete Hazard and Jesse Baker, respectively. Jerry Lane reported that the country ride and picnic were great. Enjoyed the tour immensely. Thank you, Jan, and Pete! It was then time for the elections for next year's board. Nominees were President: Roger Green & Corley Wooldridge; Vice President: Gary Swartz; Secretary: Sherry Rusunen; Treasurer: Leonard Willey; Member at Large: Austin Alling. Prior to the actual vote, Secretary, Sherry Rusunen read a letter from Corley Wooldridge stating that he wished to withdraw from the nomination of President and encouraged all to vote for Roger Green. Election results will be announced at the Christmas meeting and dinner. The Christmas dinner and Auction will be Monday December 13th at 6:00 at the Lane Museum.

NEW BUSINESS: It was discussed that a new PO box will be needed for the Clubs mail. Linda Willey and Roger Green will investigate the availability of a box in Battle Ground.

RAFFLE: Gary Swartz won \$34.50, and the club received \$34.50!!

REFRESHMENTS: Following the meeting, Carma and Karen Huset served refreshments!!

ADJOURNED: Meeting was adjourned by Jerry Lane.

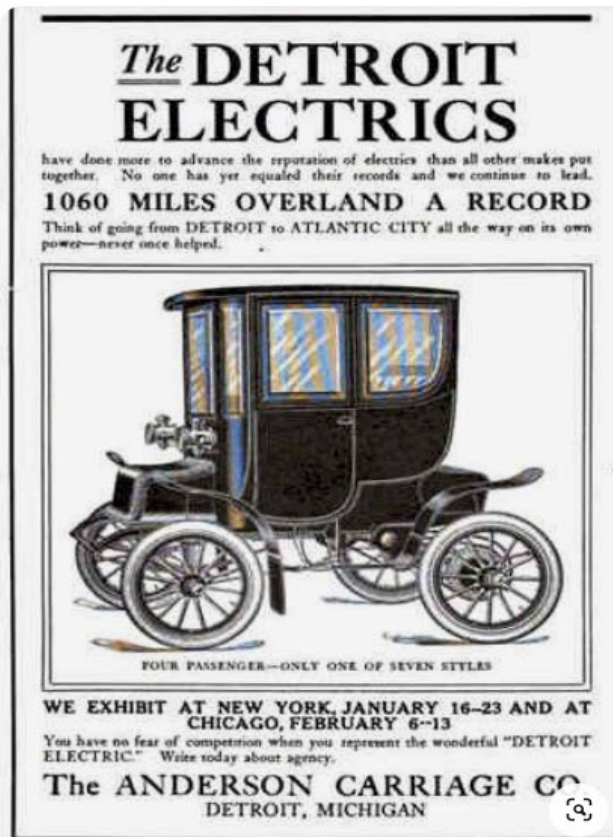
Submitted by Sherry Rusunen





Remember, 2022 Club Membership Dues are due no later than at the end of December or at the Club Meeting. If dues are not paid by then the member will not be included in the printed annual roster. Please make payment at the December meeting or send your check to:

Volcano A's,
PO Box 970,
La Center, WA 98629



Volcano View Newsletter
The December 2021 issue will be the last copy that will be sent out in printed copy via US Mail.

Celebrate these December Birthdays



Shirley Weast	9
Carl Bach	12
Linnette Jordan	13
Jim Kelly	18
Rick Boehm	20
Mike Grimm	24
Ron Hall	27
Marylan Kelly	29

Celebrate these December Anniversaries



Art & Marlynne Pugsley	27
Frank & Arnita Mayer	29



Rusty Chappell
10705 NE 142nd Ave.

503-317-8099
Rustard1963@AOL.com
1930 Coupe

A YEAR OF PROGRESS

Since December 1, 1924, nearly five-and-a-half million new Ford cars have been built. Production has gradually increased from a few hundred a day to more than four a day. We expect to make thousands more in 1926.

These are impressive figures. But they are only that. The big thing is that the new Ford has more than lived up to all expectations.

Our policy has always been to make the best automobile it is possible to make at a low price. Whether having it is the wisest state. The public expects us to keep it going. These objectives include good looks as well as good running.

The new Ford is built on sound principles. There is nothing of an experiment about it. Our whole office has been working complete—year gave you outstanding service with as little machinery as possible.

Take the motor. It has made a remarkable record because it combines every essential of good performance—power, acceleration, smoothness, speed—quietly, economy and

"The new Ford can outlast the best made of our experience in making 15,000,000 automobiles. We consider it our most important contribution to the progress and prosperity of the country, and to the daily welfare of millions of people."

Henry Ford

long life. And any other type of motor has better, we would have chosen that.

From every part of the world some reports of reliability. Many of the new Fords have been driven 100,000 miles in the past year. Some have that and more. There is no telling how far they will go. The average life of the Model T was seven years. We believe this new car will do even better. It is also

economical to operate and the cost of keeping it low.

The engine is the heart of the motor car, of course. The design we have chosen almost as important. For instance, the fully enclosed air-brake system of the new Ford, its remarkable smoothness, comfort and safety in all speeds. In many riding qualities. The beauty of its lines and colors.

In a word, the quality of the new Ford goes clear through. Nothing has been done to save the new Ford was a good car when it was first introduced. It is a better car today. Certainly we are building better ones of doing things. As soon as we see one of them we put them just the way. This distinction has been recognized by nearly everybody.

Our mission is to make the best automobile that can be made to sell at a low price. In our increasing demand, the new Ford is the expression of that ideal.

Ford Motor Company
Dearborn, Michigan

USA
1941
DECEMBER 7

PEARL HARBOR
REMEMBRANCE DAY

[illegible][illegible]



Model A Ford Club of America (MAFCA)
Dues are \$50 per year which includes a subscription to:
The Restorer magazine.

Send to: MAFCA
250 South Cypress Street
La Habra, CA 90631



Website: www.mafca.com

Model A Ford Foundation Inc (MAFFI)

Dues are \$25 per year which includes a
subscription to: *The Preserver Quarterly*
newsletter



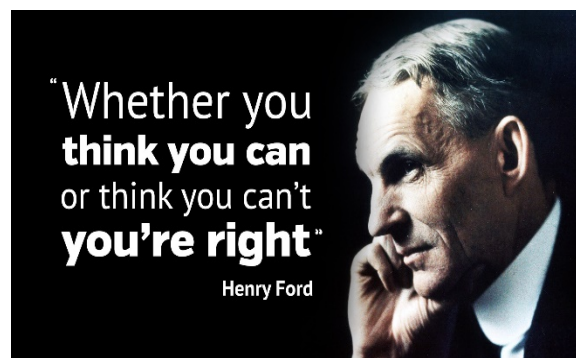
Send to: 28 Peotone, IL 60468-0028

Application is online @ **Website www.maffi.org**

www.mafca.com'. A small section on the left lists 'Some of the week's highlights: San Antonio's Famous River Walk, The Alamo - Birthplace of Texas, Great Sightseeing & Restaurants!'. On the right, it lists 'Fine Point Vehicle Judging, Era Fashions & Judging, Restorers Class'. The 'ALAMO A'S' logo is at the bottom right."/>

Check out the MAFCA Website!

www.mafca.com



This article comes from the
Ford News, December 8, 1927.

Stores Have Fine Candies

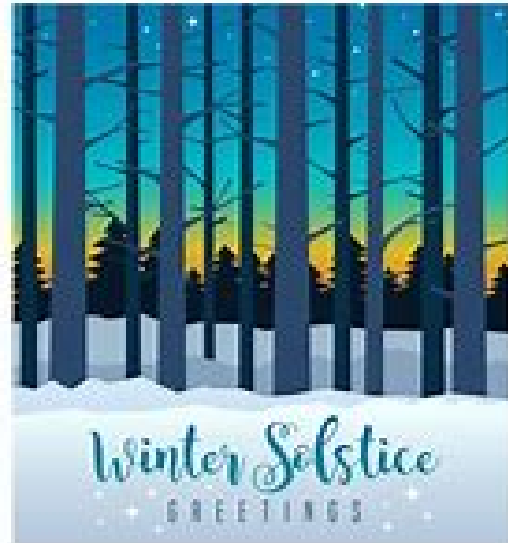
Christmas Stocks of Excellent Quality at Low Prices

The excellence and variety of the stocks of candies and nuts which have won the Ford commissaries an enviable reputation in years past will be equaled, perhaps surpassed, this season.

Among the fine items in the chocolate-covered line are the assorted fruits and nuts made by Weideman, at \$2.25 per box of five pounds, and the Aunt Molly assortment in one-, three-, and five-pound boxes, at .46, \$1.20, and \$1.95 respectively. Catawba assorted chocolates sell at \$1.45 per five-pound box.

The shining surface and rich, unusual filling of walnut chips and twigs make them favorites among many lovers of non-chocolate candies; the chips are \$1.25 per 2½ pound tin, the twigs \$1.35 per three-pound tin. Peanut brittle of the best quality is priced at .29 a pound, and glazed peanuts at .49 a pound. American mixed candy can be bought at two pounds for .25, an attractive confection known as plastic-filled can be bought at one pound for .25, .75 for a three-pound tin.

The stock of nuts includes filberts and Brazils at .24 per pound, almonds at .29, walnuts at .28, and mixed nuts at .25.



Reprint from: Script "SA" News Dec 2019

Ten Commandments for the Car Collector



1. Thou shalt not store thy cars out-of-doors, except for the wife's modern iron.
2. Thou shalt not covet thy neighbor's car, nor his garage, nor battery charger.
3. Thou shalt not love thy cars more than thy wife and children; as much, but not more.
4. Thou shalt not read thy "Restorer" on company time, lest thy employer make it impossible to continue thy car payments.
5. Thy shalt not despise thy neighbors Edsel, nor his DeSoto, nor even his Packard.
6. Thou shalt not allow thy daughters nor thy sons to get married during the holy days of the Old Car Swap Meets.
7. Thou shalt not deceive thy wife into thinking that thee is taking her for a romantic Sunday drive when, indeed, thou art going out to look at another Model A.
8. Thou shalt not tell thy spouse the entire cost of thy latest restoration,
At least not all at the same time.
9. Thou shalt not promise thy wife a new addition to the house and then use it to store cars;
Thou shalt not store Ford parts in the attic.
10. Thou shalt not buy thy wife a floor jack for her birthday.

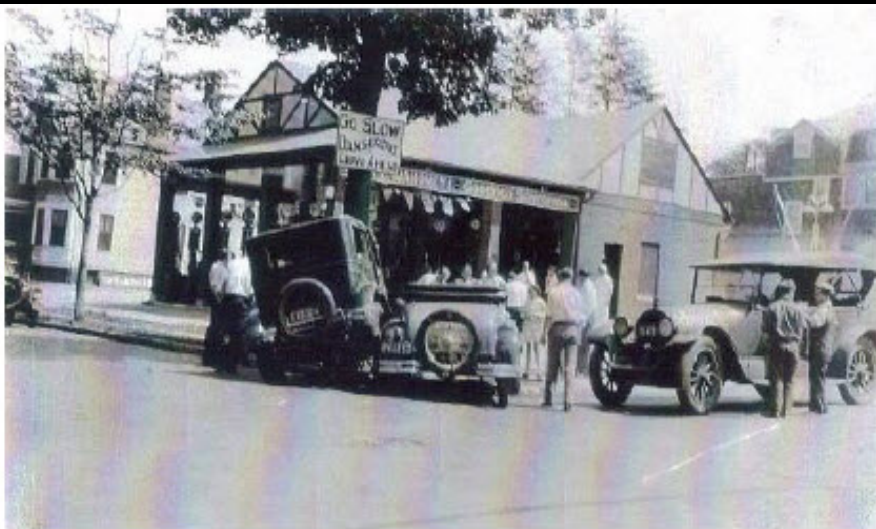


December 1, 1929 – Henry Ford institutes the \$7 day in an effort to aid his workers and fend off the effects of the Depression, but it is to no avail; between 1929 and 1932, Ford must lay off nearly half of his workforce.



Holiday Pictures for the Season





Looks like they were racing to get to the gas station first.



Notice sign - "Go Slow Dangerous Curve Ahead!"



Barb Christie sent this one in —



Two elderly members have worked on old cars together for many years and naturally they have gotten to know each other pretty well.

One day, while working, one guy suddenly looks up at the other and says, "I realize we've known each other for many years, but for the life of me, I just can't bring it to my mind...would you please tell me your name again?"

There was dead silence for a couple of minutes, then the other responds, "How soon do you need to know?"

Jabots and Bertha Collars Add Era Flair to Modern Dresses

By Laurie Elliott, Santa Clara Valley Chapter

When looking at women's afternoon and evening wear of the Model A era, you'll notice all sorts of drapes, flounces, ruffles, ties and streamers that you generally don't see in modern clothing. This can be a bit perplexing when trying to recreate an era look. How do you achieve this without the work of sewing an entire garment? Try adding a jabot or bertha collar to your modern dress.



Do you have a fancy handkerchief just sitting in a drawer? Can you cut out and machine stitch a modern capelet pattern? Then you're on your way all ready.

Using examples of era fashions and tips included in this article, you might be able to short cut your way to a standout dress for your next Model A afternoon tea or banquet.

Read the full article on the MAFCA website at: http://www.mafca.com/ef_articles.html

Not Just Any Boots!

By Sherry Wink

Sometimes it seems like the normal shoes for Model A fashion are just plain, boring pumps. Sometimes they are dressed up with a little trim and buckles, perhaps some pretty straps. That does describe the routing footwear of the era, but there are also a few surprises hiding in the old catalogs! Check out these boots that are all from original catalogs that I own. Those red 'whoopie booties' are the biggest surprise to me! Wow, just Wow!

The cuffed "Swanky Boots" are pretty interesting to look at too! And of course the lace up Parisian and Grecian boots are amazing to look at too! Model A era fashion doesn't always have to be straight-laced and plain!



Whoopee Boots
National Bellas Hess
Fall/Winter 1929/30



Swanky Boots Chicago



Parisian Boot
National Bellas Hess Fall/Winter
1929/30



Grecian Beauty Boots—Sears



Whoopee Booties -Sears 1929
Fall/Winter

Jim's Technical Tip

by Jim Cannon,

Ignition Cam Screws

I have helped a few Model A owners with an unusual problem: For no reason at all, their distributor goes "out of time". They lose power and have to limp home. They reset the timing and the car runs great again, but after a while the same thing happens and they limp home. Gremlins? No.

The problem is that the ignition cam screw may not hold the cam down tightly to the distributor shaft. After a bit of driving, the cam rotates into a more and more "retarded" position and the engine loses power.

In spite of getting out a big screw driver and tightening the screw as much as possible, the cam still moves on them. Why is this? The SCREW that they are using is too long for the hole that is drilled and tapped in the top of the distributor shaft.

Some reproduction screws are just too long. Or the hole in the reproduction distributor shaft is too shallow. Or both! Whatever the case, the screw bottoms out in the hole and jams up tight before the cam is properly locked down on the shaft. So the cam moves.

The simple fix is to add a washer under the head of the cam screw. Now the cam will get locked down well before the screw bottoms out in the hole. You also want to inspect the underside of the cam; it should have ridges that help lock it down on the shaft. Once the screw is tight, put the rotor on the cam and gently try to turn it on the distributor shaft. It should not move.

If you or a friend encounters this problem with the engine going out of time, I hope my little Tip does the trick for you.

Jim Cannon
Have a Model A Day

copywrite Frisco illustrationsOf.com/89401



Can You Find All Ten Things That Are Different?



Model A Fun for All



Answers

1. The Magazine for Model A Enthusiast is missing.
2. White wood trim "X" is missing.
3. Door handle missing.
4. Man's shoe is gray.
5. Green weeds added to right side.
6. Rumble seat step plate is missing.
7. Fence rail on left is missing.
8. Woman's wristwatch is missing.
9. Hub cap is missing.
10. White trim on left extended.



View of the Arlington Memorial Bridge from Arlington, VA, which crosses the Potomac River. The Lincoln Memorial is visible on the other side of the Bridge in Washington, DC.

1932: Motorists Jam the New Arlington Memorial Bridge

Arthur E. Scott took this image on January 17, 1932, when an estimated 100,000 motorists crossed the Bridge and toured the area. It was the day after President Herbert Hoover dedicated Memorial Ave. in Arlington, Virginia, the Memorial Bridge, and the grand entrance to Arlington National Cemetery in Washington, DC. The building partially visible on the other side of the structure is the Lincoln Memorial in Washington.

Construction of the Bridge began in 1926 and finished in 1931. The span was officially opened on May 6, 1932; it was designed by the architectural firm of McKim, Mead, and White.

[How many Model A's can you spot? In the foreground, on the left, is a car that could be a four-door 1930 CHEVROLET, but the running lights look too large. On the far right, approaching the bridge, is a substantial 1920s PACKARD.]

Source: [The Old Motor](#)





MAFCA President's November Note



Turkeys in our neighborhood are more cautious these days. They no longer stand in the middle of the road challenging drivers. Now they stand on the side of the roadway taunting from farther away. Maybe they will live to see another year at that rate.

Fall is definitely here. The nights are more frosty and the days are struggling to get into what is thought of as shirtsleeve range. Nonetheless, Model A's are out and about. Our local club had its annual mystery tour yesterday and everyone had a grand time under cloudy skies. No rain. It's not yet time to park the old guy for winter.

Election results are in and the four people elected to the MAFCA Board of Directors for the coming two years are **Kay Lee, Jay McCord, Ed Tolman and John LaVoy**. Congratulations to all of them. At the MAFCA National Awards Banquet (December 2nd through 5th) the new 2022 Board of Directors will decide who will be filling each of the Director chairs for that year. This selection process is undertaken by the Board each year. I hope you can join us in Fort Worth, Texas for that event. There will be lots of Texas fun and celebration.

MAFCA's visit to Hershey was a great success. Thanks to **Jimmy Taylor** for his seminar presentations and for all his work setting up and breaking down the tent contents each day. **Dave Libbey**, MAFCA Treasurer, spent a great deal of time in the tent supporting **Sandra Aguirre**, our Office Manager, answering questions and chatting with visitors. **Doug Linden**, Membership Director, also helped Sandra. The weather cooperated for the most part. Seeing folks after such a long COVID-19 separation was especially nice.

Happy Thanksgiving! I hope to see you along the Model A roads.

[Bill Truesdell, 2021 National President](#)

MAFCA Information

The **Model A Ford Club of America, Inc. (MAFCA)** is a California non-profit corporation and a national historical society dedicated to the restoration and preservation of Model A Ford vehicles as manufactured from 1928 through 1931. MAFCA's members are dedicated to the restoration, preservation, and enjoyment of Ford vehicles of that era. MAFCA is the largest club in the world dedicated to one make of automobile. Volcano A members are urged to join the Model A Ford Club of America, Inc. Visit the MAFCA website for a membership application. Dues are \$50 yearly and include a subscription to **The Restorer**.

Model A Ford Club of America

250 SO. CYPRESS • LA HABRA, CALIFORNIA 90631-5586
562/697-2712 • 562/697-2737 • FAX 562/690-7452

*From the desk of 2021 Chapter Coordinator
Robert Bullard*

December 2021

As the year barrels headlong towards completion and things start to slow down, there is still an important laundry list of individual and chapter Model A related tasks to complete.

First, all chapters are finishing up their officer and directory ballots and voting on which officers will lead their chapter beginning in January. If you haven't served on your local Chapters' Board now would be a good time to volunteer. I guarantee that you will get a ton of satisfaction from helping lead your local chapter.

Second, sign up and join in on your local chapter's end of year Holiday Party/Dinner. It's a perfect time to sit down and give thanks along with your local chapter members for the safe and prosperous 2021. Think of all the miles driven without incident and give thanks that we all drove our A's safely in 2021. I personally drove in Maine, New Hampshire, Kentucky, Texas, Montana, Idaho, Washington and Oregon this past year. Over 7,000 miles driven with many other dedicated Model A enthusiasts without any traffic incidents. We were truly blessed.

Third, thinking of those miles, now is a good time for you as an individual or your chapter to submit consideration for the various MAFCA driving awards available in recognition of individual or chapter driving records. Available on the MAFCA website is MAFCA Policy P2S05-G detailing all the specifics necessary to receive a driving recognition award. You still have time to submit your records.

And last, don't forget to send in your MAFCA chapter registration credentials necessary to maintain your Chapters' prime standing within MAFCA for 2022. We currently have 270 registered chapters and special interest groups. What a great resource MAFCA provides to us all. And, to my knowledge MAFCA remains the largest car club in the world dedicated to a single model and manufacturer of car.

That speaks volumes as to the popularity and enduring qualities of the Ford Model A and the strong cadre of individuals that keep that legacy alive.

Elaine and I hope to see or meet you somewhere down the road in 2022. Lots of good stuff coming next year and I can't wait to get going. I'll see you down the road and don't forget to pay your blessings forward. You will be helping to make the world a better place.

Robert,
MAFCA Chapter Coordinator

MAFFI Newsletter Minute-November 2021

Dear Model "A" Owners and Hobbyists,

Thank you for your continued support of The Model A Foundation and of our museum, located on the grounds of The Gilmore. Through your membership and donations, we have been able to establish a world class museum exhibiting displays of vehicles, era fashions and memorabilia associated with the Ford Model "A." Over the last year we have set aside a few vehicles to participate in the "Ride the Classics" program at Gilmore. This was made possible by the generous donations of our members of some great vehicles. We are currently researching the possibility of creating a Learn to Drive class for the Model A as well. A local collector donated eight Model A's to help make this possible.

The Model A Ford Foundation has built and outfitted the museum without incurring debt. Your donations and contributions have allowed us to manage the Foundation in this way. The Foundation's income primarily comes from annual membership dues, the selling of museum items such as bricks, proceeds from our annual Model "A" Day and from club and individual donations. We ask that you consider giving an additional gift to help us support our operations. Your gifts allow us to continue supporting our hobby with one of the best museums anywhere in the world.

All of us associated with the Model A Ford Foundation wish you well and hope you remain safe during this difficult time. Thank you again for your generous donations. Happy Holidays!

Jerry Morrissey, President, MAFFI

For Sale Items or Wanted



To place an "Ad" send your information to rusunen@comcast.net, or call Bob Rusunen at 360-828-5317

For Sale: Model A Luggage Rack like new. - \$200.00

Contact: John Durr at 360-513-0961 or john.durr@outlook.com



Support Our Local 2021 Club Suppliers


BECKER'S LLC est. 1965
 'T' and 'A'  Parts
 P.O. Box 374 - Eagle Creek, OR 97022-0374
 (503) 367-9676
 beckersautoparts@yahoo.com

Benny Bennett Holly Bennett

 4219 St. Johns Rd NE • Vancouver, WA 98661 • (360) 993-0284
 www.bennyspizzacafe.com


 HOUSEHOLD • AUTOMOTIVE • CUSTOM

 Mark Stillman 1501 NE 99th St.
Vancouver, WA 98665
(360) 573-7133
 www.bobspaintland.com

C'S AUTO MACHINE SHOP

- FLYWHEEL GRINDING
- RESURFACING
- BORING
- THERMAL CLEANING
- ROD REBUILDING
- BLOCK DECKING

- VALVE GRINDING
- ENGINE REBUILDING
- KNURLING
- PIN FITTING
- PRESS WORK
- ROTORS & DRUMS

JIM
574-4934 EDM
SPECIALISTS IN
REMOVING BROKEN TAPS,
DRILLS, STUDS & EASY-OUTS

OPEN M-F, 8 am-6 pm
 800 NE 86th Street
 Vancouver, WA 98665

We Save You Money www.CostLessAutoParts.net
Cost Less Auto Parts™
 "NO EXCUSES, Get it done!"

Orchards
 360-254-5710

Hazel Dell
 360-695-4423

Kelso
 360-353-5956


HART RADIATOR
 Complete Radiator Service
 501 Grade Street, Kelso
 Fax 360-425-1189
 Auto, Truck & Industrial
 Radiators, Heaters, & Air Conditioners
360-425-6220

Doug Hart
 360-430-3615 Cell
 doug@hartradiator.com

Allen Hart
 360-430-9169 Cell
 allen@hartradiator.com

WHOLESALE FLEET

KEN HEARD
 (360) 256-7985
 (503) 252-5505
 FAX (360) 256-7465
 5913 NE 127TH AVE. #200
 VANCOUVER, WA 98682

Amanda Utte
 RustyLugParts.com
Rusty Lugs
Rod's & A's

 Open: M-F 9am-5pm 8021 NE 142nd Ave
Vancouver, WA 98682
 Formerly:
 Floyds Model A Parts p. 360-887-3346
rustylugparts@gmail.com



