



Volcano A's, PO Box 970, La Center, WA 98629

www.volcanoas.net

Meeting: Church of the Nazarene – 16850 NE Fourth Plain Blvd, Vancouver, WA - Second Monday of Month – 7:00 PM

Lunch and Take-Out at Benny's Pizza & Café on 4219 St Johns Rd NE, Vancouver, WA

Volume 10 Issue 2

February

2021

*2020, 2017 & 2015 MAFCA Newsletter Certificate of Merit
 2018 – MAFCA Website of Distinction
 2017 MAFCA Website Certificate of Merit
 2013 MAFCA Newsletter of the Year 2015 & 2013 MAFCA Website of the Year*



1928 AR Tudor Sedan





President's Note ***January 22, 2021***

Well, here we are at almost the end of January and the weather has been very mild. The predictions are for more of the same weather, but things can change rapidly, just as our

Model A's sometimes do, maybe just reminding us to stay focused and take care of the small things we sometimes forget in our daily lives.

The vaccine will soon be available to what they say *people of a certain age*, I think of that phrase a little different, we are the more experienced and mature members of a great country.

Keep smiling,

Jerry

Celebrate President's Day – February 15



"My reading of history convinces me that most bad government results from too much government."

- Thomas Jefferson

2021 Board of Directors

President:

Jerry Lane - 360-263-6980
northforkmuseum@gmail.com

Vice President:

Corley Wooldridge 360-567-6349
Corley@corleyw.com

Treasurer:

Linda Willey – 360 687-0916
lindawilley@mac.com

Secretary:

Sherry Rusunen – 360-828-5317
rrusunen@comcast.net

Member at Large:

Austin Alling – 360-901-5998
Austin.Alling@icloud.com

Past President:

Jack Dusenberry - 360-256-0149
jdusie@comcast.net

Editor/Webmaster:

Bob Rusunen - 360-828-5317
rrusunen@comcast.net

Committee Chairs

Community Service: Joyce Swartz

Garage Workshop: Tom Pagel

NW Regional Rep: Roger Green

Public Relations: Dian Lane

Refreshments Coordinator: Nancy Wooldridge

Sunshine: Karen Huset

Tour Director: Corley Wooldridge



Articles and contributions are encouraged and may be used as space permits. The deadline for all articles is the 20th of the preceding month. The Volcano View is a monthly publication of the Volcano A's Chapter - MAFCA E-mail all proposed articles to:
rrusunen@comcast.net

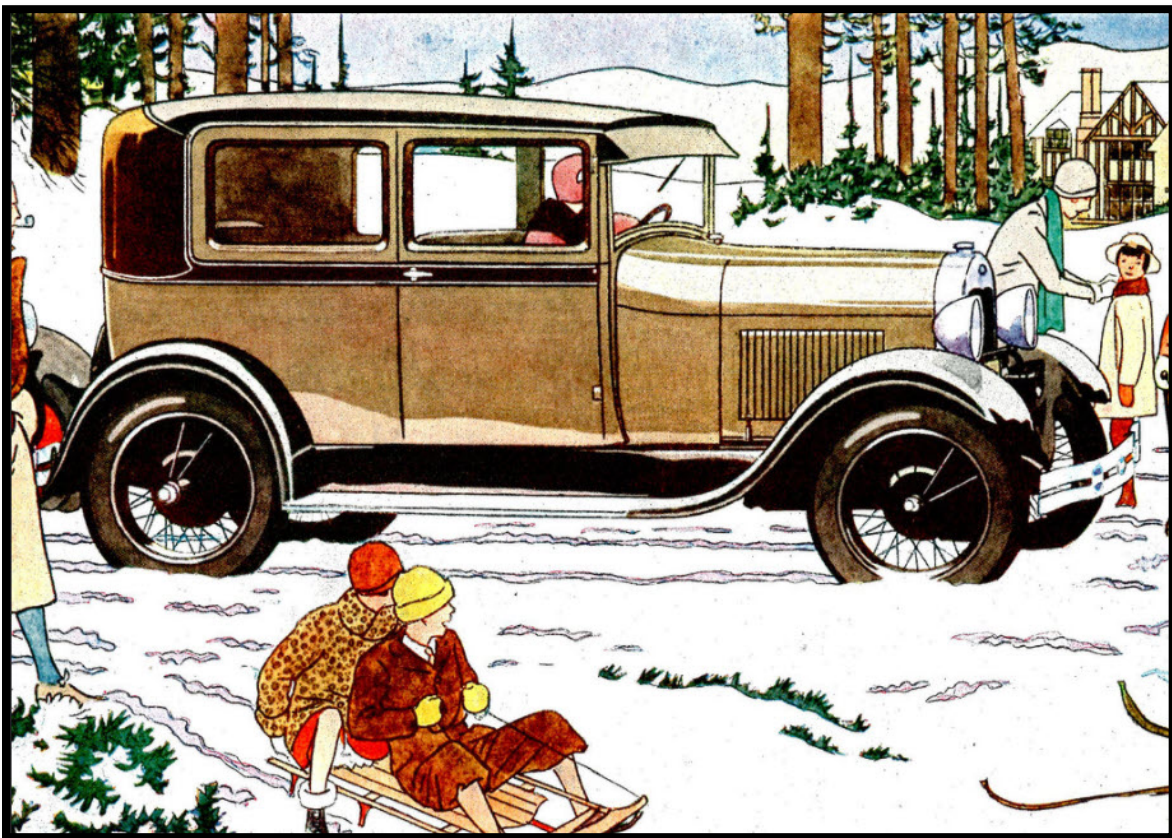
February



2021

Volcano A's Celebrations and Events Calendar

Sunday	Monday	Tuesday	Wednesday	Thursday	Friday	Saturday
	1 <i>National Freedom Day</i>	2 <i>Groundhog Day</i>	3	4	5	6 <i>Happy Birthday</i> Jack Mattingley Linda Neilsen
7	8 Club Meeting (Canceled)	9	10	11 <i>Happy Birthday</i> Steve Pargeter	12 <i>Lincoln's Birthday</i>	13
14 <i>Valentine's Day</i>	15 <i>Washington's Birthday</i> <i>Observed</i>	16	17 <i>Ash Wednesday</i> <i>Happy Birthday</i> Armita Mayer Nancy Wooldridge	18	19	20
21	22	23 <i>Flag Raised on Iwo</i> <i>Jima (1945)</i>	24	25 <i>Happy Anniversary</i> Jim & Marylan Kelly	26	27
28						



No Meeting Minutes for the Month of January

Photo Courtesy of
the Ford Archives.

[illegible]

Of course the real test was the Ford share of the total automobile market. This is not shown on the chart. Total U.S. auto and truck production declined 38% from 1929 to 1930, and another 18% in 1931. Ford's share of the market was 42.5% in 1930, but dropped to 30.8% in 1931. In the same years, Chevrolet captured 24.4% and 31.5% of the auto market.

1928-1931 Mens Fashion



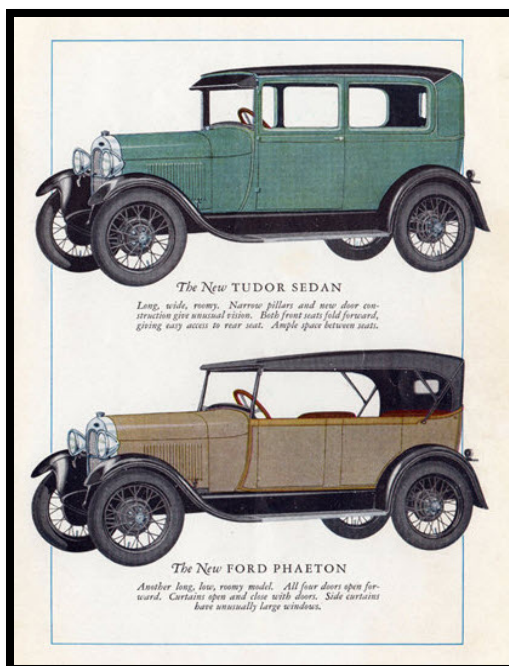
Source: Vintagedancer.Ccm/1930's

1928-1931 Ladies Fashion



Source: Vintagedancer.com/1930's

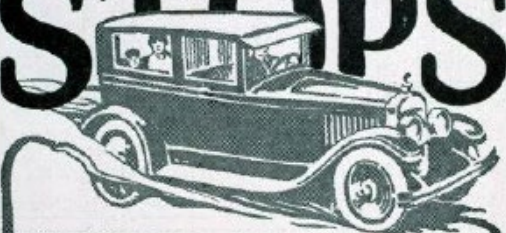
Model A Advertisement



Stewart Products Ad



STOPS




MOTOR SICKNESS

Travel sickness eliminates the enjoyment of motoring for thousands. The sensation of constant motion results in exhaustion, stomach disturbances, dizziness and headaches. "Mothersill's" stops and prevents the discomfort of travel by Sea, Train, Air or Motor at once.

For Sale by Chemists

Make your next trip in comfort with "Mothersill's"



The Mothersill Remedy Co., Ltd.
92 Fleet St., London, E.C. 4
Montreal New York Paris

1929 NATIONAL NEWS

After being hidden forty years earlier, poems of Emily Dickinson are found.

The "St. Valentine's Day Massacre" gangland hit, ordered by Al Capone against north side boss Bugs Moran, leaves 7 corpses on the floor of a north Chicago garage.

The New York Museum of Modern Art opens with Cezanne, Gauguin, Seurat and Van Gogh.

The character "Popeye" first appears in the Thimble Theater cartoon strip by Elzie Segar.

Bell Laboratories makes the first U.S. public demonstration of color television in New York; images are roses and a U.S. flag.


Sheffield Farms begins using wax paper cartons instead of glass bottles for milk delivery.

SeekPublishing Remember When 1929

The Restorer

MODEL A FORD CLUB OF AMERICA


Volume 85 • Issue 6
January/February 2021



The Magazine for Model A Ford Enthusiasts

"Any man who thinks he can be happy and prosperous by letting the government take care of him better take a closer look at the American Indian."

—Henry Ford



THE PATRIOT POST

Model A Era Fashions

1920s Fall & Winter Fashion- Dresses & Clothing



The 1920s clothing in the fall and winter wasn't very different than in the spring and summer. Colors changed to cooler tones such as black, navy blue, burnt orange, olive green, and burgundy red, and sleeves were longer with higher necklines.

Fabrics were often thicker cottons, wools, and velvet too but dress lengths did not change from season to season. To stay warm inside, women would wear thick cotton [stockings](#) and [union suits](#) underneath a dress. Warm coats, fur stoles, leather gloves and a fuzzy winter hat kept a woman warm when she was outside.

Some pictures from my 1920s catalogs to show you some of the clothing women wore in the fall and winter followed by some tips on dressing in 1920s winter clothing today. The early '20s still favored longer dresses year-round. These ankle length [house dresses](#) with long sleeves, high necks, and muted winter colors are perfect for staying warm inside.

1928-1929 – Entering to the end of the 1920s, we see dress lengths did finally go up to the knee, even in winter. Pleats and tiered skirts were popular details during the later years, which in winter also worked in favor of adding more fabric to dresses. Thick flat crepe, wool, and flannel were all materials easy to pleat into the latest styles. Notice, too, that instead of sheer insets, solid brown fabric insets alluded to bare skin yet revealed none. A sneaky way of being sexy and bundled up at the same time!



Source VintageDancer.com/1920s

MAFFI Newsletter Minute
January 2021

Happy New Year from the Model A Ford Foundation! We are looking forward, as many of you are also, to a better and more active year. Hopefully you have been able to get in your A's and do some driving before the weather makes it impossible. Many clubs have had some "No Contact Tours" which have been nice. We live in a beautiful world and there is no better way to see it than from a Model A!



Last year the Museum had to say goodbye to a beautifully restored Woody belonging to Tim Wiggins that had been on loan to the Museum for several years. As luck would have it, a 1931 Woody has just been donated to the museum by Rob Gibby from Pennsylvania. Rob has owned this car since 1963 while he was in school. We hope to have it safely installed in the Museum by February.

Did you know that you can get a tour of the museum right from the comfort of your own home? Go to our website: www.maffi.org and click on the link "Tours". There is a tour that was filmed in September, led by MAFFI President, John Begg and others. It was focusing on the First Responders Display but also gives you an idea of what's inside. You truly have to see it in person to appreciate all that is there. You could spend an entire day if you looked at every exhibit and read everything. We hope to have other short videos coming soon so check back often.

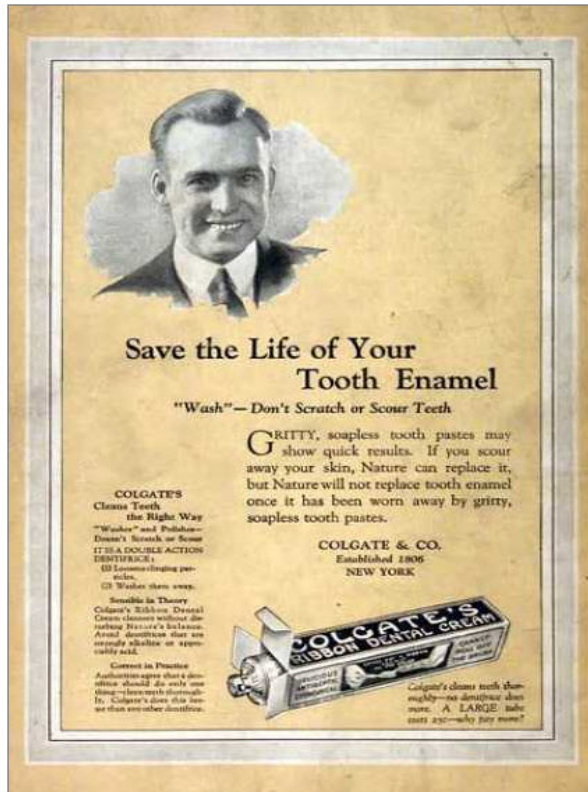
Thank you for your continued support of the Model A Ford Foundation through your membership and your donations.

Tiny Tips

POP-OUT SWITCH LUBRICATION

Original pop-out switches grow sticky with age due to gum and electrolysis. Before junking the switch or waiting until the key breaks off, try this solution: Turn the key until switch pops out. Under the first "F" in the word "Off" drill a 1/16" hole carefully through the brass shell. Now the cylinder can be loosened with WD-40 using the plastic tube.





This is just a bit of fun.



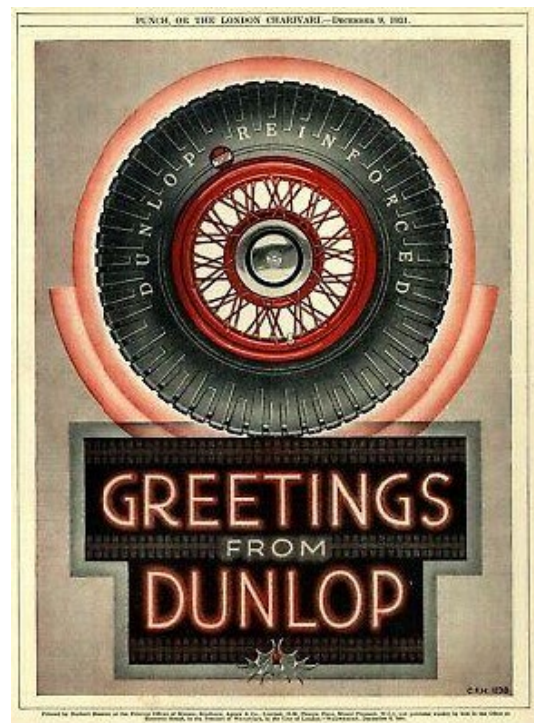
Here is a great picture with a few cars and their owners trying to catch the game at Wrigley field without paying for it.

Reprint from The Desert A's October Issue 2020

Funny Quarantine Jokes

1. Ran out of toilet paper and started using lettuce leaves. Today was just the tip of the iceberg, tomorrow remains to be seen.
2. After years of wanting to thoroughly clean my house but lacking the time, this week I discovered that wasn't the reason.
3. Yesterday I ran out of soap and body wash and all I could find was dish detergent. Then it Dawned on me.
4. I never thought the comment "I wouldn't touch them with a six-foot pole" would become a national policy, but here we are!
5. I'm not talking to myself, I'm having a parent-teacher conference.
6. This morning I saw a neighbor talking to her cat. It was obvious she thought her cat understood her. I came into my house, told my dog — we laughed a lot.
7. Day 121 at home and the dog is looking at me like, "See? This is why I chew the furniture!"
8. Nothing like relaxing on the couch after a long day of being tense on the couch.

- found in the AuSable A's newsletter



MAFCA Invites You to the 2021 National Tour
June 20 - 25
2021
North Conway, NH

*Sign up for Early Bird Newsletter
whitemountainadventure2021@gmail.com*

Hub and Spoke Tour Format
*Enjoy roads less traveled, taking in peaceful surroundings and
breathtaking views of all that the Granite State offers*

Visit:

- Mount Washington Auto Road
- Kancamagus Highway
- Clark's Trading Post
- Conway Scenic Railway
- Settlers Green Shopping Outlets
- Mount Washington COG Railway
- Mount Washington Cruises
- Castle in the Clouds

**A White Mountain Adventure
MAFCA
2021
NATIONAL TOUR**

*(background watercolor courtesy of
www.whitemountainart.net)*

Hosts:
New Hampshire Lakes Region Model A Club

www.2021mafanationaltour.com www.facebook.com/groups/942306399533378

**A White Mountain Adventure,
2021 National Tour Update**

February 2021

"ADDITIONAL LODGING - HOTEL INFORMATION"
The Host Hotel North Conway Grand Hotel is nearly sold out for the

MAFCA 2021 National Tour "A White Mountain Adventure"

June 20 - 25, 2021 Hub and Spoke Tour
North Conway, NH

We've Added the
Green Granite Inn - A second hotel for the 2021 National Tour has been added, the Green Granite Inn. Attached you will find a PDF file with the details which can also be found on the tour website. They will honor the same \$129.00 group rate as the host hotel.

Code: National Model A Tour 2021

Green Granite Inn & Conference Center 1515 White Mountain Highway (Route 16), North Conway, NH 03860 Phone: 800-468-3666 or 603-356-6901. Email: info@greengrante.com

www.greengrante.com

Mark Smith Tour Chairman
Keith Costello Vice Chairman
Host: New Hampshire Lakes Region Model A Club
www.2021mafanationaltour.com
www.facebook.com/groups/942306399533378
Email: whitemountainadventure2021@gmail.com

2021 National Tour Update
January 2021

"REGISTRATION FORM AND APPAREL INFORMATION"

MAFCA 2021 National Tour "A White Mountain Adventure"

June 20 - 25, 2021 Hub and Spoke Tour - Home Base - North Conway, New Hampshire.

Registration form and Apparel Information can be found on our website:
www.2021mafanationaltour.com and in the Jan/Feb The Restorer's online digital copy as well as in the hard copy print.

Please be reminded that you must be an active member of MAFCA to register and to participate in the tour. Information for becoming a MAFCA member can be found on the tour website.

Important: If you register and pay online with PayPal please check back and sign in on your PayPal account after 48 hours to approve the payment transaction for the tour.

The Host hotel has a limited number of rooms left. We have made arrangements with another sister hotel if the host hotel sells out and will post it on our website: www.2021mafanationaltour.com

Please check our tour Website, Facebook, MAFCA's website and the "The Restorer" for additional information and updates as they become available.

Sincerely,

Mark Smith Tour Chairman
Keith Costello Vice Chairman

Host: New Hampshire Lakes Region Model A Club

www.2021mafanationaltour.com
www.facebook.com/groups/942306399533378
Email: whitemountainadventure2021@gmail.com

Model A Ford Club of America

250 SO. CYPRESS • LA HABRA, CALIFORNIA 90631-6586
952/987-2712 • 952/987-2737 • FAX 952/980-7452

*From the desk of 2021 Chapter Coordinator
Robert Bullard*

To all the MAFCA Chapter Coordinators, Newsletter Editors and Local Chapter volunteers, I would like wish everyone a great start to 2021. I have a feeling it won't be easy and we very well could look back and think 2020 was a piece of cake compared to the unknowns we face for 2021. As the face of our local MAFCA chapters, I want to thank you for keeping our hobby front and centered with our many members. Every chapter of every car club I come in contact with is facing the same challenges of keeping our clubs active, the membership vibrant and our membership informed and active.

This is my inaugural article and I look forward to not only conversing with you this year but also getting to know you personally. Information is knowledge and keeping the information flowing will allow our membership to make the best and most informed decisions for the local chapters.

With all the activities that have been canceled or delayed the MAFCA Board is pleased to inform the membership that the National Tour scheduled for June is still scheduled and a second hotel was recently added to the available accommodations. All systems are still on go for a great tour and I for one can't wait. New Hampshire is one of only four states I've never visited and one of the few states I've yet to drive my Model A. What a "bucket list" trip this will be for me and my wife. Make your plans now. You don't want to miss this one!

"Paying it Forward" - Robert Bullard





Header from the MAFCA Website

MAFCA President's Page Some Thoughts from Bill February 2021



In much of the country, streets are still covered with the white stuff and Model A driving is problematic. Yet, work behind the scenes continues to get our favorite cars ready for their next springtime run. Front end alignment, lubrication of all the joints, oil changes and radiator flushes top the list. All of these things and more should be on the “to do” list for preparation of your vehicles for the first picnic of the year.

It doesn't much matter if we are still stuck in home restriction during these first few months of the new year. We can collect folks from local clubs for fantasy tours to places you have always wanted to see. If not for COVID-19 you would be driving to those destinations in person. Until then, ZOOM sessions allow us to travel virtual highways, exploring waypoints and the final special locale. We shouldn't feel isolated when we can have fun with these alternative tours.

I'll be thinking of you and wishing you a Happy New Year. May you and your loved ones be safe.

Bill Truesdell
2021 National President

MAFCA Information

The **Model A Ford Club of America, Inc. (MAFCA)** is a California non-profit corporation and a national historical society dedicated to the restoration and preservation of Model A Ford vehicles as manufactured from 1928 through 1931. MAFCA's members are dedicated to the restoration, preservation, and enjoyment of Ford vehicles of that era. MAFCA is the largest club in the world dedicated to one make of automobile. Volcano A members are urged to join the Model A Ford Club of America, Inc. Visit the MAFCA website for a membership application. Dues are \$50 yearly and include a subscription to **The Restorer**

The Annual Veterans of the Road Old Car Picnic **Saturday August 7th, 2021**

The picnic will take place at 1354 Pleasant Valley Road, West of Chehalis, WA. The theme for 2021 will be the 80th year celebration of “Sinking of the Battleship - Bismarck” in 1941. Mark your calendar for this event, and more information will follow later.

Jim's Tech Tip by Jim Cannon

Towing Your Model A on a Trailer



There will be times when you need to transport your Model A on a trailer. Here's a tip on trailer loading to help you tow safely.

When the car is loaded on the trailer, the tongue weight of the trailer on the trailer hitch (on the back of your car or truck) should be between 10-15% of the total weight of the combined "trailer+Model A". If you load the trailer with less than 10% of the weight on the hitch, the trailer will sway as the speed increases, which is very dangerous. Over 15% can put too much unnecessary load on the back of your tow vehicle, which can take weight off of your front wheels (needed for steering and braking) – which is also not good.

How do you know the weight of your "trailer+Model A"? I took my car on the trailer to my local feed store where they have a scale. Many truck stops also have scales. I parked the loaded trailer on the scale, disconnected my truck, and moved the truck off the scale. They charge a small fee to give you the weight. Once I had that total weight, it was easy to calculate 10% and 15% of that. For example, if your "trailer+Model A" is 4,200 pounds, your Target Tongue Weight is 420 to 630 pounds, call it 525.

Once you know the Target Tongue Weight that you are shooting for, how do you know what the actual tongue weight is when you put the Model A on the trailer? You can figure it out with a ruler or tape measure. Go to a building supply store (like Home Depot) with your tow vehicle and no trailer. Measure and record the distance between the bottom of the trailer hitch and the ground. Now start loading 80# bags of dry concrete mix into your car trunk or truck bed until you have loaded your Target Tongue Weight. (I had a helpful young guy at HD load them in for me.) The exact load is not critical, but it must be above your 10% number. Now measure and record the distance between the bottom of the trailer hitch and the ground again. Once you have those 2 numbers, you can ask the helpful lad at the store to unload all those bags and put them back! Thankfully, you only have to do this exercise one time.

With these 2 measurements, before and after the load was added, you can quickly figure out the change in height above the ground when you have your Target Tongue Weight on the back of your tow vehicle. This CHANGE in the height of your trailer hitch is the HITCH DROP that you need to get when you load your Model A on the trailer. Before attaching the trailer to your tow vehicle in the future, measure the height of the trailer hitch above the ground. Now attach the trailer and load your Model A on it. Pull the Model A forward on the trailer until your trailer hitch has dropped by your Target Hitch Drop. You can roll the Model A forward and backward a bit on the trailer to get the amount of drop that you are shooting for. Now tie the Model A down in this position on the trailer and be confident that you have enough, but not too much, tongue weight on your trailer hitch.

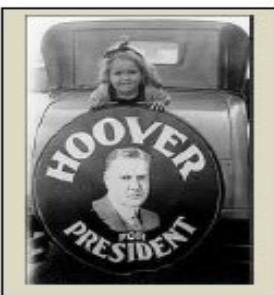
I have marked on my trailer the best spot to load a Model A to get the target tongue weight and hitch drop. When I put them on the mark, the tongue weight is correct.

For more tips on safe towing, check out the following web site: <https://www.curtmfg.com/towing-safety>

Let's be careful out there, and Have a Model A Day!
Jim Cannon



Model A Families Migrating During the 1930's



In April 1936 a young photographer named Arthur Rothstein showed up in Boise City to take photographs for the federal government's Resettlement Administration. Rothstein's boss, Roy Stryker, believed that pictures could be a powerful tool to show not only the multitude of problems the nation was facing, but what the government was doing about them. Over the course of seven years, as the agency became part of the Farm Security Administration, Stryker would launch an unprecedented documentary effort, eventually amassing more than 200,000 images of America in the 1930s taken by a talented cadre of photographers, including Walker Evans, **Russell Lee**, Marion Post Walcott, John Vachon, and Dorothea Lange. What follows are some of dozens of the photos **Russell Lee** took of the Elmer Thomas family as they migrated from Muskogee, Ok to McFarland, California in July 1939 in their tired '28/'29 Model A Pickup. Elmer, Edna, and children Amos, 16; Frank, 11; and little Tommy and **Ruby**, 6 and 4 made the exhausting journey in about a month.

Interviewed years later **Ruby** said this about the trip: "We were coming across the desert - I think the Mojave Desert - and we had ran out of water," recalled **Ruby**. "I was so thirsty I was crying for a drink of water. Dad kept saying wait, and I kept crying and finally he said, 'Damn it, shut up!' and then he stopped." Elmer Thomas, remembered by his children as a practical, unflappable man who always provided, tapped the radiator of the Model A and handed a rusty, hot cup of water to Edna, who filtered it through a pillow case. And that was how **Ruby's** thirst was quenched.

— Orlando Sentinel

To read more about this compelling story in the Orlando Sentinel go here: [Thomas Family Story](#)

Dallas The Quail Tale December 2020

Some Interesting Cars World Leaders Ride-in...

Presidents, dictators, and even religious leaders have in one way or another shaped the history of the world as we know it. They might come from different countries and with different political ideologies; however, they all have one thing in common: they had to get from point A to point B.

The means of transportation used by political figures always generate interest among the public and some of these cars have become as iconic as the people they have transported. Extravagance and unique features are common themes among the cars chosen by these leaders throughout the years. They are special vehicles meant for the most important people.

Mercedes-Benz M-Class: Pope Mercedes has a rich history of being chosen as the designated vehicle used by the Pope, from the 1930s to this day. The 'Pope-mobile' is based on the highly appreciated Mercedes SUV, the M-Class. On the back of the car, there's a dome with a throne used by the Pope.

Toyota Century Royal: Emperor of Japan the Century Royal is considered the flagship model and one of the rarest Toyota cars ever and it is very rare that you will ever see one outside of Japan. The car which has been in production from 1967 has seen only 3 generations. The car is powered by a V8 engine that produces 375 horsepower and an electric engine that brings the total output to 425 horsepower. This car is only used by the family royals or Japanese diplomats abroad.

Ford Thunderbird Convertible: John F. Kennedy JFK owned a 1961 Ford Thunderbird convertible third generation. This car is known as the 'bullet bird' as the new design of the front of the vehicle had been completely reshaped and made pointier. It was a quite powerful model as it was powered by a 6.4-litre V8 that produced over 300 horsepower. The same model was also used in 1961 as the Pace Car for the Indy 500. President Kennedy loved this car so much that for his inauguration parade he used 50 identical Thunderbirds made specifically for that day.

Jeep CJ-8 Scrambler: Ronald Reagan An absolutely iconic car that was a present from his wife, Nancy, and it was used as a shuttle around the president's ranch. It has also been used to carry visiting dignitaries such as Mikhail Gorbachev. The car which was painted in a rather unique blue was a true off-road beast and it was powered by a four-cylinder engine that produced just 82 horsepower.

Cadillac One: US President Donald Trump As the name suggests this is the one, the ultimate Cadillac. It is basically a tank in disguise and as a matter of fact it is referred to as 'the beast.' The windows of the car are made of 5 layers of glass and polycarbonate, making them bullet-proof and virtually indestructible. The tyres are shred and puncture-resistant and the doors are reinforced with steel plates that can easily sustain an explosion blast. Also, in order to prevent any fire, the gas tank is filled with a special foam that prevents it from catching fire even when directly hit. According to an NBC report, the Cadillac weighs an incredible 20,000 pounds.

Corvette Stingray C2: Joe Biden The beautiful 1967 C2 is just one of the many examples that show how much Joe Biden loves Corvettes. The Stingray is one of the most beautiful cars ever produced and it was a wedding present from his father. The C2 was and still is a beautiful beast as it is powered by an L79 V8 engine that generates a fantastic 350 horsepower and can push the car from 0 to 60 mph in just 5.8 seconds. This model is one of the most iconic cars ever built by Chevrolet thanks to its unique design.

Citroen DS19: Charles De Gaulle This car was known as 'La Deesse', the goddess, as it is credited to have saved the life of De Gaulle during an assassination attempt in 1962. The car was first presented in 1955 and it had a 1.9-litre engine and was equipped with a rather unique hydro-pneumatic suspension. The system was equipped with shock absorbers that allowed the car suspensions to adjust its height and firmness depending on the load weight and the road type. Thanks to this advanced system, when all four tires were punctured by the bullets during the assassination attempt, the car was still drivable as the suspension kept it stable, allowing the driver to maintain control of the vehicle and speed up away.

Amphicar - Lyndon B. Johnson This is probably one of the most extravagant cars ever built as it can go both on land and in the water. The car was loved by the President as he enjoyed playing pranks, at his ranch, on his guests such as White House secretary Vicky McCammon. Johnson would bring the car to the top of a hill and then drive the vehicle down towards the lake and scream that the brakes were malfunctioning, ultimately terrifying his unaware passengers. The Amphicar was in production from 1961 to 1968 and it had two propellers under the rear bumper that allowed the vehicle to easily navigate in the water.

Mercedes-Benz 600s Pullman - Saddam Hussein This 1978 model is rather unique as it has a solid roof in the front seats and a foldable one in the back so that it is possible to open it and stand up in the car. The 600s model has been used by a wide variety of people in the 80s from pop stars to dictators as for years it has been considered the ultimate symbol of luxury and elegance.

Rolls Royce Silver Spur II – Brunei - Here is a car that reflects how lavish and rich world leaders can be. While the rest of the world enjoys their wedding day in usually white or black cars, Brunei Sultan, Hassanal Bolkiah, rode in a gold-coated carriage. The stretched vehicle is a Rolls Royce Silver Spur II. After the Sultan had it plated with 24-carat gold, its price went up to \$14 million.

Bentley State Limousine – Queen Elizabeth If you're a ruler of a great nation, you can expect car manufacturers to make cars for you. This is the story of the Bentley State Limousine gifted by the manufacturer especially for Queen Elizabeth II. It's built with armored bodywork and glass that can withstand bullets. The cabin can also be sealed airtight in the case of blasts and chemical attacks.

Source: www.hotcars.com via Model A Club of South Australia January 2021

For Sale Items or Wanted

To place an "Ad" send your information to rusunen@comcast.net, or call Bob Rusunen at 360-828-5317

FOR SALE: 1929 Ford Model A wooden boat tail speedster



Custom built Model A wooden boat tail speedster. Chassis and front end are original 1929 Model A. From the cowl back is a strip cedar boat tail body. Everything on this car was rebuilt in 2012, including the engine which is a bored .060 oversize, with new pistons and rings. New bearing babbitt, reground crankshaft, a reground touring camshaft with a .304 lift installed. New valve guides, springs and adjustable lifters. Rebuilt oil pump and all new head studs and nuts. Rebuilt distributor with modern style points and condenser. The Zenith carburetor was rebuilt with a modern neoprene tip float valve and new float inshe water pump was rebuilt with a stainless-steel shaft and leakless rear bearing kit. The


flywheel face was reground, a new ring gear was installed on the flywheel. A new clutch, rebuilt pressure plate and new throw-out bearing installed. The gears in the transmission were good, so just new bearings shift detent plunger and gaskets were installed. A new chrome shifting lever and brake handle has been installed. The differential was rebuilt, with new gears, bearings and seals. The front end has new kingpins and bushings, new wheel bearings and seals. The brakes were completely rebuilt, new brake rods were installed. The generator has been rebuilt and a new semi-conductor cutout installed. The gas gauge was rebuilt with a modern float to withstand ethanol gas.

**The car currently resides in Santa Barbara, CA. Asking price: \$13,000,
Tom Spoonerow, 805-284-2228.**

Note: Periodically some materials printed in our newsletter may have been borrowed from other club newsletters. We thank other clubs for sharing their newsletters with the Volcano A's. Also, when sources are known they will be included.



Support Our Local 2021 Club Suppliers


BECKER'S LLC est. 1965
 'T' and 'A'  Parts
 P.O. Box 374 - Eagle Creek, OR 97022-0374
 (503) 367-9676
 beckersautoparts@yahoo.com

Benny Bennett **Holly Bennett**

 4219 St. Johns Rd NE • Vancouver, WA 98661 • (360) 993-0284
 www.bennyspizzacafe.com

Bob's PAINT LAND
 HOUSEHOLD • AUTOMOTIVE • CUSTOM

Mark Stillman 1501 NE 99th St.
Vancouver, WA 98665
(360) 573-7133
 www.bobspaintland.com

C'S AUTO MACHINE SHOP

- FLYWHEEL GRINDING
- RESURFACING
- BORING
- THERMAL CLEANING
- ROD REBUILDING
- BLOCK DECKING

- VALVE GRINDING
- ENGINE REBUILDING
- KNURLING
- PIN FITTING
- PRESS WORK
- ROTORS & DRUMS

JIM
574-4934 EDM
SPECIALISTS IN
REMOVING BROKEN TAPS,
DRILLS, STUDS & EASY-OUTS

OPEN M-F, 8 am-6 pm
 800 NE 86th Street
 Vancouver, WA 98665

We Save You Money www.CostLessAutoParts.net
Cost Less Auto Parts™
 "NO EXCUSES, Get it done!"

Orchards **Hazel Dell** **Kelso**
 360-254-5710 360-695-4423 360-353-5956


HART RADIATOR
 Complete Radiator Service
 501 Grade Street, Kelso
 Fax 360-425-1189
 Auto, Truck & Industrial
 Radiators, Heaters, & Air Conditioners
360-425-6220
 Doug Hart Allen Hart
 360-430-3615 Cell 360-430-9169 Cell
 doug@hartradiator.com allen@hartradiator.com

WHOLESALE FLEET

KEN HEARD
 (360) 256-7985
 (503) 252-5505
 FAX (360) 256-7465
 5913 NE 127TH AVE. #200
 VANCOUVER, WA 98682

Amanda Uthe
 RustyLugParts.com

Rusty Lugs
Rod's & A's

 Open: M-F 9am-5pm 8021 NE 142nd Ave
Vancouver, WA 98682
 Formerly:
 Floyds Model A Parts p. 360-887-3346
rustylugparts@gmail.com

