



www.volcanoas.net

Meeting: Church of the Nazarene - 16850 NE Fourth Plain Blvd, Vancouver, WA - Second Monday of Month - 7:00 PM
 Guys breakfast meeting every Wed. (7:00am) at Hockinson Café, 219 NW 20th Ave, Suite 100, Battle Ground, WA
 Guys lunch on Fridays (11:30 am) at Benny's Pizza & Café on 4219 St Johns Rd NE, Vancouver, WA

Volume 4 Issue 7

July

2015

2013 MAFCA Newsletter of the Year 2013 MAFCA Chapter Website of the Year

2015 Club Officers

President:

Jerry Lane - 360-263-6980
northforkmuseum@gmail.com

Vice President:

Lynn Mattingley - 503-753-1363
lynnmattingley@aol.com

Treasurer:

Linda Willey - 360 687-0916
lindawilley@mac.com

Secretary:

Sherry Rusunen - 360-828-5317
rrusunen@comcast.net

Member at Large:

Leonard Willey - 360-687-0916
lindawilley@mac.com

Past President:

Jack Dusenberry - 360-256-0149
j dusie@comcast.net

Editor/Webmaster:

Bob Rusunen - 360-828-5317
rrusunen@comcast.net

Articles and contributions are encouraged and may be used as space permits. The deadline for all articles is the 20th of the preceding month. The Volcano View is a monthly publication of the Volcano A's Chapter - MAFCA E-mail all proposed articles to: rrusunen@comcast.net.

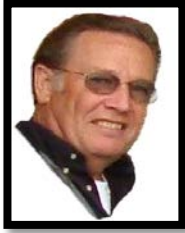
Photo of Month



Model A Line-up at the NW Model A Picnic

Ridgefield July 4th Parade

If you are planning to join our Club in participating in the parade, please be sure that you are down at Ridgefield's Abrams Park by 9:30 am.



President's Note June 30, 2015



The Walla Walla Sweet A's have just completed the 2015 Regional Meet and should be congratulated several times over for hosting and doing an outstanding job of entertaining, educating and scheduling many fun filled activities.

On our two trips on secondary roads we experienced many scenic areas along the way with only three repairable breakdowns, they included a coil, tailpipe disconnect and fuel starvations, you know the saying, what happens there stays there so if you want to know all the details, plan to attend the next event and enjoy.

Our next event is the Ridgefield 4th of July Parade on the 4th, lineup in Abrams Park by 9:30 AM. Come out and enjoy the fun!

Jerry

Committee Chairs

Community Service: Joyce
Swartz/Tom Ryan

Garage Workshop: Tom Pagel

Library/Historian: Terry Findley

NW Regional Rep: Jack Dusenberry

Public Relations: Dian Lane

Refreshments Coordinator: Nancy
Wooldridge

Sunshine: Pat Dusenberry

Tour Director: Lynn Mattingley



*Henry Ford's Birthday
is July 30th*

Front Page Photo
Here are a few of the Model A's
that made it the Annual Fletcher
Anderson's NW Model A Picnic.

Volcano A's General Membership Meeting Minutes

June 8, 2015

CALL TO ORDER: 7:00 pm by President Jerry Lane.

GUEST: Fred Horoux was introduced. He is a car detailer. Also Ardis Collin's grandson, Austin Alling and friend, Brandy, were also introduced. Austin has Collin's 1929 Sports Coupe.

TOURS: VP Lynn Mattingley Announced 3 upcoming tours: 1) Fletcher's Picnic, Sat. June 13th, meeting in La Center at 9:00. Bring a dish to share, as well as chairs. 2) Regional Meet in Walla Walla June 22nd-June 27th leaving from Pendleton parking lot in Camas at 9:00. 3) 4th of July Parade in Ridgefield. Meet by 10:00 in Abrahms Park.

TREASURER: Linda Willey gave the financial report.

EDITOR/WEBMASTER: Bob Rusunen asked that anyone with pictures of their cars should send them electronically to him, so he can feature them on the cover of the newsletter.

COMMUNITY SERVICE: Joyce Swartz announced 106 lbs. of food was collected last month for the Food Bank bringing the year total collected to 528 lbs. Some of the club members helped sort food for the Food Bank, sorting 4000 lbs.!! Gary Swartz stated that there is a car show at the Battle Ground Burgerville this Wed. June 10th. All money collected during this function is used to buy school supplies for those students who cannot afford them. You can also bring school supplies to the function and donate them. Gary also asked what other things we would like to do as a club for the community, such as visiting Senior Living Residences or Assisted Living Residences. He will look into this possibility.

SUNSHINE: Pat Dusenberry announced all is well with our members!!

LAVA LADIES: Linda Willey showed material donated to the Ladies Basket for the Regional Meet, which can be used for quilting. Dian Lane said we will have 2 baskets to donate...one for the ladies and one for the men!!

OLD BUSINESS: Fletcher picnic was again mentioned. Also NW Regional Meet. We will leave via Hwy. 14 and then head to the back scenic roads. However, NO gravel roads will be used! July 11th is the Mosier Tunnel Tour. We, as a club, will not participate. Sept. 19th is the WAAAM Air & Auto Museum event. The Lava Ladies came up with 2 ideas for the printing on the paving brick purchased for the Ford Museum in Michigan. 1)"Red Hot Lava Ladies Smoldering in Vancouver WA"; 2)"No Model A Left Behind, Volcano A's Vancouver WA." The club voted to use number 2.

NEW BUSINESS: Edward McCallum has passed away, so his 1921 Model T and 1930 Model A are for sale. Jerry Lane has info on the details.

RAFFLE: Becky Blick won the 50/50 raffle of \$40.00.

REFRESHMENTS: MJ Peden and Carma Huset served cheese and crackers along with fruit and cookies!.

ADJOURNED: Meeting was adjourned by Jerry Lane.

Submitted by Sherry Rusunen.



Happy Anniversary

4 Scott & Lisa Deane
10 Bob & Carma Huset
12 Martin Binder & Kay Scott
18 Leonard & Linda Willey
27 Ken & Louise Berg
27 Rayburn & Lisa Mitchell

Happy Birthday

6 Donald Olson
9 Carma Huset
13 Pat Cox
16 Wayne Thompson
22 MJ Peden
23 Rayburn Mitchell
24 Kay Scott (Binder)
27 Eddy Pitts

Refreshments

July: Jann Jones & Patty Sondenaa

August: Club Picnic

September: Sandra Guyot & Jennie Ryan

October: Joyce Swartz & Linda Neilsen

November: Dianne Earnest & Roberta Emerick

December: Club Potluck Dinner & Auction

Trivia Knowledge Nugget

July 1931 Congress makes "The Star-Spangled Banner" our second national anthem

Factory Foto of the Month



1928 55-A Tudor Sedan

Future Events

Jul 19 Forests Grove Concours d' Elegance, Forest Grove, OR
Aug 7-8 Pig-n-Ford Races, Fair Grounds, Tillamook, OR
Sep 19-20 50th Annual Harvest Swap Meet, Chehalis, WA
Dec 14 Club Christmas Dinner and Auction, Lane's Museum, La Center, WA

Tours

Jul 4 July 4th Parade Tour, Ridgefield, WA
Aug TBD Annual Club Picnic and Tour, La Center, WA
Sep 19 International Model A Day Tour, Hood River, OR
Sep TBD Volcano A's President's Tour
Nov 8 Fort Vancouver Veterans Day Parade Tour, Vancouver, WA



Header from the MAFCA Website

MAFCA President's Page - Garth Shreading - June 2015



I write this from Niagara Falls as Janet and I are on the road traveling to the **Lobsters and Lighthouses** Tour. This is MAFCA's 5th National Tour and one I've been looking forward to since I first learned of it. Over the years, we have made many new friends on MAFCA National Tours and it seems many of these people keep coming back time after time. It's been interesting receiving reports from fellow travelers making their way to Maine, many turning the trip into extended vacations traveling with friends.

Many of those making the journey are posting on MAFCA's Facebook. If you aren't part of MAFCA's Facebook, check it out. Besides the interesting reports of those traveling to Maine, there are many interesting tidbits from around the MAFCA world.

In the July-August issue of *The Restorer* is a list of chapters. If your chapter is marked delinquent, there is a problem with your annual registration and your chapter is in danger of losing its charter, which includes losing insurance benefits. Be sure to contact Jill Sullins, our [Chapter Coordinator](#) and she will help resolve the problem.

While we're on the topic, some have questioned why updated information on chapters is required annually? The insurance premium for chapter insurance is determined by the number of members in each chapter. In our immediate future, more detailed reporting requirements will be implemented. So, it is important that the designated person in each chapter take the time to accurately and completely fill out the form. I'm afraid to say we will become stringent on this starting now.

Information

The **Model A Ford Club of America, Inc. (MAFCA)** is a California non-profit corporation and a national historical society dedicated to the restoration and preservation of Model A Ford vehicles as manufactured from 1928 through 1931. MAFCA's members are dedicated to the restoration, preservation, and enjoyment of Ford vehicles of that era. MAFCA is the largest club in the world dedicated to one make of automobile. Volcano A members are urged to join the Model A Ford Club of America, Inc. Visit the MAFCA website for a membership application. Dues are \$40 yearly and include a subscription to The Restorer.

Model A ERA Clothing Fashions

[illegible]

Source: Phillip Lenssen at vintageadbrowser.com

Fords for All Seasons

THE SATURDAY EVENING POST
November 4, 1933

The Same Good Car Through Many Seasons

AT THIS SEASON of the year, as autumn prepares to bid adieu, it is good to know that the new Ford is fully prepared to meet the sterner needs of winter driving.

Cold weather emphasizes the value of its simplicity of design and its dependable performance under all conditions. There is an enduring quality, too, in its exterior finish.

The plywood lacquer is not affected by cold, or the usual hazards of snow or water. The Rustless Steel used for the radiator shell, hub caps, cowl finish strips, and other exterior metal parts is an additional assurance of permanent beauty.

The fabrics used for trimming the interior of the new Ford are selected both for appearance and durability. Unusual care is taken to maintain their high quality.

Laboratory tests are constantly being made for weight, the character of the cloth, and the grade of the yarn used in these fabrics and trims. There are also numerous daily tests of the dyes, the exact in the warp and woof.

the percentage of wool, and a rubbing test equivalent to years of actual wear.

The interiors of the Town Sedan, De Luxe Sedan and De Luxe Coupe are examples of this craftsmanship in manufacture. In these body types you may choose either tan Bedford cord, made of fine wool worsted, or brown mohair. Though soft and luxurious, this mohair will not crush easily and is long wearing because it is faced with genuine Angora mohair and wool worsted.

The Ford Motor Company purchases millions of yards of upholstery material yearly and is therefore enabled to give you exceptionally high quality without increasing the price of the car.

With reasonable care the new Ford will maintain its original sheen and brilliance for a long period of time. Mechanically it has been made to give you many thousands of miles of comfortable, satisfactory motoring at a very low cost per mile.

FORD MOTOR COMPANY





THE NEW FORD ROADSTER



THE NEW FORD COUPE



THE NEW FORD TOWN SEDAN



THE NEW FORD DE LUXE SEDAN

THE SATURDAY EVENING POST
November 4, 1933



THE NEW THREE-WINDOW TOWN SEDAN

Source: Ford Model A Advertising on Pinterest

Fact-checking car acronyms

Lost in the midst of time are the identities of the clever individuals who created pithy acronyms out of the names of various car manufacturers. Although they were coined long before the age of the Internet troll, it's no surprise that none are remotely positive. But are they remotely true?

FORD, "Found on Road Dead": This one can probably be chalked up to the bitter Ford vs. Chevy rivalry. Classic Fords from the Model A to the Mustang tended to be rock-solid reliable. OK, the six-volt electrical systems of 1950s vintage Fords pretty much begged to be upgraded to 12 volts, and the switch from generators to alternators in late 1964 was a good one, but for the most part, classic Fords were no less reliable than anything else of the day. And as sunny-day drivers today, they're more than fine. In fact, we know of [one gentleman who used a 1930 Model A as his daily driver for a whole year](#) with fewer problems than most people have with a 10-year-old used car.

Ignition Timing – Part 3

Physical Timing

By Lynn Sondenaar, Brightwood, Oregon

1. Common sense safety steps:

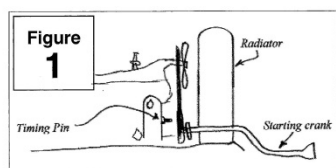
- a. Emergency brake on
- b. Gas valve shut off
- c. Ignition key off
- d. Gearshift in neutral position
- e. Spark fully retarded
(In the upward position)

2. As listed in Part 2 under Specifications
(Be sure that the following gaps are set):

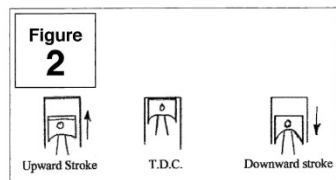
- Spark plug .035
- Breaker points .020
- Rotor to distributor body .025

3. Remove #1 spark plug (closest to the radiator.)

4. Remove timing pin and place the rounded end back into the timing cover where the pin was unscrewed. **Fig. 1**



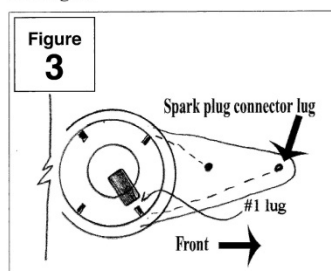
5. To help the novice understand the relationship of top dead center (T.D.C.) carefully insert a long wooden dowel (chopstick or even a paper/plastic straw) into the #1 spark plug hole at an angle so it reaches into #1 cylinder. With the starting crank inserted, very slowly rotate the engine. As the #1 piston is rising you can actually feel it traveling to T.D.C. When it reaches T.D.C. there is a millisecond of time where it stays flat before starting the downward stroke. (**Fig. 2**) Remove the dowel and start the actual timing process again. Step 5 only needs to be completed once so you have a better understanding of piston travel.



6. Place pressure on the timing pin and slowly rotate the engine with the starting crank. When the piston is at T.D.C. the timing pin will drop into an indent on the timing gear. Note: Reproduction timing gears are not always drilled to the depth of the original Ford gears. If installing a new timing gear use a 5/16-inch drill bit and drill the indent an additional 1/16 inch in depth. This will let you find the indent faster and easier. Use caution and a variable speed drill.

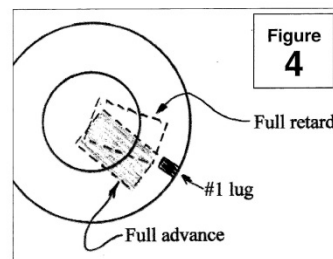
7. Now that T.D.C. is located, remove the distributor body, cap and rotor. Loosen the distributor cam using a distributor cam wrench (A-12210) and a straight blade screwdriver. Replace the distributor body and rotor.

8. Position the rotor so that it makes contact with the #1 lug in the distributor body. See **Fig. 3**.



9. The overlap between the rotor and distributor contact needs to be checked. Slightly tighten the distributor cam so when the spark lever is advanced (downward on the steering column) the distributor cam will turn. Refer to **Fig. 4** for the correct contact relationship. In the full retard position the rotor has a direct air gap contact with the trailing edge of the distributor body lug. In full advance position the rotor has direct air gap contact with the leading edge of the distributor lug.

10. The distributor cam might need to be loosened and adjusted to reach the setting in **Fig. 4**. When correct, move to step #11.



11. Tighten the distributor cam and replace the distributor body, cap, and rotor.

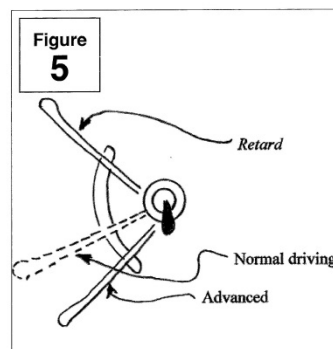
12. Remove the timing pin and tighten it back into the timing cover.

13. Remove the starting crank.

14. Replace the #1 spark plug and connector.

15. Your Model A should now be correctly timed, and for normal driving the spark lever would be 3/4 of the way down on the column. **Fig. 5**

16. As you gain knowledge and experience, *dwell of the points* will be a better factor in timing. It might be Part 4!



Pacific Northwest Model A Picnic - June 13, 2015



Pacific Northwest Model A Picnic - Grand Prize Winners



This Model A Didn't Make the Picnic - Broken Crankshaft



Northwest Regional Meet Photos- Walla Walla, WA



Fun Friday Thirties and Forties Kodachrome Photos



Another photo from Pie Town, New Mexico by Russell Lee taken in 1940 showing a scene on one of the unimproved roads there. This Model "A" Ford is one of the first Fordor Sedans built starting in mid-1928 and is a Model 60-A that is called a *Leatherback*. This body style built for Ford by the Briggs Manufacturing Co. featured a brown artificial leather roof covering with a pebble-grained surface finish.



This photograph taken during 1940 in Colorado at harvest time by Russell Lee shows farm workers cars next to a stack of hay drying. In the image, we see a pair of 1933 or 1934 Ford Sedans, one clean and the other that is quite dirty. The two sedans on either side, we will let our readers identify.

Source: Theoldmotor.com

International Model "A" Day

September 19, 2015

Museum Open 9 - 5

Action 10 - 2

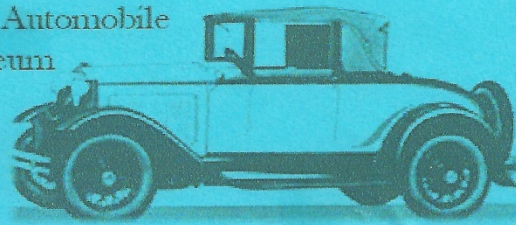
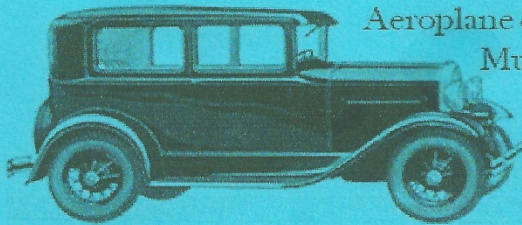
Hamburger &
Hot Dog Lunch
\$7

Celebrate at

Fun Activities
All Day



Western Antique
Aeroplane & Automobile
Museum



Registration: \$10 entry fee per car (Model A or Model T)
(Includes 1 or 2 people museum admission.)

General Admission: \$14 adults, \$12 seniors, \$6 kids

Prizes include: Most Senior Driver, Youngest Legal Driver,
Driver Who Came the Longest Distance, Best In Show, etc.



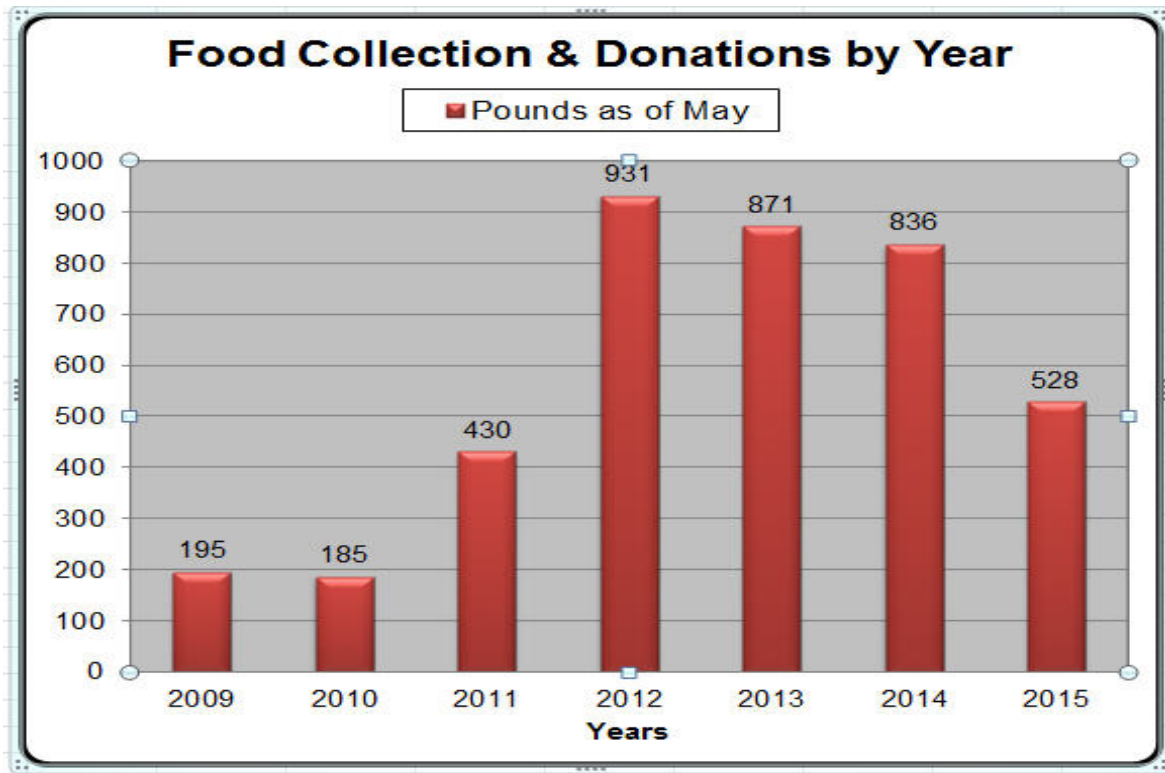
1600 Air Museum Road, Hood River, OR 97031

Information & Registration: (541) 308-1600

www.waaamuseum.org



Community Service - Food Donations



For Sale

To place an "Ad" send your information to rrusunen@comcast.net, or call Bob Rusunen at 360-828-5317

Edward McCallum has passed away, so his 1921 Model T and 1930 Model A are for sale. Jerry Lane has info on the details



Support Our Area Suppliers

C'S AUTO MACHINE SHOP

- FLYWHEEL GRINDING
- RESURFACING
- BORING
- THERMAL CLEANING
- ROD REBUILDING
- BLOCK DECKING
- VALVE GRINDING
- ENGINE REBUILDING
- KNURLING
- PIN FITTING
- PRESS WORK
- ROTORS & DRUMS

JIM
574-4934

OPEN M-F, 8am-6pm
800 NE 86th Street
Vancouver, WA 98665

EDM
SPECIALISTS IN
REMOVING BROKEN TAPS,
DRILLS, STUDS & EASY-OUTS

We Save You Money www.CostLessAutoParts.net

Cost Less Auto Parts™

"NO EXCUSES, Get it done!"

Orchards 360-254-5710	Hazel Dell 360-695-4423	Kelso 360-353-5956
---------------------------------	-----------------------------------	------------------------------



HART RADIATOR
Complete Radiator Service

501 Grade Street, Kelso
Fax 360-425-1189

*Auto, Truck & Industrial
Radiators, Heaters, & Air Conditioners*

360-425-6220

Doug Hart
360-430-3615 Cell

Allen Hart
360-430-9169 Cell

Benny Bennett

Holly Bennett



4219 St. Johns Rd NE • Vancouver, WA 98661 • (360) 993-0284
www.bennyspizzacafe.com



Jenifer Scott
Assistant Manager

303 E 15th Street
Vancouver, WA 98663
Telephone 360.694.8584
Fax 360.694.8843
amr5167@fedex.com

Amanda Uthe
RustyLugParts.com

**Rusty Lugs
Rod's & A's**

Open: M-F 9am-5pm
Formerly:
Floyds Model A Parts

8021 NE 142nd Ave
Vancouver, WA 98682
p. 360-887-3346
rustylugparts@gmail.com

Happy Independence Day

Volcano View Newsletter
Bob Rusunen, Editor/Webmaster
3720 NW 116th Street
Vancouver, WA 98685



Courtesy from MAFCA – “A” of the Day photos