



**Volcano A's, PO Box 970, La Center, WA 98629**

[www.volcanoas.net](http://www.volcanoas.net)

Meeting: Church of the Nazarene - 16850 NE Fourth Plain Blvd, Vancouver, WA - Second Monday of Month - 7:00 PM

Guys breakfast meeting every Wed. (7:00am) at Hockinson Café, 219 NW 20<sup>th</sup> Ave, Suite 100, Battle Ground, WA

Guys lunch on Fridays (11:30 am) at Benny's Pizza & Café on 4219 St Johns Rd NE, Vancouver, WA

**Volume 5 Issue 7**

**July**

**2016**

*2015 MAFCA Newsletter Certificate of Merit*

*2015 MAFCA Website of the Year*

*2013 MAFCA Newsletter of the Year    2013 MAFCA Website of the Year*

### **2016 Club Officers**

**President:**

Jerry Lane - 360-263-6980

[northforkmuseum@gmail.com](mailto:northforkmuseum@gmail.com)

**Vice President:**

Lynn Mattingley - 503-753-1363

[lynnmattingley@aol.com](mailto:lynnmattingley@aol.com)

**Treasurer:**

Linda Willey - 360 687-0916

[lindawilley@mac.com](mailto:lindawilley@mac.com)

**Secretary:**

Sherry Rusunen - 360-828-5317

[rrusunen@comcast.net](mailto:rrusunen@comcast.net)

**Member at Large:**

Leonard Willey - 360-687-0916

[lindawilley@mac.com](mailto:lindawilley@mac.com)

**Past President:**

Jack Dusenberry - 360-256-0149

[jdusie@comcast.net](mailto:jdusie@comcast.net)

**Editor/Webmaster:**

Bob Rusunen - 360-828-5317

[rrusunen@comcast.net](mailto:rrusunen@comcast.net)

\*\*\*\*\*

Articles and contributions are encouraged and may be used as space permits. The deadline for all articles is the 20th of the preceding month. The Volcano View is a monthly publication of the Volcano A's Chapter - MAFCA E-mail all proposed articles to: [rrusunen@comcast.net](mailto:rrusunen@comcast.net).

### **Photo of Month**

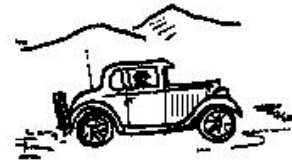


Lane's Forging Creek

If you are planning to participate with the Club in the Ridgefield 4<sup>th</sup> of July parade, please be sure that you are down at Ridgefield's Abrams Park by 9:30 am.



## ***President's Note*** ***June 22, 2016***



We arrived home Monday the 20<sup>th</sup> at 6:00 PM after enjoying a very memorable four-day trip to Pendleton Ranch Country in the foothills of the Blue Mountains. Jack & Shari Remillard, our hosts did an outstanding job of planning and organizing an amazing tour through the mountains, a little bumpy at times through potholes and over boulders. There was one pothole, I think they called it "the puddle" was big enough to hold two cars. The area had received a good rainfall prior to our arrival filling the potholes to capacity and settling the dust, which was a blessing.

Scott & Bonnie Sager were our hosts at their ranch property and cabin with many interesting ranch buildings. Their home is completely off the grid with solar, generator, wood & propane & spring fed water system. Scott & Bonnie did all the cooking which was excellent & showed us the skills of being the best camp hosts in the West. The Saturday evening entertainment was the Severe Family from Pendleton who sang & played songs about western life. On Sunday evening around the campfire Bonnie spoke in great detail of the area history which was very interesting.

Many, many thanks to the Remillard's and the Sager's for a very memorable Rough Rider Tour, we will all cherish these memories and remember them for the rest of all lives.

Members from the Volcano A's attending were Jerry & Dian Lane, John & Diana Carlile, Leonard & Linda Willey, Ken Holtmann, Linda Neilsen, Mike Blick & Roger Green.

For those of you attending the Ridgefield 4<sup>th</sup> of July Parade, please plan on being on location in Abrams Park by 9:30 AM for a great event always enjoyed by thousands, especially the kids.

Also mark your calendars on July 9<sup>th</sup> at 3 PM for a very special occasion celebrating the 60<sup>th</sup> anniversary of Bob & Carma Huset at North Fork Museum; 611 NE 359<sup>th</sup> Street La Center. It's casual; it's a buffet and no gifts, just your presence.

**Jerry**

---

### **Committee Chairs**

**Community Service:** Joyce  
Swartz/Tom Ryan

**Garage Workshop:** Tom Pagel

**Library/Historian:** Terry Findley

**NW Regional Rep:** Jack Dusenberry

**Public Relations:** Dian Lane

**Refreshments Coordinator:** Nancy  
Wooldridge

**Sunshine:** Pat Dusenberry

**Tour Director:** Lynn Mattingley

#### **Front Page Photo**

Lane's Tudor Model A forging a  
creek during the Rough Riders tour  
to Eastern Oregon

Note: Periodically some materials printed in our newsletter may have been borrowed from other club newsletters. We thank other clubs for sharing their newsletters with the Volcano A's. Also, when sources are known they will be included

## **Volcano A's General Membership Meeting Minutes**

### **June 13, 2016**

**CALL TO ORDER:** 7:00 pm by President Jerry Lane.

**GUEST:** Dixon Lee was introduced. He owns a 1929 2-door.

**TOURS:** Lynn Mattingley reported the next tour is the Ridgefield 4<sup>th</sup> of July Parade. Details will be provided later in the meeting.

**TREASURER:** Linda Willey gave the financial report.

**EDITOR/WEBMASTER:** Bob Rusunen had nothing new to report.

**COMMUNITY SERVICE:** Joyce Swartz said 89#s of food was collected last month for the Food Bank bringing the year total to 473#s. Gary Swartz announced that FISH Food Bank needs help to sort food on Wed. June 22<sup>nd</sup> at 9 am. A sign-up sheet was passed around for volunteers.

**SUNSHINE:** Pat Dusenberry had a thank you note from Marylan Kelly for flowers following her back surgery, which was read by President Jerry Lane.

**LAVA LADIES:** Linda Willey reported the trip to the Oregon Gardens was very enjoyable!

**OLD BUSINESS:** John Carlile reported the Evergreen Model A'ers and the Galloping Gerties are considering hosting either the 2017 or 2018 Regionals. More to follow  
The minutes from the last meeting were approved and seconded by John Carlile and Bob Rusunen.

**NEW BUSINESS:** Pendleton Roughriders trip is set to go. Meet at 9 am at exit 14.  
July 4<sup>th</sup> parade in Ridgefield is set to meet at Abrams Park by 9:30 with the Salmon bake following in the Community center.  
July 9<sup>th</sup> is the Huset's anniversary party at the Museum at 3pm. All are invited!!  
Steve Pargeter showed a Volcano A's license topper which he made as an idea we could do for the club. Anyone interested could spearhead this project.  
Tom Ryan featured a book, 4-Bangers & Me by Jim Breeley, which he thought we should purchase for our library. A motion was made and seconded to purchase it by Ron Hall and Leonard Willey. It passed unanimously.

**RAFFLE:** 50/50 was won by Gary Swartz in the amount of \$32.00.

**REFRESHMENTS:** Jennie Ryan and Dian Lane served Vegetables with dip and fresh fruit!!

**ADJOURNED:** Meeting was adjourned by Jerry Lane.

Submitted by Sherry Rusunen.

## Member Celebrations



### **Anniversaries**

- 4 Scott & Lisa Deane
- 10 Bob & Carma Huset
- 12 Martin Binder & Kay Scott
- 18 Leonard & Linda Willey
- 26 Dickson & Bibbi Lee
- 27 Ken & Louise Berg

### **Happy Birthdays**

- 6 Donald Olson
- 9 Carma Huset
- 13 Pat Cox
- 16 Wayne Thompson
- 22 MJ Peden
- 24 Kay Scott (Binder)
- 30 Thomas Foster

## Refreshments

**July:** Linda Willey & Pam McClafline

**August:** Club Picnic @ the Lane's

**September:** Sandra Guyot & Jann Jones

**October:** Becky Blick & Dianne Ernest

**November:** Roberta Emerick & Marylan Kelly

**December:** Holiday Potluck

## Factory Photo of the Month



1928 60-A PT Fordor Sedan

## Welcome New Member

**Lee, Dickson & Bibbi**

144 W Canyon View Dr.

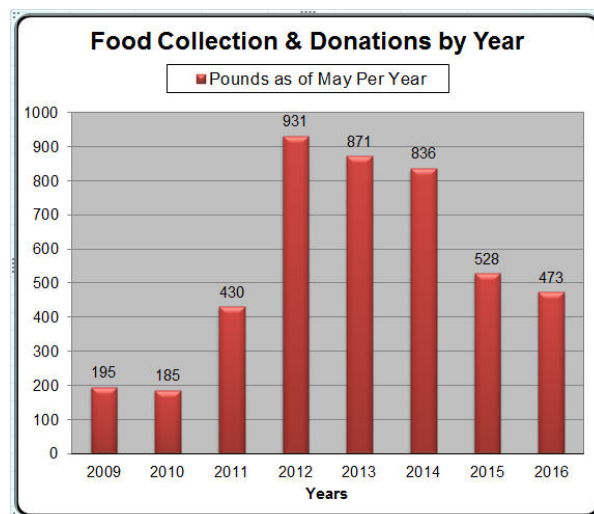
Longview, WA 98632

360-425-8630

[leesmeade@gmail.com](mailto:leesmeade@gmail.com)

1929 Tudor

## Community Service





## Future Events

Jul 9	Bob & Carma Huset's 60 <sup>th</sup> Anniversary @ the Lane's Museum
Jun 24-26	36 <sup>th</sup> Annual Swap Meet, Brooks, OR
Aug 20	Lava Ladies - Pit Stop Coffee Stand, La Center, WA
Aug 27	39 <sup>th</sup> Annual LeMay Car Show, Tacoma, WA
Oct TBD	Lava Ladies - Babies in Need - Rocky's Pizza, Battle Ground, WA
Oct 14-15	PIR Fall Auto Swap Meet, Portland, OR
Dec 12	Christmas Dinner & Auction at the Lane's Museum

## Tours

Jul 4	July 4 <sup>th</sup> Parade, Ridgefield, WA - meet at 930 am
Sep TBD	Annual President's Tour
Nov 11	Ft. Vancouver Veteran's Day Parade, Vancouver, WA

### 2016 National Awards Banquet Reno, Nevada

Hosted by The Sagebrush Chapter



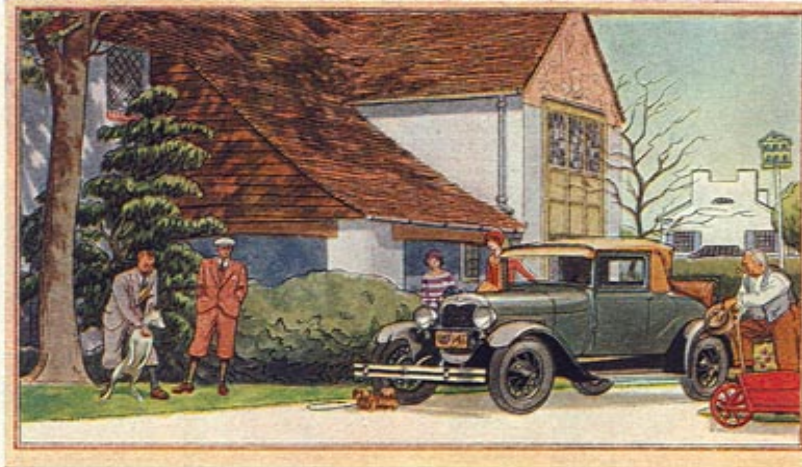
2016 National Awards Banquet  
Reno, Nevada - Peppermill Resort  
December 5-8, 2016  
\$59 per night, if booked by November 2  
Come learn the history of the Lincoln Highway  
Enjoy a private Era Fashion dinner party at the  
National Automobile Museum  
Visit Virginia City, home of Christmas on the Comstock



The Elegance of Spring, simply amazing

## Ford Advertisement

*Hearst's International-Cosmopolitan for June, 1928*



### The new Ford has been built to endure

THE remarkable performance of the new Ford is the direct result of the quality that has been built into every part.

It has beauty of line and color because beauty of line and color has come to be considered a necessity in a motor car today.

Yet even more important than this outside beauty is the strength, efficiency and beauty of those parts which are on the inside—those vital mechanical parts which are the very heart of value and performance. It is well to look to this mechanical beauty when you buy an automobile.

An example of the quality that is

built into the new Ford is the use of steel forgings instead of malleable castings and steel stampings. They are used throughout the chassis, except, of course, for the engine castings.

More steel forgings, in fact, are used in the new Ford than in almost any other car regardless of price.

Added strength, quiet and reliability also come from the number of electric weldings used in the new Ford. By the use of these weldings, one-piece parts of great strength replace those formerly made up of several parts which were bolted, riveted or soldered together.

Some of the other features which show the strength and quality that have been built into the new Ford car are the steel bodies; the aluminum alloy pistons; the carbon chrome nickel alloy valves; the statically and dynamically balanced crankshaft which is built to withstand a twisting stress up to 60,000-inch pounds; the multiple dry-disc clutch and the standard selective gear shift transmission; the low center of gravity and minimum unsprung weight which combine with the Houdaille hydraulic shock absorbers and the new transverse springs to make the new Ford such an easy-riding car; the Triplex shatter-proof glass windshield; the new steering gear which prevents road shocks from being transmitted



to the hands of the driver and is unusually strong because the column and the housing of the steering gear mechanism are welded into a single all-steel unit; the mechanical four-wheel brakes; the seamless, all-steel torque tube; the new one-piece, welded, steel-spoke wheels; the three-quarter floating rear axle; and the all-steel rear axle housing.

There are definite reasons, therefore, why the new Ford is more than a new automobile—more than just a new model. It is the advanced expression of a wholly new idea in modern, economical transportation.

The Roadster sells for \$385; the Phaeton for \$395; the Coupe for \$495; the Tudor Sedan for \$495; and the Sport Coupe, with wide, substantial rumble seat, for \$550. (All prices are F. O. B. Detroit.)

*Shown below is the instrument panel on the new Ford. It is made of steel, beautifully finished in satin nickel. Instruments are in convenient clever leaf cluster, illuminated by light in center.*



*The new Ford is a great car to drive in traffic because of its quick acceleration, easy steering, short turning radius, and the safety of its four-wheel brakes. Gears shift easily and silently because of the multiple dry-disc clutch and standard selective gear shift transmission.*





## Model A ERA Clothing Fashions

THE SATURDAY EVENING POST

In the good old sum

# absorbers for active summer feet



For those glancing to the feet... a feeling never had a halting moment... quick, sure and graceful... that step that sets the... Keds make all the difference in the world.

**Keds "Shoemaker"**

A rubber shoe, made from the 45-point sole. "Shoemaker" is made from the best and most standard leather, finished in glass with a special oil proof of water-tight. Sprinkled with rubber, it's a shoe of promise.



**Keds "Moccasin"**

The most popular shoe for the summer is the moccasin shoe. It's made from the best and most standard leather, finished in glass with a special oil proof of water-tight. Sprinkled with rubber, it's a shoe of promise.



**Keds "Moccasin"**

The most popular shoe for the summer is the moccasin shoe. It's made from the best and most standard leather, finished in glass with a special oil proof of water-tight. Sprinkled with rubber, it's a shoe of promise.

Each of the above problems is back to the water standard of excellence—each gives the water standard in the world's best shoes and most widely worn shoes and play shoes—Keds.

Keds are priced at \$1.00, \$1.25, \$1.50, \$1.75, and up to \$1.99. The more you pay, the more you get—but Keds value what you pay.

United States Rubber Company

# Keds

MADE IN U.S.A.

Source: Phillip Lenssen at [vintageadbrowser.com](http://vintageadbrowser.com)

## **Battle Ground Princesses 2016**

The Battle Ground float and Princesses won the Royal Rosarian Award for best craftsmanship and workmanship in the Portland Grand Floral Parade for 2016





## **Rough Riders Tour Pendleton, Oregon - June 18-19, 2016**

Photos provided by Diana Carlile

1st day - We've arrived at the cabin!

Cabin - The Sager's off the grid cabin, they live here full time Carlile - John & Diana  
fording the creek front of line shack - An old line shack now a guest house Jack Remillard  
- our Rough Rider leader Ken - Ken Holman's car ready to go Lane forging creek - Jerry &  
Dian forging the creek Lane - On the trail line shack - side view of the line shack, it's just  
as cute inside monument - Stopped at a monument commemorating the Bannock War  
morning - The night before was 24 degrees, the morning sun is warming us all up post &  
rider - this type of fencing is called post & rider, not very common and very unique Sager -  
Welcome gate into the Sager's Scenery - Just some of the fantastic country we traveled  
Scott Sager & Randy Severe - Scott Sager introducing our evening entertainment, Randy  
Severe & family Scott - oops this is a duplicate the guys - Relaxing after a long bumpy  
drive Ukiah - gas stop valley homestead - a picturesque setting for this homestead  
Willey's - Leonard & Linda forging the creek.







***That's it folks!***

## **Tech Q&A - Tips from MAFCA Members**

### **Manifold Gasket**

#### **Question:**

An article was published recently in both club magazines that recommends using Ford steering gear grease in the Model A steering box. After fighting with a leaky box through three rebuilds this seems like a real good idea, but every source I have read states emphatically that oil, not grease must be used in the box. Also, in "Patent Cures" a while back the author suggested using a grease-oil mix in the box. Could I have your thoughts on this, please?

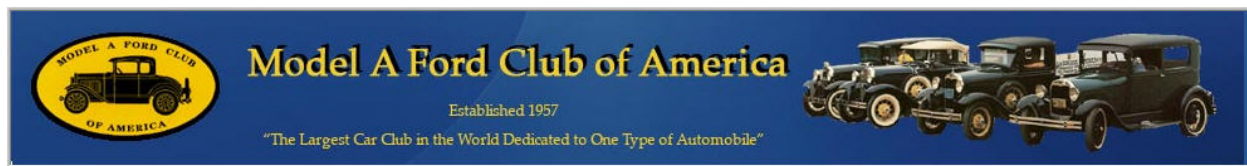
#### **Answer:**

That article has confused many people. I am in complete disagreement with the article. The grease talked about was formulated in 1963 and for steering gear boxes of that time. There was nothing indicating that it was appropriate for the square cut Model A type steering gear. Most gear boxes after 31 were helical cut and worked well with grease. The square cut two tooth sector will push the grease away from the worm and sector and cause more wear and eventually binding. There is only one way to fix your steering box oil leak. The two tooth worm and sector type (used primarily in the 1930/31 Model A's) has an after market end plate with tube that replaces the original end plate. The tube extends above the oil level in the gear box to prevent oil from leaking out the end of the steering column around the horn rod. The second place it leaks is around the sector shaft at the frame connection. This can be corrected by putting a new bushing in the sector housing.

Either install a new sector shaft or have your sector shaft turned down to eliminate wear in the shaft. Then install an oversize ID bushing and ream and hone it to fit the shaft. Must obtain a fit of .001 to .0015" of shaft to bushing. Most sector shaft leaks are because there is from .002 to .005 clearance between shaft and bushing. A worn sector shaft will always leak. If someone has put needle bearings in the sector housing you will never get an oil seal. The needle bearing allows too lateral movement and causes the oil seal used with it to pull open, allowing oil to escape. Finally, place an "O" ring around the end of the sector shaft before bolting to the frame. This is the way I do it and have never had a problem with a steering oil leak. The 1928/29 with the 7- tooth worm and sector is fixed the same way at the sector shaft. At the end of the steering column there is a rubber seal that can be tightened around the horn rod. Hope this helps you. Let me know how it works out. -

**Les Andrews**, 1998 Technical Director





Header from the MAFCA Website

## MAFCA President's Page - Alex Janke - June 2016



We just returned from the Northern California Regional Group Roundup in Modesto, California. It was a fun filled three days with vehicle and fashion judging, a grand tour, numerous seminars, and of course lots of wonderful Model A fellowship. The drive to the event was also fun - part of the joy of owning a Model A Ford is driving it.

The National Convention in Loveland, Colorado takes place in just a few weeks. There were 550 registrations when I last looked. That means well over 1,000 attendees and around 500 Model A Fords - maybe more. My wife and I are excited about driving our Model A 1,500 miles to the convention and of course I am servicing the little coupe for the trip. I hope you join in the fun.

Your Board of Directors meets in Loveland and we will finalize the budget along with other actions. All attendees are invited to attend and see your Board of Directors in action. I have mentioned before the budget is getting tighter and tighter. We changed the printer for The Restorer magazine which will both save money and allow us to provide more services to our membership in the future. The world of printed publications has changed dramatically in the last 10 years with costs actually going down thanks to new technology.

There is still room for additional candidates for the Board of Directors. The application deadline is June 15th so if you are thinking about running, get your application in now. MAFCA is an organization of volunteers. Without individuals willing to serve on the National Board, there would be no MAFCA. Just as you would not have a chapter if people were not willing to serve as officers and coordinators of local activities the same goes for MAFCA. Please consider joining the Board - it is fun and very rewarding.

Signups for the National Awards Banquet in Reno, Nevada on December 5 to 8 are now available. There is a [short video](#) showing you some of the highlights for this event. Take a minute to look at the video, and then sign up. This is a chance to see Reno, Nevada at an ideal time of year, great weather, low room rates, and another chance for Model A fellowship.

The September meeting of the Board will take place in Hickory Corners, Michigan at the Gilmore Museum. This will be in conjunction with Model A day at the museum. It turns out several members of the Board will be there for activities at the museum, so it was more cost effective to hold the meeting there, rather than have everyone travel to MAFCA Headquarters in California. Again, we are looking for ways to hold costs down. Model A day at the Gilmore will feature seminars, special exhibits, and of course a lot of Model A vehicles and friends. If you are in the area, plan to attend, September 16 and 17, 2016.

Please keep contacting the Board with your emails and phone calls. We all enjoy talking with you and hearing your ideas and suggestions. Help us provide you the best possible service. I can be reached at [president@mafca.com](mailto:president@mafca.com) and I will respond.

Hope to see you on the road soon.

### Information

The **Model A Ford Club of America, Inc. (MAFCA)** is a California non-profit corporation and a national historical society dedicated to the restoration and preservation of Model A Ford vehicles as manufactured from 1928 through 1931.

MAFCA's members are dedicated to the restoration, preservation, and enjoyment of Ford vehicles of that era. MAFCA is the largest club in the world dedicated to one make of automobile. Volcano A members are urged to join the Model A Ford Club of America, Inc. Visit the MAFCA website for a membership application. Dues are \$40 yearly and include a subscription to The Restorer.

#### **VOLCANO A's - Ford Model A Club** P O Box 970 La Center, WA 98629

The Volcano A's is a non-profit organization dedicated to the restoration and preservation of the Model A Ford. Membership is open to all persons that are interested in the Model A Ford.

Membership in MAFCA National Club is optional for all members except 'Officers' of the Volcano A's, who must be MAFCA members.

Alcoholic beverages are not served at club functions. Any member choosing to partake of such beverages during club functions shall stand accountable for his own actions. Neither Volcano A's nor fellow officers shall be held responsible.

Meetings are the 2<sup>nd</sup> Monday of each month at 7:00 p.m. at the Fourth Plain Church of the Nazarene - 16807 NE Fourth Plain, Vancouver.

Annual dues are \$20.00

Please print & complete this Application Form and send \$20.00 to above address

#### **NEW MEMBER INFORMATION**

Date: \_\_\_\_\_ Year Joined: \_\_\_\_\_

Please complete the following information for our Secretary

NAME \_\_\_\_\_ BIRTHDAY \_\_\_\_\_

SPOUSE \_\_\_\_\_ BIRTHDAY \_\_\_\_\_

ADDRESS \_\_\_\_\_ ANNIVERSARY \_\_\_\_\_

CITY, STATE, ZIP \_\_\_\_\_

TELEPHONE \_\_\_\_\_ EMAIL \_\_\_\_\_

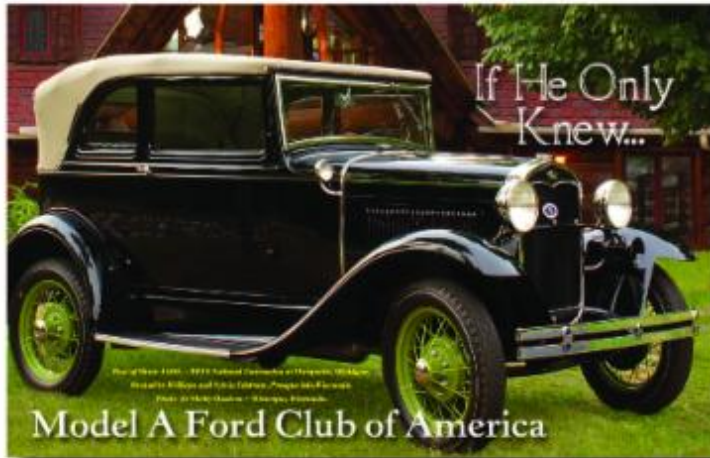
Other Family Members living at home

Names \_\_\_\_\_ Birthday \_\_\_\_\_

CAR Information: (Model, Year, Body Style) \_\_\_\_\_

Revised December 1, 2015

## 2016 MAFCA Membership Program



History • Restoration Guidelines  
Technical • Touring • Era Fashion

### JOIN TODAY!

**New members will be offered annual  
membership at the regular price of \$40  
with their second year for free!**

*Offer good through August 2016*

### Membership Application

Our multi-award-winning  
bi-monthly publication,  
*The Restorer* is loaded with  
great material for the Model  
A owner! A subscription is  
free with your membership!

Name: \_\_\_\_\_

Spouse: \_\_\_\_\_ Chapter: \_\_\_\_\_

Address: \_\_\_\_\_

City, State, Zip: \_\_\_\_\_

Telephone: \_\_\_\_\_ Email: \_\_\_\_\_

*I grant MAFCA permission to publish my phone number in our roster: Yes \_\_\_\_\_ No \_\_\_\_\_*

US Membership Annual Dues are: \$40.  
**Includes six issues of *The Restorer* magazine!**  
*Mail check payable to MAFCA or for Visa/Mastercard*

Card Number: \_\_\_\_\_ Exp. Date: \_\_\_\_\_ CVV Code: \_\_\_\_\_

Signature: \_\_\_\_\_

Mail to:  
Model A Ford Club of America  
250 S. Cypress St.  
La Habra, CA 90631-5515

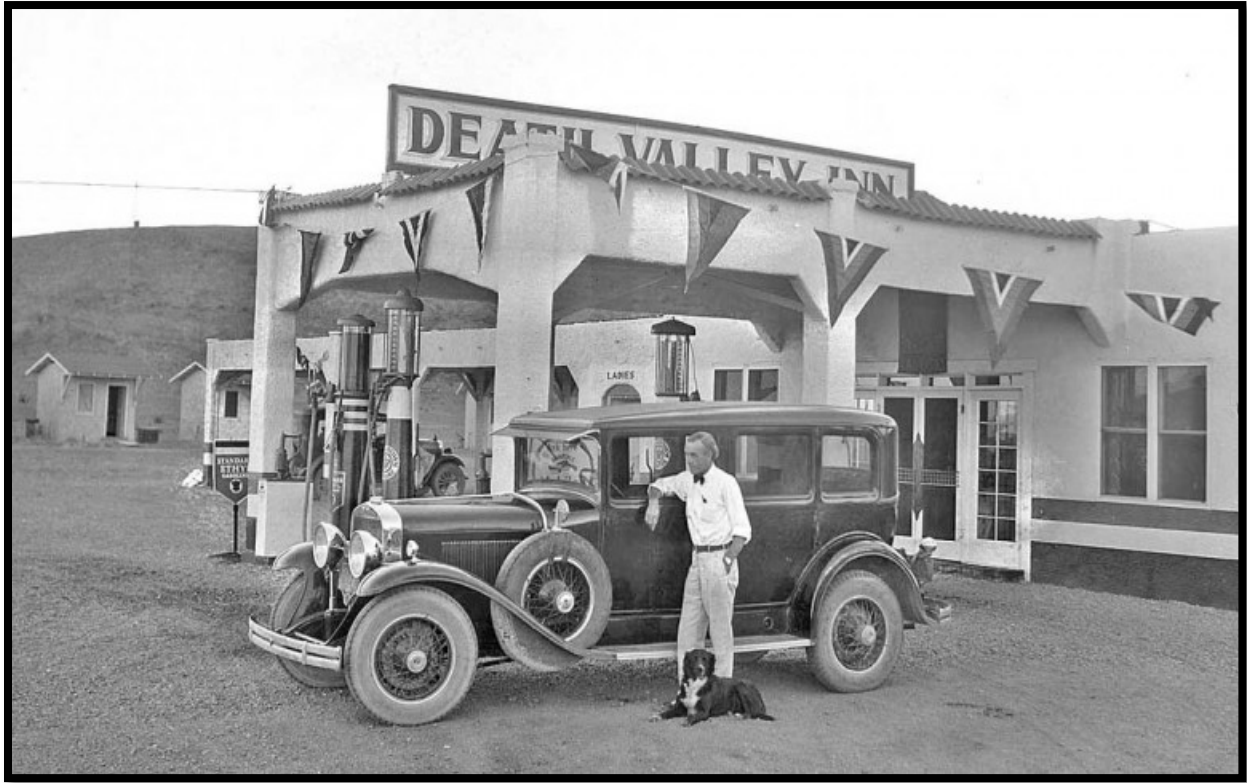


Toll free 866-379-3619 or join on-line at [www.mafca.com](http://www.mafca.com)





## Death Valley Gasoline, Food and Accommodations for Tourists



Death Valley is located in Eastern California near the Nevada border and despite its scenic beauty it is both the hottest and driest area in the US. In addition, it is the lowest point in the country at 282 feet below sea level. The combination of all of these factors turned it into a tourist attraction as soon as reliable automobiles and modern roads were constructed.

Baker, California, a small town just south of Death Valley is located on Route 15 and has long been a base for travelers visiting the attraction. The opening of nearby Route 66 between Needles and Barstow in the twenties brought many more visitors to the region. Today, we take look at three facilities that catered to visitors in the area.

The late twenties lead image of the Death Valley Inn located in Baker appears to be a promotional photo with one of the popular Harley Earl designed 1927-'29 La Salles in the view with an attendant and dog in front of the gas pump islands. Standard Red Crown and Ethyl gasoline were available under the attached roof on the front of the Inn.

Source: The Old Motor.com

## **For Sale Items or Wanted**

To place an "Ad" send your information to [rrusunen@comcast.net](mailto:rurunen@comcast.net), or call Bob Rusunen at 360-828-5317

### **1926 Ford Model T For Sale**

2 door sedan with solid surface, rust only but solid and apart. It is moveable and may deliver. Asking \$3,500. Call 360-573-3318 or email [pagel4332@comcast.net](mailto:pagel4332@comcast.net)

### **Model A Parts for Sale**

4 ea Model A Mufflers - \$35.00/ea; 1 ea Model A Coupe Frame - \$100.00;  
1 ea 1928 motor needs to be rebuilt - \$50.00.

Rear end gear - \$30.00      Front Axle - \$20.00



Call: John Durr - 360-513-0961



## Support Our Club Suppliers

# A&B

## Radiator & Speedometer Service

*Also Specializing in:*  
A/C Service Heater Installation  
General Auto Repair

8411 E. Fourth Plain  
Vancouver, WA 98662

(360) 256-1560  
(360) 254-8329

Benny Bennett

Holly Bennett



4219 St. Johns Rd NE • Vancouver, WA 98661 • (360) 993-0284  
[www.bennyspizzacafe.com](http://www.bennyspizzacafe.com)

**Bob's**  
**PAINT LAND**  
HOUSEHOLD • AUTOMOTIVE • CUSTOM

Mark Stillman

1501 NE 99th St.  
Vancouver, WA 98665  
(360) 573-7133

[www.bobspaintland.com](http://www.bobspaintland.com)

## C'S AUTO MACHINE SHOP

- FLYWHEEL GRINDING
- RESURFACING
- BORING
- THERMAL CLEANING
- ROD REBUILDING
- BLOCK DECKING
- VALVE GRINDING
- ENGINE REBUILDING
- KNURLING
- PIN FITTING
- PRESS WORK
- ROTORS & DRUMS

JIM

**574-4934**

OPEN M-F, 8 am-6 pm  
800 NE 86th Street  
Vancouver, WA 98665

EDM  
SPECIALISTS IN  
REMOVING BROKEN TAPS,  
DRILLS, STUDS & EASY-OUTS

*We Save You Money*

[www.CostLessAutoParts.net](http://www.CostLessAutoParts.net)

# Cost Less Auto Parts™

**"NO EXCUSES, Get it done!"**

**Orchards**  
360-254-5710

**Hazel Dell**  
360-695-4423

**Kelso**  
360-353-5956

**DIVERSIFIED**  
WELDING WORKS, INC.  
*Industrial Welding and WaterJet Cutting*

**WILL BINNS**

P R E S I D E N T

[willb@diversifiedweldingworks.com](mailto:willb@diversifiedweldingworks.com)

360-576-0929 • 877-835-0724 • 360-573-0824 Fax  
8009 NE 19TH COURT • VANCOUVER, WA 98665



**HART RADIATOR**  
*Complete Radiator Service*

501 Grade Street, Kelso  
Fax 360-425-1189

*Auto, Truck & Industrial  
Radiators, Heaters, & Air Conditioners*

**360-425-6220**

Doug Hart  
360-430-3615 Cell

Allen Hart  
360-430-9169 Cell

RUSTY LUGS

SPECIALIZING IN MODEL A'S

Amanda Uthe  
Owner

360-887-3346

[Rustylugparts.com](http://Rustylugparts.com)

M-F 9am-5pm

8021 Ne 142nd ave

Vancouver, Wa 98682



***Volcano View Newsletter***  
***Bob Rusunen, Editor/Webmaster***  
***3720 NW 116<sup>th</sup> Street***  
***Vancouver, WA 98685***



Courtesy from MAFCA - "A" of the Day photos