



www.volcanoas.net

Meeting: Church of the Nazarene – 16850 NE Fourth Plain Blvd, Vancouver, WA - Second Monday of Month – 7:00 PM
 Guys breakfast meeting every Wed. (7:00am) at Hockinson Café, 219 NW 20th Ave, Suite 100, Battle Ground, WA
 Guys lunch on Fridays (11:30 am) at Benny's Pizza & Café on 4219 St Johns Rd NE, Vancouver, WA

Volume 3 Issue 6

June

2014



2014 Club Officers

President:

Jerry Lane - 360-263-6980
northforkmuseum@gmail.com

Vice President:

LeRoy Helyer - 360-666-1469
shelyer@comcast.net

Treasurer:

Linda Willey - 360 687-0916
lindawilley@mac.com

Secretary:

Becky Blick -360-687-5241
mblick53@aol.com

Member at Large:

Leonard Willey - 360-687-0916
lindawilley@mac.com

Past President:

Jack Dusenberry - 360-256-0149
j dusie@comcast.net

Editor:

Bob Rusunen - 360-828-5317
rrusunen@comcast.net

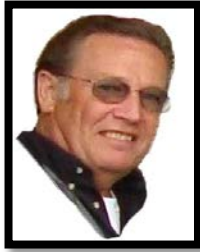
Photo of Month



1929 Panel Delivery 79-A



Set of Original Model A Tools



President's Note

May 28, 2014

Thank you Don & Ruby Knudson for the great get together at your place. Everyone had a great time. As most of you remember there was a great photo op with our car on the way to Boise, so this winter we went to Chico, CA and brought home a nice Fordor not knowing this would be Old Faithful Number Two. I think I should win first place for the entertainment committee. After working out some problems probably caused by inactivity, hopefully this car will tour with pride.

We are looking forward to the tour to the Pacific Northwest Model A Picnic West of Chehalis, As always for nine years this has been a premier event. Bring your smile and a potluck food item and have a great time.

Jerry

Committee Chairs

Community Service: Sherry Rusunen

Garage Workshop: Tom Pagel

Library/Historian: Terry Findley

NW Regional Rep: Jack Dusenberry

Public Relations: Dian Lane

Refreshments Coordinator: Nancy
Wooldridge

Sunshine: Pat Dusenberry

Tour Director: LeRoy Helyer

Webmaster: Bob Rusunen



June 15, 2014

Articles and contributions are encouraged and may be used as space permits. The deadline for all articles is the 20th of the preceding month. The Volcano View is a monthly publication of the Volcano A's Chapter - MAFCA
E-mail all proposed articles to:
rrusunen@comcast.net.

Front Page Photo

This 1929 Panel Delivery was a Craig's List local find by Terry Findley. Terry has completed some minor updates to his new vehicle addition.

Volcano A's General Membership Meeting Minutes

May 12, 2014

Jerry Lane opened the meeting by leading the flag salute.

GUESTS: Battle Ground Rose Float Princesses and John & Cheryl Potts.

PRINCESSES: Alice, Lexi, Bridget and Yana the 2014 Battle Ground Rose Float Princesses told us a little bit about themselves and shared some interesting history about the Battle Ground Float. Did you know that the float takes hours to get from Battle Ground to Portland because it can't travel over 25 MPH or the flowers would blow off? The girls asked for our support of the event by purchasing collectible Rose Festival Pins.

TOURS: LeRoy said our May tour to Knudsen's for a picnic was fun, fun time! The Pacific NW Picnic will be our June tour.

COMMUNITY SERVICE: Sherry informed us we donated 282 lbs in April for a year to date total of 565 - not bad... Great donations tonight, so many they wouldn't all fit in their Model A. She also mentioned that she will be in contact with an assisted living home and will get back to us with a date.

SUNSHINE: Nothing to report - that's good news!

LAVA LADIES: On display were items already donated for the regional baskets we are making. Baskets need to be completed by next meeting, so if you have anything to add please get items to Dian or Jerry prior to our June meeting. Also Lava Ladies will discuss June gathering during the seminar.

OLD BUSINESS: Motion was made to accept last meetings minutes as written. Motion was seconded and motion passed unanimously.

June 14th we will meet in La Center at 9AM to tour to Fletcher's picnic.

The proposed By Law changes as published in the last newsletter were read, motions made, seconded and motions passed unanimously.

CHERYL POTTS: Cheryl is putting together a tour to Cuba she felt would be of interest to our group. Going to Cuba feels like being in the 50's. No new cars have been allowed into Cuba for 60 years so it's amazing to see nothing but 50's cars in use. This may be the last opportunity to experience this as changes are coming.

REFRESHMENTS: Thanks to Ruby Knudsen and Marilyn Elvestrom for the cookies, meat platter and fruit.

50/50 RAFFLE: Cheryl Potts won \$38.

The men didn't have a seminar and enjoyed a good visit and the Lava Ladies gathered to discuss June 6th tour to Penzey's Spices in Beaverton.

Respectfully submitted by, Dian Lane



2 Bill & Rita Dietrich
 6 Jim & Betty Ulrich
 7 Lynn & Marilyn Elvestrom
 11 John & Dianne Earnest
 13 Greg & Shirley Weast
 16 Bob & Sherry Rusunen

Happy Birthday

6 Linda Freimuth
 7 Marlin Binder
 7 Amanda Spoelstra
 10 Rita Dietrich
 11 Gary Swartz
 12 Janice Bach
 14 Joanna Simpson
 17 Ardis Collins
 20 Richard Pargman
 20 Lynn Sondenaa
 27 Diane Schroeder

Refreshments

June: Dian Lane & Becky Blick

July: Carma Huset & Patty Sondenaa

August: Club Picnic

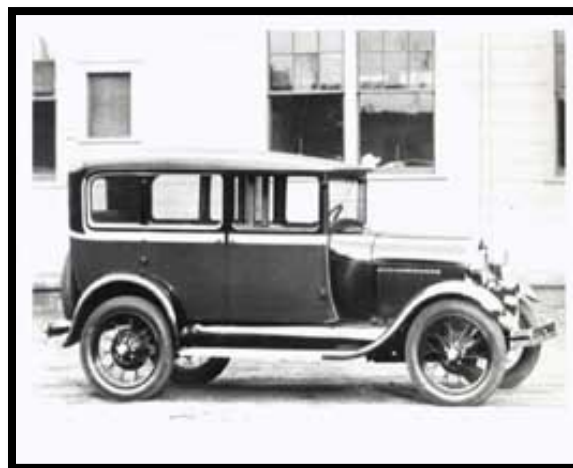
September: Sandra Guyot, Jane Hall & Dee LaBarre

October: Jennie Ryan & Joyce Swartz

November: Roberta Emerick & Dianne Earnest

December: Holiday Potluck at the Lane's

Factory Foto of the Month



1929 135-A Taxi

MAFCA 2014 National Conference Puyallup, WA



Trivia Knowledge Nugget

The banana cannot reproduce itself.
 It can be propagated only by the
 hand of man.



We invite you to a combined
50th Wedding Anniversary party for
Leonard & Linda Willey
and
Lynn & Marilyn Elvestrom.
July 12th - 12:30
at Jerry and Dian Lane's Museum.
The "Lewis River Dixie" Band will be
entertaining us. Please bring a salad!
No gifts. You'll surely enjoy this!



Reinstalling the Pan

This "A" Tip is really helpful if you have ever pulled the pan and reinstalled while the engine is still in the vehicle. This is normally a messy, dirty, and strenuous job and anything we can do to make it easier is a big help. These plastic carriers, called Snapups, are threaded into the block through the holes of the gasket and then into the block. Four are suggested but additional Snapups can be used, if desired. The oil pan can now be slid up onto the Snapups. When the pan goes over the shoulder, about half way up, the weight of the pan is now carried by the Snapups. You can now install the bolts and lock washers without the usual hassle of also supporting the oil pan. Snapups are manufactured by Felpro and are available at your local auto parts store.

Thanks to Frank Ambrose of the Joliet Region for this tip.



Photo 1. The nylon carriers are used to support the pan while installing it.

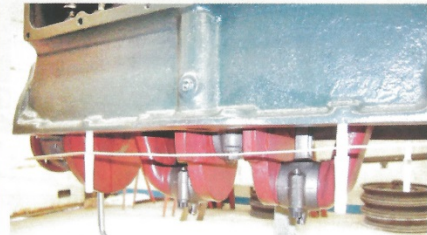


Photo 2 The gasket is held in place by the Snapups.



Photo 3 The pan is also held in position by the Snapups.

If you have an A-Tip or a Question Contact Ron Ehrenhofer, EMAIL marctech@modelarestorers.org or CALL 630-781-7883 or MAIL to Ron at 1914 N. Fernandez, Arlington Heights, IL 60004



Header from the MAFCA Website

MAFCA President's Page - Dan Foulk - May 2014

Shelby and I had not been home from the "A" Texas Spring Tour for even a week before it was time for more fun in our Model A. The Central California Regional Group (CCRG) held their annual "Jamboree" the first weekend in April. The Jamboree was hosted by the Paso Robles Model A Club and was a great success with over 170 registrations. All Jamborees are great and this one was no exception. A quote from the handout given to all attendees:

"The purpose of the CCRG is to conduct an annual regional meet. This meet, called a Jamboree, provides attendees, who may be unable to reach a MAFCA National Meet, an opportunity to exchange ideas, information, and parts for the Model A Ford car. A second purpose of the CCRG Jamboree is to provide greater opportunities for members to become better acquainted with a larger number of Model A owners. The Jamborees provide a greater scope than that of the individual clubs for greater fellowship among Chapter members. Each Jamboree also provides opportunities for attendees to drive their Model A's on tours of varying length."

The Jamborees are designed to be held over a weekend in the spring of each year. Hosting of the Jamborees is on a rotational basis. Every club takes their turn so the work is evenly distributed and your turn only happens once every 8 or 10 years. Currently, there are 10 clubs in the CCRG. Lately most Jamborees have included an optional day, usually Friday, so that additional tours can be taken if members choose to do so. Shelby and I drove our pickup to Paso Robles on Thursday afternoon over California Route 58 from Bakersfield to the coast. 58 is lightly used in that part of the state and it makes an excellent "Model A Road." We arrived in Paso Robles without incident.

On Friday, we joined a large group of other Model A'ers and drove to the quaint coastal town of Cambria. We enjoyed driving in a little rain, drove up the coast to Ragged Point which is a beautiful place overlooking the Pacific, had lunch there (outside, the rain had stopped), then had a scenic ride back to Paso Robles. Friday night we had barbequed steak dinner provided by the CCRG. After dinner, we danced the night away to music provided by local country band musicians, Monty Mills and the Lucky Horseshoe Band.

Saturday we started the day off with a "Running Board Swap Meet," then went on one of four offered tours to the Monty Mills Ranch (very quaint and interesting). Other tours offered were to Paso Robles antique stores, local wineries, and the Warbirds antique air museum. Shelby attended a Patti Jones seminar on era clothing that was held at the Pioneer Museum. At 5:30, the banquet started--an excellent meal. After dinner, the normal awards and hard luck stories were given out, followed up by a huge raffle of which I won NOTHING.

What I did win was the chicken from the Bakersfield Club. It seems that on the way back to Paso Robles from the banquet, my truck suddenly died (on busy Highway 101) and we found ourselves on the side of the road. It was dark, I had no flashlight, and not many people were around. Fortunately, I managed to get onto an off ramp and out of the main flow of traffic. Pretty soon another Model A'er stopped. Word traveled fast, "Hey, the President of MAFCA is broke down on the side of the road." The second Model A on the scene took my picture, so don't be surprised if you see a bunch of pictures floating around with me under the hood! We towed the truck back to the hotel and diagnosed the problem on Sunday morning. It was a bad coil. A replacement was soon had and quickly we were on our way back to Bakersfield. A GREAT WEEKEND!

So, what is my purpose in telling you about all of this fun? MAFCA has been largely unsuccessful at getting clubs to form Regions. There are only four Regions in MAFCA: three in California and then the Northwest Region, which encompasses the Northwest and Southern Western Canada. I strongly suggest that local clubs look into forming up a Region. I can't imagine a better way to enjoy your Model A, make new friends and, in general, have a great time.

If you have any questions, please do not hesitate to email me at president@mafca.com. My home phone number is (661) 393-2795 and my cell phone is (661) 303-1114. Keep 'em Crankin' 2014 President Dan Foulk

<u>Information</u>	<u>2014 Events</u>
<p>The Model A Ford Club of America, Inc. (MAFCA) is a California non-profit corporation and a national historical society dedicated to the restoration and preservation of Model A Ford vehicles as manufactured from 1928 through 1931.</p> <p>MAFCA's members are dedicated to the restoration, preservation, and enjoyment of Ford vehicles of that era. MAFCA is the largest club in the world dedicated to one make of automobile. Volcano A members are urged to join the Model A Ford Club of America, Inc. Visit the MAFCA website for a membership application. Dues are \$40 yearly and include a subscription to <u>The Restorer</u>.</p>	<p>Central - Midwest Meet June 9-12 - Tulsa, Oklahoma Host: Tulsa Model A Ford Club</p> <p>Texas Tour June 12-15 - Corsicana, Texas Host: Dallas Model A Club</p> <p>MAFCA National Convention July 14-18 - Puyallup, Washington Host: Gallopin' Gerties of Tacoma</p> <p>MAFCA National Awards Banquet December 3-7-Little Rock, Arkansas Host: 50th Anniversary Model A Club</p>

You Are Invited to the Ninth Annual Pacific Northwest Model A Picnic Saturday, June 14, 2014

The picnic will take place at 1354 Pleasant Valley Road, West of Chehalis, WA, and includes Model A's, pre-war, and classic automobiles. This year's theme will be "1936 Dust Bowl Okies on Route 66" and features the **Palm Court Dance Orchestra** playing Depression Era music. Everyone is encouraged to dress 1930s era.

What to Bring: Pot-luck food and folding chairs

Note

No hot-rods, street-rods, resto-rods, or rat-rods allowed in the Picnic/Exhibition area.

Ticket Activity

White: Tickets for the Grand prize will be given all antique and classic cars as they enter the covered bridge.
Green: Tickets for the door prizes can be picked up at the booth in the picnic area.
Red: Ticket for the Beam's Model "A" Pickup Decanter drawing will be sold at the booth in the picnic area.

Many thanks to Don Hufschmid from the Cascade Pacific Plymouth Club for donating the beautiful decanter.

Schedule of Events

11:30 am	Biplane arrives
12:00 Noon	Orchestra performs first half of program
	Intermission: Red ticket drawing for Beam Decanter
	Green ticket drawings for Door Prizes
	Orchestra performs second half of program
	Fashion Show
	White ticket drawing for the Grand Prize Pedal Car
	Biplane take-off

Facilities: Out-houses, water and washing facilities. Handicap parking available - ask parking attendant.

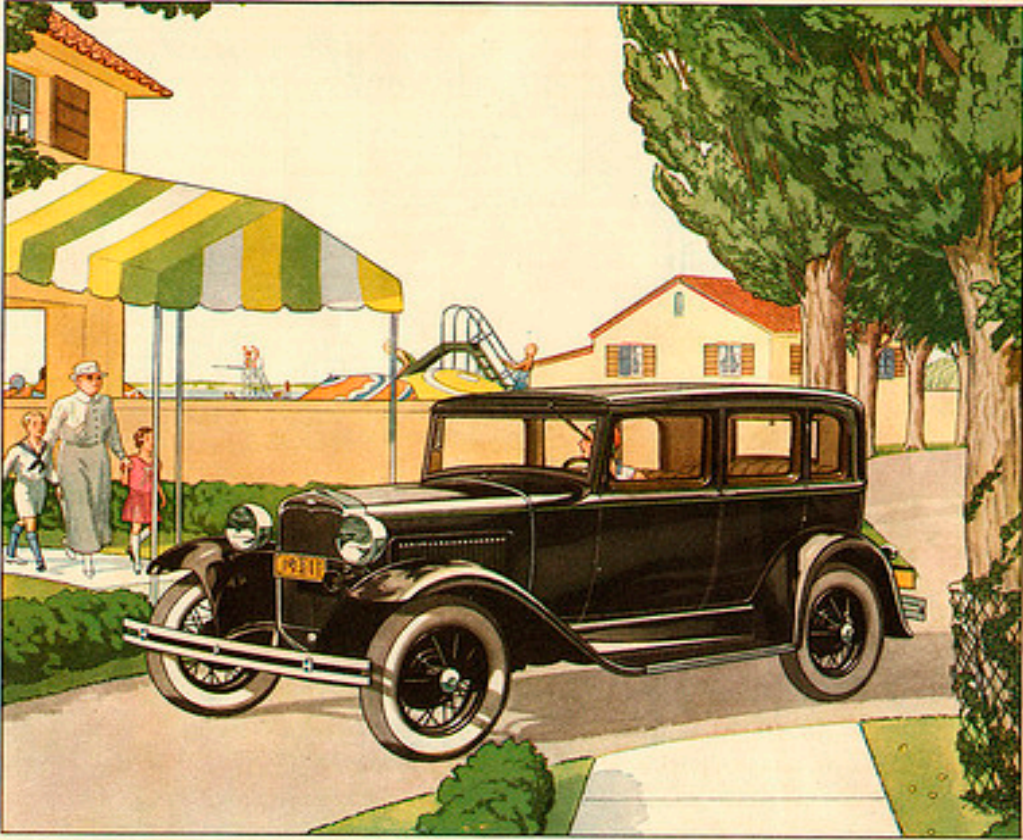
The hosts and sponsors of this picnic wish to thank the visiting clubs for bringing and showing theirs cars.

Special thanks to Rod Rice for supplying the hamburgers and condiments.


Ford Advertisement - Tudor Sedan

THE LITERARY DIGEST JUNE 20, 1931

The Beautiful Ford Standard Sedan



A beautiful five-passenger car, with longer, wider body, and attractive, comfortable interior. The slanting windshield is made of polished plate safety glass. You can now have the new Ford delivered with this glass in all windows and doors at slight additional cost.



Model A ERA Clothing Fashions



Source: Phillip Lenssen at vintageadbrowser.com

Technical Notes

Distributor Will Not Fit Tight to the Head

By Lynn Sondenaa = Sandy, Oregon

I recently helped a friend who had just rebuilt their Model A distributor. It would not fit tight against the head. The distributor index pin (A-12128) would fit fine, if the lower distributor shaft (A-12249) was removed. As it turned out the reproduction lower distributor shaft was .125 (1/8 inch) too long. The original lower distributor shaft measured 5.6875 (5 11/16 inches) in length. The shaft was carefully ground on each end removing .0625 (1/16 inch). A vernier caliper, dial caliper, or digital caliper can be used for accurate measurements. The lower distributor shaft must be deburred after grinding to remove sharp edges and burrs.

2014 Calendar of Events

Jun 7, 2014	32nd Annual All Ford Show & Swap Meet; Hillsboro, OR
Jun 14, 2014	NW Annual Model A Picnic, Chehalis, WA
Jun 15, 2014	Willamette Valley A's Auto Swap Meet; Salem, OR
Jun 20, 2014	34th Annual Swap Meet; Brooks, OR
Jul 4, 2014	July 4 th Parade, Ridgefield, WA
Jul 14-18, 2014	2014 MAFCA National Conference, Puyallup, WA
Aug 8-10, 2014	Pig-n-Ford Races, Fair Grounds, Tillamook, OR
Sep 13, 2014	All Ford Car Show and Swap Meet, Old Town Orcutt, CA
Sep Date TBD	Volcano A's President's Tour
Nov 1-2, 2014	Bremerton Auto Swap Meet, Bremerton, WA
Nov 11, 2014	Ft. Vancouver Veterans Day Parade, Vancouver, WA
Dec 8, 2014	Christmas Potluck & Auction, Lanes Museum

Knudsen's Picnic Tour - 5/4/2014

Three Model A's and three modern's started from La Center, and four Model A's and 5 modern's finally arrived at the Knudsen's. During the rainy trip Jerry's Model A overheated and needed a little water. The pot luck food and companionship was great.

The following traveled up to Don & Ruby's: Jack & Pat Dusenberry, John & Dianne Earnest, Lynn & Marilyn Elvestrom, Mike & Penny Haight, Ron & Jane Hall, Bob & Carma Huset, Jerry & Dian Lane, Jack & Lynn Mattingley, Bob & Sherry Rusunen, Rich & Joanne Simpson, LeRoy & Sandy Helyer, and Linda & Leonard Willey.



To see more pictures visit the Touring tab on our website at www.volcanoas.net.

Lava Ladies June Tour

Date: Friday, June 6th

Time: We are meeting at the former OFFICE DEPOT at Jantzen Beach at 10:00 and carpooling from there.

Tour: We are going to tour Penzey's Spice Company in Beaverton Town Square.

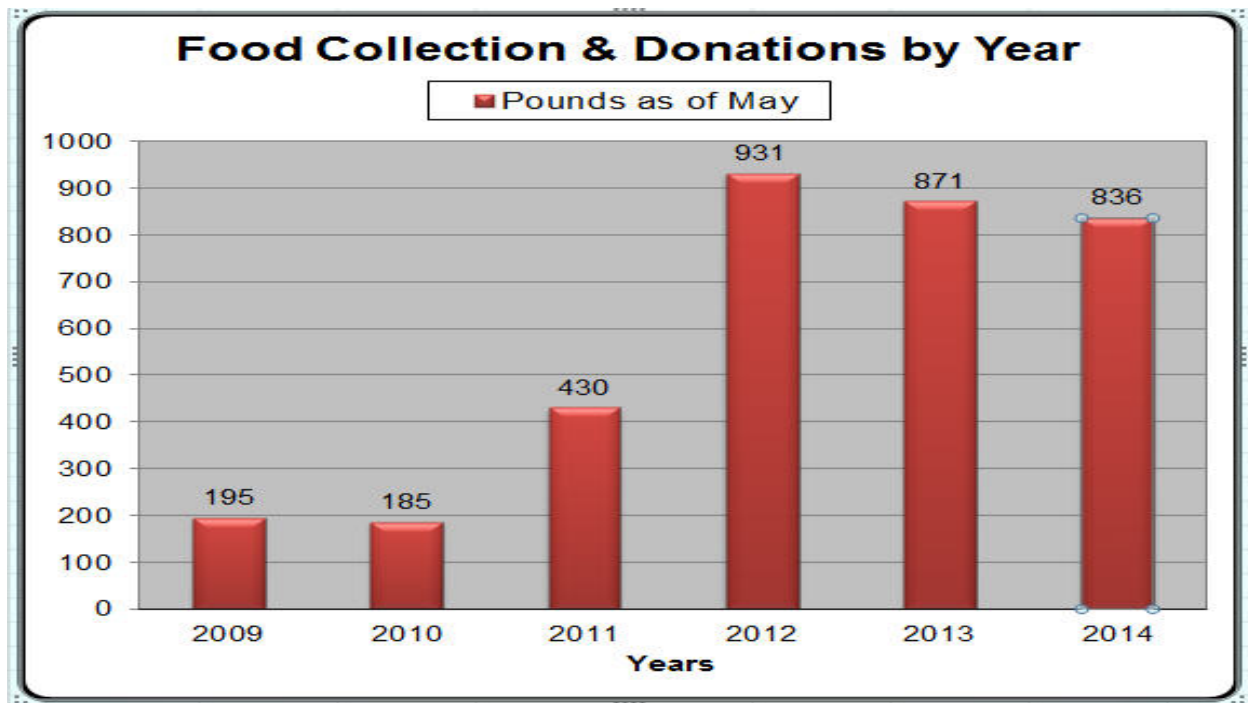
Lunch: We are having lunch at the Olive Garden, just across the street from Penzey's at approximately. 11:30.

Please let Lynn Mattingley (503 645-2682) know if you are interested in coming with us and didn't have a chance to sign up at the May meeting.



Communittee Service

The total food collection for May was 272 pounds!!! Great show!!! Our total now for the year is 836 pounds!! Keep up the good work and shop



John Carlile found the solution for cheap gas!



A Busy Street Scene - St. Louis, Missouri 1930

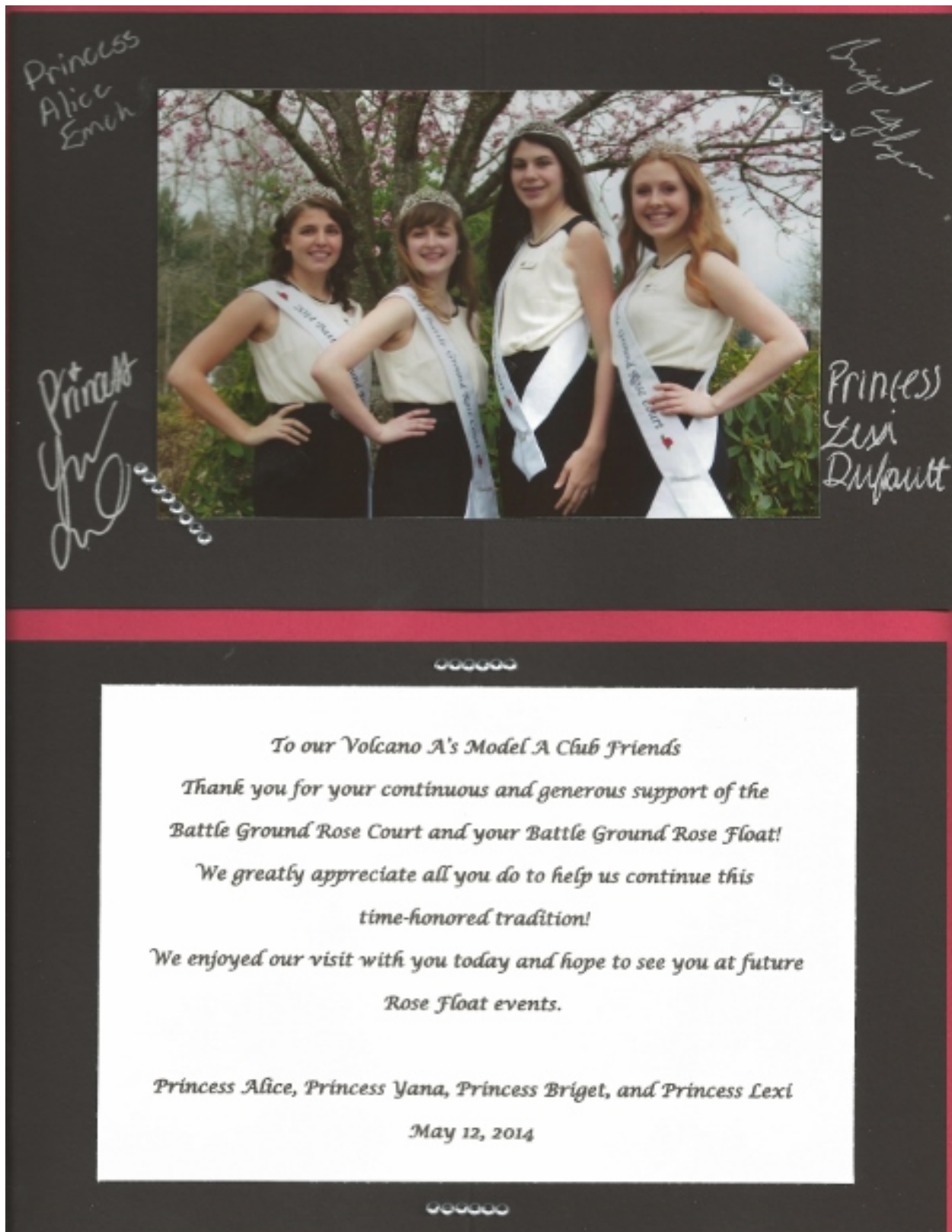


The St. Louis intersection of Delmar Boulevard and DeBaliviere Avenue, which enters from the left, is seen here in a view looking west in 1930. The large building on the left has been reported to be the streetcar powerhouse, and it has survived to this day. Most all of the buildings on the right side of the photo are gone. The street clock that is visible on the sidewalk on the right was in front of a grocery store that can be seen in the bottom photo. -

Reprint from: <http://theoldmotor.com>

Summer

Battle Ground Rose Parade Princesses



August 8-10th Tour - "A Fair to Remember" - Tillamook County Fair

Anytime we get together for a tour it is something to remember. The places we explore, the fellowship we enjoy, and the memories we collect. Therefore, the tour scheduled for August, I am sure, will be "A Fair to Remember." On Saturday we will attend the fair. There are several things to do while at the fair; looking at the exhibits, listening to music, enjoying the food. However the best part (at least I think) about this "Fair to Remember" will be sitting in the grandstands, watching the Horse races (wagers allowed for those who would like to take a chance on the winning horses) and then the Pig-N-Ford championship races for the season.

The Pig-N-Ford races started in 1925 when two local farmers were chasing a runaway pig in their Model T's and were having so much fun, they decided it should be a race at the next county fair. The drivers belong to the Tillamook County Model T Pig-N-Ford Association, and their membership is often a lifelong undertaking.

We will be making our own breakfast again at the Surfside Resort. A 'sign up' sheet for the two breakfast meals and one dinner meal will start circulating at the May meeting.

If you are interested in attending, give Marilyn Elvestrom a call 360-748-1214.



For Sale / Wanted

To place an "Ad" send your information to rrusunen@comcast.net, or call Bob Rusunen at 360-828-5317

Vehicles for Sale



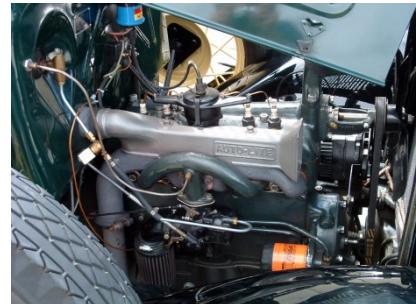
1931 Deluxe Roadster Sale price: \$18,700.

Contact information: Alan Marine

Home Phone: 803-366-3798 Cell Phone: 803-554-6636

Email: almarine@comporium.net

Address: 2231 Ridgecrest Rd. Rock Hill, South Carolina



Late 1931, wide bed, Budd Cab (all steel) pickup with 12,000 miles since restoration. Includes a Mitchell transmission with synchromesh second/third gear. F100 Ford rebuilt steering gear, pressurized radiator, hydraulic brakes. and new Goodyear tires/tubes. Price - \$25,000.

Contact information: Bob Kenady - kenrona73@aol.com

Support Our Area Suppliers

C'S AUTO MACHINE SHOP

- FLYWHEEL GRINDING
- RESURFACING
- BORING
- THERMAL CLEANING
- ROD REBUILDING
- BLOCK DECKING
- VALVE GRINDING
- ENGINE REBUILDING
- KNURLING
- PIN FITTING
- PRESS WORK
- ROTORS & DRUMS

JIM
574-4934

OPEN M-F, 8am-6pm
800 NE 86th Street
Vancouver, WA 98665

EDM
SPECIALISTS IN
REMOVING BROKEN TAPS,
DRILLS, STUDS & EASY-OUTS


We Save You Money www.CostLessAutoParts.net

Cost Less Auto Parts™

"NO EXCUSES, Get it done!"

Orchards 360-254-5710	Hazel Dell 360-695-4423	Kelso 360-353-5956
---------------------------------	-----------------------------------	------------------------------

Floyd's Model A Parts



Phone:
(360) 887-3346
1-800-852-3606
Boyd@WA-net.com

Janet Hickel, Owner
29300 NW 31st Ave / PO Box 98
Ridgefield, WA 98641



HART RADIATOR
Complete Radiator Service

501 Grade Street, Kelso
Fax 360-425-1189

*Auto, Truck & Industrial
Radiators, Heaters, & Air Conditioners*

360-425-6220

Doug Hart
360-430-3615 Cell

Allen Hart
360-430-9169 Cell



NorthWest

AUTO PAINT

SUPPLIES, INC.


SCOTT BUSH
Vice President

9518 N.E. COVINGTON ROAD
VANCOUVER, WASHINGTON 98662

CELL (360) 772-4599
BUS. (360) 254-0211
FAX (360) 254-6937

Benny Bennett

Holly Bennett



4219 St. Johns Rd NE • Vancouver, WA 98661 • (360) 993-0284
www.bennyspizzacafe.com



Jenifer Scott
Assistant Manager

303 E 15th Street
Vancouver, WA 98663
Telephone 360.694.8584
Fax 360.694.8843
amr5167@fedex.com

RICK PEABODY
PRESIDENT

TIM TOPPER
MANAGER

WILSON RADIATOR SERVICE

AUTO • TRUCK • INDUSTRIAL

"WE CAN HANDLE IT"

1612 LINCOLN AVE.
VANCOUVER, WA 98660

(360) 693-8971
(503) 224-7960
(360) 425-1583
1 (888) 693-8971

Volcano View Newsletter
Bob Rusunen, Editor/Webmaster
3720 NW 116th Street
Vancouver, WA 98685

