



**Volcano A's, PO Box 970, La Center, WA 98629**

[www.volcanoas.net](http://www.volcanoas.net)

Meeting: Church of the Nazarene - 16850 NE Fourth Plain Blvd, Vancouver, WA - Second Monday of Month - 7:00 PM

Guys breakfast meeting every Wed. (7:00am) at Hockinson Café, 219 NW 20<sup>th</sup> Ave, Suite 100, Battle Ground, WA

Guys lunch on Fridays (11:30 am) at Benny's Pizza & Café on 4219 St Johns Rd NE, Vancouver, WA

**Volume 6 Issue 6**

**June**

**2017**

**2015 MAFCA Newsletter Certificate of Merit**

**2015 MAFCA Website of the Year**

**2013 MAFCA Newsletter of the Year 2013 MAFCA Website of the Year**

### **2017 Club Officers**

**President:**

Jerry Lane - 360-263-6980

[northforkmuseum@gmail.com](mailto:northforkmuseum@gmail.com)

**Vice President:**

Roger Green - 503-602-2668

[Roger\\_o\\_green@yahoo.com](mailto:Roger_o_green@yahoo.com)

**Treasurer:**

Linda Willey - 360 687-0916

[lindawilley@mac.com](mailto:lindawilley@mac.com)

**Secretary:**

Sherry Rusunen - 360-828-5317

[rrusunen@comcast.net](mailto:rrusunen@comcast.net)

**Member at Large:**

Leonard Willey - 360-687-0916

[lindawilley@mac.com](mailto:lindawilley@mac.com)

**Past President:**

Jack Dusenberry - 360-256-0149

[jdsie@comcast.net](mailto:jdsie@comcast.net)

**Editor/Webmaster:**

Bob Rusunen - 360-828-5317

[rrusunen@comcast.net](mailto:rrusunen@comcast.net)

\*\*\*\*\*

Articles and contributions are encouraged and may be used as space permits. The deadline for all articles is the 20th of the preceding month. The Volcano View is a monthly publication of the Volcano A's Chapter - MAFCA E-mail all proposed articles to: [rrusunen@comcast.net](mailto:rrusunen@comcast.net).

### **Photo of Month**

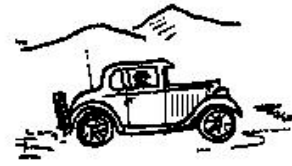


**1929 Model A Roadster**





## ***President's Note May 24, 2017***



Well now ~ Looky-looky, spring has arrived and everything is becoming colorful again. So, good for the Model A's as they shine much brighter on sunny days.

We are making plans for the tour to North Bend for the Regional Meet June 22<sup>nd</sup>. So far fourteen cars have signed up. We will travel Wednesday, June 21<sup>st</sup>, meeting at Jantzen Beach at ODOT just south of the Interstate Bridge at 8:00 AM. The route will be to the St Johns Bridge then Germantown Rd, turn right on Hwy 26 West to 99W to Florence and Hwy 101 to North Bend.

On the return trip, we will travel two days on Hwy 101 staying in Lincoln Sunday night at Ashley Inn.

Hope to see you there.

**Jerry**

---

### **Committee Chairs**

**Community Service:** Joyce Swartz/Tom Ryan

**Garage Workshop:** Tom Pagel

**Library/Historian:** Open

**NW Regional Rep:** Jack Dusenberry

**Public Relations:** Dian Lane

**Refreshments Coordinator:** Nancy Wooldridge

**Sunshine:** Pat Dusenberry

**Tour Director:** Roger Green

### **June 18, 2017**



### ***Front Page Photo***

*This 1929 Model A Roadster is currently owned by Darrel Freimuth. It was formally owned by Dick & Ginny Bay.*

### ***A Bit of Trivia***

In June 1931, the first photoelectric cell was installed commercially in West Haven, CT.

## **Volcano A's General Membership Meeting Minutes**

**May 8, 2017**

**CALL TO ORDER:** 7:00 pm by President Jerry Lane.

**GUEST:** Dave Legg was introduced by Jerry Lane.

**TOURS:** Roger Green reported that the Garage Tour excursion was a huge success and is sure that there will be more scheduled in the future. The tour to the Knudsens on May 7<sup>th</sup> was enjoyed by all. There were 5 cars who attended. Bibbi Lee suggested an email be sent to members if an excursion date is changed. All agreed. Roger then went over the list of upcoming excursions. Please refer to the tour list in the newsletter.

**TREASURER:** Linda Willey gave the financial report.

**EDITOR/WEBMASTER:** Bob Rusunen had no new report.

**COMMUNITY SERVICE:** Joyce Swartz reported 38#s of food was collected last month bringing our year total to 276#s!!

**SUNSHINE:** It was stated John Carlile is home from the hospital now, but still receiving dialysis 3 days a week.

**LAVA LADIES:** Carma Huset said the trip to Albetina Kerr's was fun for all!! Bibbi Lee said the trip to the peony farms is set for Sat. June 3<sup>rd</sup>. Check the newsletter for time and place. Dian Lane reported there was still a need for refreshment hostesses for Oct.

**OLD BUSINESS:** The minutes were approved and seconded by Austin Alling and Roger Green. Remember the NW Regional Meet in Coos Bay June 22-24. Make your reservations!! We are meeting at ODOT on Jantzen Beach at 8 AM on June 21<sup>st</sup>. Lynn Elvestrom's cars are still for sale!

**NEW BUSINESS:** A unanimous vote was taken to donate \$50.00 to the building fund for Peace Lutheran Church in Lynn Elvestrom's name.

**RAFFLE:** \$38.00 was won by Deon Schroeder and \$38.00 to the club.

**REFRESHMENTS:** Joyce Swartz and Carma Huset served cheese and crackers with fruit and cake!! Entertainment followed with the introduction of the Battle Ground Princesses for the Rose Festival!!

**ADJOURNED:** Meeting was adjourned by Jerry Lane.

Submitted by Sherry Rusunen.

### **Members Update**

Austin Alling  
4301 SE 179<sup>th</sup> Ct.  
Vancouver, WA 98683

Don LaBarre  
Home Phone: 509-470-6028

### **Lava Ladies**



We are looking forward to our P's & Q's tour on Saturday, June 3<sup>rd</sup> to Rainier Oregon for peony's & quilts. We'll leave from La Center at 10:30 as our lunch reservations are at 11:30.

Please bring your items for the Regional baskets to our June Club meeting.

Enjoy the sunshine!

### **Up Coming Club Tours**

#### **June 10<sup>th</sup>, Pacific Northwest Model A Picnic, Chehalis, Washington**

I know some of you want to attend this. I need someone to organize this, as Jerry & I will be AWOL! Please contact Roger Green, at (503) 602-2668 or [roger\\_o\\_green@yahoo.com](mailto:roger_o_green@yahoo.com).

#### **June 21<sup>st</sup>-26<sup>th</sup>, Northwest Regional Meet, Coos Bay, Oregon**

Our meeting place the OTOD parking lot on I-5 on Jantzen Beach, at 8:00 AM, Wednesday, June 21<sup>st</sup>. Our return is planned for Monday, June 26<sup>th</sup>.

#### **June 24<sup>th</sup>, Amalgamated Transit Union Picnic**

Location Chinook A & B, Blue Lake Park, 20500 NE Marine Dr., Fairview, Oregon 97024. Contact Sandra Guyot (360-907-3566) for more information.

#### **July 4<sup>th</sup> Parade, Ridgefield, Washington**

Details to follow but the basic plan will be to meet at the Green's, drop off picnic dishes, go do the parade & come back for a picnic.

#### **July 8<sup>th</sup>, WAAAM Historic Columbia River Highway & Antique Car Tour**

The tour begins and ends at the Western Antique Aeroplane and Automobile Museum (WAAAM), 1600 Air Museum Road, Hood River, OR 97031. It will proceed to the Senator Mark O. Hatfield West Trailhead, then along the Historic Columbia River Highway State Trail, through the Mosier Twin Tunnels, through the city of Mosier to Rowena Crest and return to WAAAM.

#### **July ??<sup>th</sup>, Progressive Lunch**

Details at a later date.



### Remember

## Twelfth Annual Celebration of the Pacific Northwest Model A Picnic

Saturday, June 10, 2017

In keep with the spirit and ambiance of the pre-war era and the post-war 1940s and 1950s that we are celebrating at this event, the cut-off year will be 1959 for cars allowed into the picnic/exhibition area. Cars from 1960 and later will be asked to park with the modern cars in the parking area west of the covered bridge.

# Summer

## The Coupe Book

1928 to 1931



Model A Ford Club of America



## MAFCA Announces

A New Book Specifically  
For The Model A Ford

Only \$24<sup>95</sup>

Containing articles from over 50 years from *The Restorer* magazine and additional information provided by Les Andrews and Steve Plucker, this book encompasses more than 180 pages specifically chosen for the Model A Ford Coupe owner. Every owner of a Model A Ford should include this book in their library, especially if you own a coupe.

To Get Your Copy

Visit [mafca.com](http://mafca.com)  
or call  
866-379-3619

# **HAPPY ANNIVERSARY**

2 Rita Dietrich  
9 Pete Hazard & Jann Jones  
11 John & Dianne Earnest  
13 Greg & Shirley Weast  
14 Rick & Paula Boehm  
16 Bob & Sherry Rusunen  
20 Jerry & Carlene Willis

## **HAPPY BIRTHDAY!**

6 Linda Freimuth  
6 Maddy Meghan  
7 Marlin Binder  
7 Amanda Uthe  
10 Rita Dietrich  
11 Gary Swartz  
12 Janice Bach  
14 Joanna Simpson  
17 Ardis Collins  
20 Richard Pargman  
20 Lynn Sondenaa  
22 Roger Green  
25 Mike LaFleur  
25 Jann Jones  
29 Dianne Earnest

### **Ford Factory Photo of the Month**



1929 40-A Standard Roadster

### **Refreshments**

**June:** Kathy Green & Linda Nielsen

**July:** Nancy Wooldridge & Bibbi Lee

**August:** Annual Club Picnic

**September:** MJ Peden & Linda Freimuth

**October:** Open

**November:** Roberta Emerick & Dianne Earnest

**December:** Holiday Potluck @ Lane's

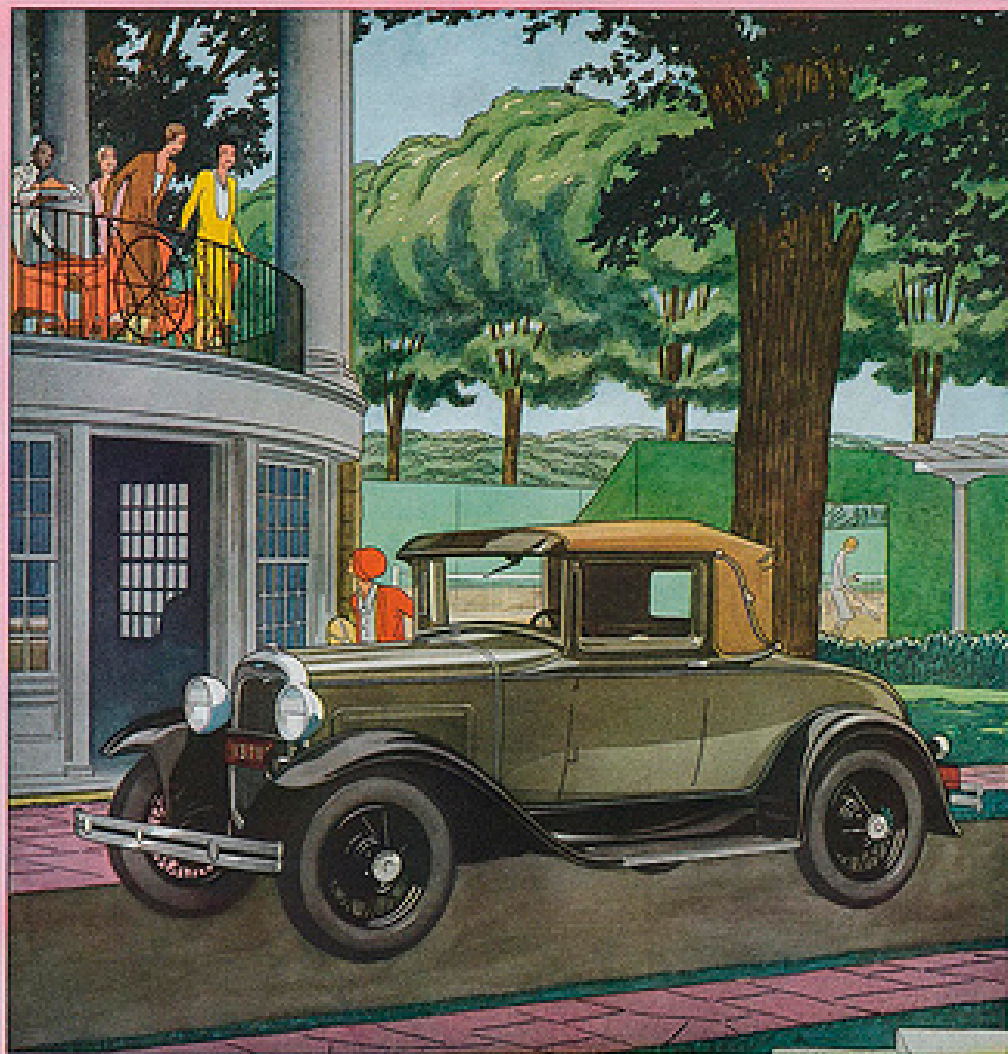
Note: Periodically some materials printed in our newsletter may have been borrowed from other club newsletters. We thank other clubs for sharing their newsletters with the Volcano A's. Also, when sources are known they will be included.

## Ford Advertisement

May, 1930

LADIES' HOME JOURNAL

### **A charming companion for a busy day**



THE NEW FORD BRINGS COMFORT

THE NEW FORD offers many advantages to the woman who uses an automobile constantly for quick trips to the Country Club, for shopping, the theater, for the many social and business activities of a busy day. Rarely is there to be found such an ideal combination of charm and utility.

In addition to its beauty of line and color, the new Ford brings you an unusual degree of mechanical excellence and good performance. You will drive with a new feeling of confidence because of its safety and ease of operation and control.

Source: Ford Model A Advertising on Pinterest

**Model A ERA Fashions**

# NOTRE LINGERIE DE SOIE

**LA VESTE PIGEE** en soie, avec boutons de soie, 79.  
**LA VESTE PIGEE** en soie, avec boutons de soie, 79.  
**LA VESTE PIGEE** en soie, avec boutons de soie, 79.  
**LA VESTE PIGEE** en soie, avec boutons de soie, 79.

**LA VESTE PIGEE** en soie, avec boutons de soie, 48.  
**LA VESTE PIGEE** en soie, avec boutons de soie, 48.  
**LA VESTE PIGEE** en soie, avec boutons de soie, 48.

## NOS PARURES

**LA VESTE PIGEE** en soie, avec boutons de soie, 85.  
**LA VESTE PIGEE** en soie, avec boutons de soie, 85.  
**LA VESTE PIGEE** en soie, avec boutons de soie, 85.

**LA VESTE PIGEE** en soie, avec boutons de soie, 78.  
**LA VESTE PIGEE** en soie, avec boutons de soie, 78.  
**LA VESTE PIGEE** en soie, avec boutons de soie, 78.

Source: Phillip Lenssen at [vintageadbrowser.com](http://vintageadbrowser.com)



## Technical Notes

### **Protecting the Transmission when the Shifting Tower is Removed**

By Lynn Sondenaa - Sandy, Oregon

When the shifting tower has been removed from the transmission there is danger of dirt and foreign materials falling into the transmission case. To prevent the danger, I made a cover for protection, (Fig.1) it is made out of a piece of 12-gauge steel. I used the shifting tower gasket for the bolt hole locations. Only the rear and center holes need to be drilled. I welded a 3-inch steel grab handle onto the center of the cover. This will allow the transmission to easily be carried. Also, if you are removing or installing a Model A engine and transmission from a car or pickup you will now have an easy to use rear point handle. This greatly helps to get the engine and transmission placed into the correct position.

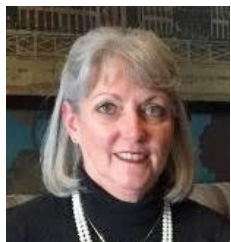




Header from the MAFCA Website

## MAFCA President's Page – Happy Begg

May 2017



What better way to share happiness than touring our beautiful country in your Model A with your fellow club members? As I prepare to travel with our MAFCA SIG, the Southeastern Touring Group, I am imagining all the fun and happiness we will share. We will be touring in the beautiful Bluegrass State of Kentucky near Lexington. Yes, it will be Derby Weekend, but we are hopeful that we will be visiting the sights the Derby fans will not. I am looking forward to the green rolling hills and white fences that are uniquely Kentucky. We are planning a trip to the Old Friends Retirement home of past racehorses and a lunch at the famous Daniel Boone Tavern Restaurant, operated by Berea College, while in the area.

While touring, our SIG will be keeping tabs of our mileage for the "100K in A Day" program. All members of the Southeastern Touring Group are members of MAFCA, so whichever day we choose, we will be sending in our total mileage. Remember, you choose the day, collect everyone's mileage - that means their mileage from home and back for the entire day is counted, and then send your groups' total to [100K @ mafca.com](mailto:100K@mafca.com). Only MAFCA members' mileage is eligible for the program. If you have folks participating with your driving tours, who do not have membership in MAFCA, please encourage them to join. There is always more fun in numbers than alone!

Several years ago, the membership of MAFCA voted to change the By Laws regarding the number of terms a person could serve on the MAFCA Board successively. That change limits an elected Director to two successive terms and then is not eligible to serve on the Board of Directors for two full years. At the time, it was not seen by the membership as a problem. But, as we move forward to this year's election, we are seeing a problem with this By Law change. The problem, our members are not stepping up to help lead our great club! Folks, we need your help to keep running this club into the future. Garth Shreading, Membership Director, would love to speak with you in this regard. He can answer all of your questions about what being a Director involves, what expenses are reimbursable, and what each position is responsible for. Please call Garth, (409) 753-2564, or email him, [membership @ mafca.com](mailto:membership@mafca.com), with your questions or suggestions for nominees.

The new Coupe Book is about to go to the printer. This long awaited for compilation of all of The Restorer articles on the various Coupes will be for sale soon. I am anxiously waiting for my copy, as I have just finished restoring a 1930 Sport Coupe. I spent a great deal of time combing through the First Fifty Years of The Restorer looking for articles on Sport Coupes and this book will be of great help to me in the future. You can buy *The First Fifty Years of The Restorer*, a flash drive, on the club website.

In closing, this is a beautiful time of the year to take your Model A out for a drive, whether you are just going for ice cream or taking a cross country trip. Share your happiness with the world and drive your Model A! Happy Motoring, Happy Begg 2017 MAFCA President.

### Information

The **Model A Ford Club of America, Inc. (MAFCA)** is a California non-profit corporation and a national historical society dedicated to the restoration and preservation of Model A Ford vehicles as manufactured from 1928 through 1931.

MAFCA's members are dedicated to the restoration, preservation, and enjoyment of Ford vehicles of that era. MAFCA is the largest club in the world dedicated to one make of automobile. Volcano A members are urged to join the Model A Ford Club of America, Inc. Visit the MAFCA website for a membership application. Dues are \$40 yearly and include a subscription to **The Restorer**.

### Future MAFCA Events

#### **Northwest Regional Group Meet**

2017 - Jun 22-24, Coos Bay, Oregon

Host: Myrtlewood A's

#### **MAFCA National Convention**

2018 - June 24-29 - Reno-Sparks, Nevada

Host: Northern California Regional Group

#### **MAFCA National Tour**

2017 - September 24-29 - Pacific Coast Hwy

Host: Bakersfield Chapter

### **May 7<sup>th</sup> Pot Luck tour to Don & Ruby Knudsen's**

The Model A group met in downtown La Center at 9:00 AM and left for Longview at 9:15 AM. At 10:15 AM, they met up Don & Ruby at Highway 432 & Coal Creek Road in Longview. Don guided them on back roads to their house. Here are some photos of the event.



### **2017 MAFCA National Tour- September 24-29**

Beginning in Paso Robles, CA with dinner at the Estrella War Birds Museum, then touring out to Cambria, CA to pick up the Pacific Coast Highway. From there we will wind our way north on CA Hwy 1 to San Simeon and the Hearst Castle, then it is on up the coast to Half Moon Bay, Big Sur, Carmel, Monterey Bay, San Francisco and over the Golden Gate Bridge. The tour will end in Napa Valley.



## Battle Ground Rose Court for 2017

Princess  
McKenna

Princess  
Danielle



Princess  
Teaghan

Princess  
Jenifer

To our Volcano A's Car Club friends  
Thank you for your continuous and generous support  
of the Battle Ground Rose Court and YOUR Battle Ground Rose Float!

We greatly appreciate all you do  
to help us continue this time-honored tradition!

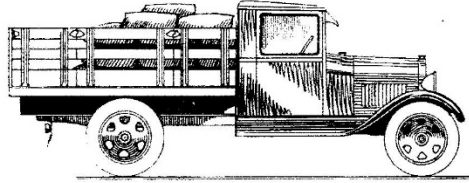
We enjoyed our visit with you today  
and hope to see you at future Rose Float events.

Princess Danielle, Princess Jenifer, Princess McKenna, & Princess Teaghan

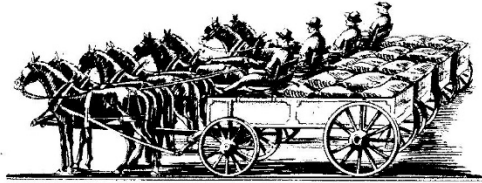
May 8, 2017



## The Ford Truck vs. Horses



Price—(F.O.B. Detroit) 1½-Ton Chassis, Stake Body, and Closed Cab . . . **\$665**



Price—8 Horses and 4 Wagons . . . . . **\$1200**

### Truck Operating Costs Per Mile

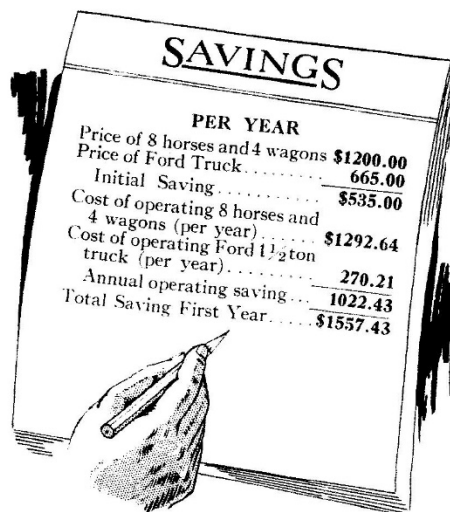
Gasoline—11 mi. per gal., 22c gal. . . . .	.02
Oil—5 qts. per 500 mi., 20c qt. . . . .	.002
Lubrication—50c per 500 mi. . . . .	.001
Depreciation— $\frac{1}{5}$ of cost less tires per year* . . . . .	.052
Tire allowance* . . . . .	.009
Repairs . . . . .	.008
Interest—6% of third year value† . . . . .	.009
Insurance at 5% of value . . . . .	.016
License—\$24.00 per year . . . . .	.011
<b>Total cost per mile . . . . .</b>	<b>\$ .128</b>
<b>Total per year (2111 miles) . . . . .</b>	<b>\$270.21</b>

### Cost of Keeping Horses Per Horse

Feed . . . . .	\$ 133.64
Shoeing . . . . .	2.16
Veterinary . . . . .	1.13
Chores . . . . .	15.83
Interest (Horse and $\frac{1}{2}$ Wagon) . . . . .	9.00
Harness . . . . .	4.82
Depreciation (Horse and $\frac{1}{2}$ Wagon) . . . . .	10.00
<b>Total . . . . .</b>	<b>176.58</b>
<b>Manure Credit . . . . .</b>	<b>15.00</b>
<b>Total Net Cost per head . . . . .</b>	<b>161.58</b>
<b>Total Net Cost eight horses per year . . . . .</b>	<b>\$1292.64</b>

Based on several hundred cost reports on the 1½-ton Ford Truck and on United States Department of Agriculture Bulletin No. 1314—"Motor Trucks on Corn Belt Farms."

\*Cost of tires written off per mile.  
†Average of 5 years' life.



Based on United States Department of Agriculture Bulletin No. 997, "The Cost and Utilization of Power on Farms Where Tractors Are Owned" and "Bulletin No. 931, Comparison of Time Required to Haul with Motor Trucks." This shows that a 1½-ton truck replaces 8 horses.

## TINY TIPS

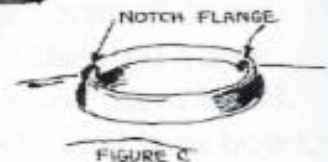
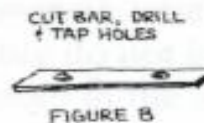
**R**

### SECURING RADIATOR ORNAMENTS

If a quail or other permanent base, flip-top radiator ornament fits loosely or is chipped, it may come off too easily. This procedure will remedy the situation and make the ornament solid - removable only with an Allen wrench. My quail used to fit so loosely that I removed it whenever I left the Ford unattended. Remove the brass lugs on the bottom of your cap. These are usually held on with Allen head screws. See figure A.

Cut a piece of metal bar with the same width as the removed lugs. The bar should be about the same thickness as the lugs. The length of the bar should be as long as possible within the diameter of the radiator neck under the flange. Test the cut bar for fit. It should have about 3/16" play on the ends. Drill and tap the bar to accommodate the Allen head screws. See Figure B. Some of the material may have to be removed from the area of the lugs on the cap base. If so, file very carefully and remove only the necessary material for the bar to fit snugly. Notch the radiator neck flange with a small file (or a broken round file chucked in an electric drill) where the new bar will be when the cap is in place. File and fit until this notch is as deep as practical for your cap. See Figure C.

With the new locking bar loosely attached, put the cap on and tighten the Allen head screws. As the screws are tightened, the bar will be pulled up into the notches, holding the base firmly. The bar does cover part of the radiator opening, but it doesn't keep you from checking the coolant level nor does it interfere with the overflow tube.



*Submitted by Ron Harper, Corvallis, Oregon*



## **For Sale Items or Wanted**

To place an "Ad" send your information to [rrusunen@comcast.net](mailto:rrusunen@comcast.net), or call Bob Rusunen at 360-828-5317

These are the former Lynn Elvestrom's Model A Fords. For more information on these cars call Jerry Lane at 360-600-3158.



1929 Ford Model A Sedan Murray - \$15,000



1929 Model A Speedster - \$12,000



1930 Ford Model A Roadster - \$17,000

## Support Our Club Suppliers

Benny Bennett Holly Bennett



4219 St. Johns Rd NE • Vancouver, WA 98661 • (360) 993-0284  
www.bennyspizzacafe.com

### C'S AUTO MACHINE SHOP

- FLYWHEEL GRINDING
- RESURFACING
- BORING
- THERMAL CLEANING
- ROD REBUILDING
- BLOCK DECKING
- VALVE GRINDING
- ENGINE REBUILDING
- KNURLING
- PIN FITTING
- PRESS WORK
- ROTORS & DRUMS

**JIM**  
**574-4934**

OPEN M-F, 8 am-6 pm  
800 NE 86th Street  
Vancouver, WA 98665

EDM  
SPECIALISTS IN  
REMOVING BROKEN TAPS,  
DRILLS, STUDS & EASY-OUTS

*We Save You Money* www.CostLessAutoParts.net

## Cost Less Auto Parts™

**"NO EXCUSES, Get it done!"**

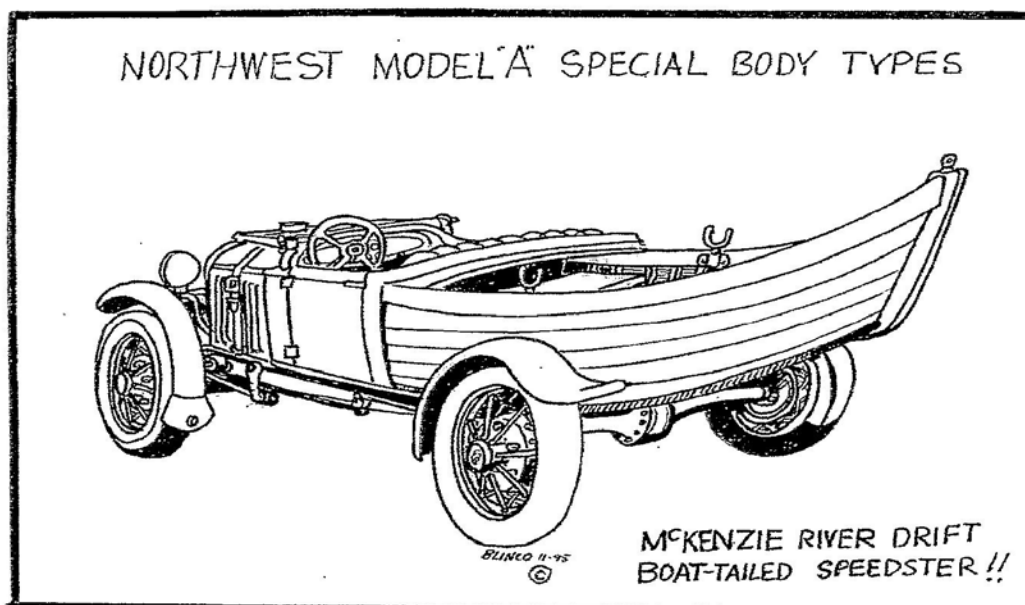
<b>Orchards</b> 360-254-5710	<b>Hazel Dell</b> 360-695-4423	<b>Kelso</b> 360-353-5956
---------------------------------	-----------------------------------	------------------------------

Amanda Uthe  
RustyLugParts.com

## Rusty Lugs Rod's & A's

Open: M-F 9am-5pm  
Formerly:  
Floyds Model A Parts

8021 NE 142nd Ave  
Vancouver, WA 98682  
p. 360-887-3346  
rustylugparts@gmail.com





***Volcano View Newsletter***  
***Bob Rusunen, Editor/Webmaster***  
***3720 NW 116<sup>th</sup> Street***  
***Vancouver, WA 98685***



Courtesy from MAFCA - "A" of the Day photos