



Volcano A's, PO Box 970, La Center, WA 98629

www.volcanoas.net

Meeting: Church of the Nazarene – 16850 NE Fourth Plain Blvd, Vancouver, WA - Second Monday of Month – 7:00 PM

Lunch and Take-Out at Benny's Pizza & Café on 4219 St Johns Rd NE, Vancouver, WA

Volume 10 Issue 6

June

2021

2020, 2017 & 2015 MAFCA Newsletter Certificate of Merit

2018 – MAFCA Website of Distinction

2017 MAFCA Website Certificate of Merit

2013 MAFCA Newsletter of the Year 2015 & 2013 MAFCA Website of the Year



1929 Model A Phaeton





President's Note ***May 24, 2021***

First, a big thanks to Jim Kelly for our recent tour to miniature and large train museums, very interesting and informative.

Our next tour to Richland, WA by Mike & Becky Blick will be filled with many interesting events, so be ready to meet at Fred Meyers lot on Chkalov at 9:00 am on Monday, June 7th. We will return home on Thursday, June 10th after enjoying a good time.

At this time, we are planning a Volcano A meeting at the Lane's on Monday July 12th at 6:00 pm.

Have your cars ready to roll.

Jerry

Upcoming Events

July 12, resumption of club meetings (This one at the Lanes Museum)

Tour July 17, Scavenger hunt tour and Ice cream social

Food provided by Nancy Wooldridge and Lynn Mattingly



2021 Board of Directors

President:

Jerry Lane - 360-263-6980
northforkmuseum@gmail.com

Vice President:

Corley Wooldridge 360-567-6349
Corley@corleyw.com

Treasurer:

Linda Willey – 360 687-0916
lindawilley@mac.com

Secretary:

Sherry Rusunen – 360-828-5317
rrusunen@comcast.net

Member at Large:

Austin Alling – 360-901-5998
Austin.Alling@icloud.com

Past President:

Jack Dusenberry - 360-256-0149
j dusie@comcast.net

Editor/Webmaster:

Bob Rusunen - 360-828-5317
rrusunen@comcast.net

Committee Chairs

Community Service: Joyce Swartz

Garage Workshop: Tom Pagel

NW Regional Rep: Roger Green

Public Relations: Dian Lane

Refreshments Coordinator: Nancy Wooldridge

Sunshine: Karen Huset

Tour Director: Corley Wooldridge

Articles and contributions are encouraged and may be used as space permits. The deadline for all articles is the 20th of the preceding month. The Volcano View is a monthly publication of the Volcano A's Chapter - MAFCA E-mail all proposed articles to:
rrusunen@comcast.net

Check out the MAFCA Website!

www.mafca.com



“To keep a lamp burning, we have to keep putting oil in it.”
- Mother Teresa

June



2021

Volcano A's Celebration's & Events Calendar

Sunday	Monday	Tuesday	Wednesday	Thursday	Friday	Saturday
		1	2	3	4 I	5
6 <i>D-Day 1944</i> <i>Happy Birthday</i> Linda Freimuth	7 <i>Tri-Cities Tour</i> <i>Happy Birthday</i> Marlin Binder Amanda Utke	8 <i>Tri-Cities Tour</i>	9 <i>Tri-Cities Tour</i> <i>Happy Anniversary</i> Pete Hazard & Jann Jones	10 <i>Tri-Cities Tour</i> <i>Happy Birthday</i> Rita Dietrich	11 <i>Happy Anniversary</i> John & Dianne Earnest <i>Happy Birthday</i> Gary Swartz	12 <i>Happy Birthday</i> Janice Bach
13 <i>Happy Anniversary</i> Greg & Shirley Weast	14 <i>Happy Anniversary</i> Rick & Paula Boehm <i>Happy Birthday</i> Joanna Simpson	15	16 <i>Happy Anniversary</i> Bob & Sherry Rusunen	17 <i>Happy Birthday</i> Ardis Collins	18	19
20 <i>Happy Father's Day</i> <i>Happy Birthday</i> Richard Pargman	21 <i>Summer Begins</i>	22 <i>Happy Birthday</i> Roger Green	23	24	25 <i>Happy Birthday</i> Jann Jones	26
27	28	29 <i>Happy Birthday</i> Dianne Earnest	30			



On April 19th, 2021, the NW Regional Group of MAFCA meet on-line.

President Don Gibbard called the meeting to order at 4:01 pm. Vice president Jan Jackson, Treasurer Linda Harding and Secretary Carrie Dira were also in attendance. Representatives from the Chapters were as follows Jackie Bonner and Laura Henke – Inland Empire A's, Tom Winterrowd – Beaver Chapter, Kitsy Wikkerink – Rouge Valley A's, Pat Van Pelt – Apple Valley Yakima Club, Rich Nestler – Evergreen Club, John & Nancy Firth – Henry's Lady Club, Roger Green – Volcano A's, Ron Rigby -Calgary, Bob Myers – Willamette Valley Model A's.

Don called on Jan Jackson to give a report on the regional meets. Everything planned was cancelled. The 2021 meet in Idaho is cancelled. Jackie Bonner was asked to consider taking over 2022. She will talk with her club. She seemed amenable to having the meet as a Hub only one but needs to check with her club. Portland in 2023 is a possibility. Tom Winterrowd will talk with the club but 2023 sounded OK. Jan is still interested in having a Hub tour in Victoria, but there is no commitment. Big Sky will also be contacted for 2024.

Don asked if the club think regional meet are important. His answer was yes, but as we all age it gets harder to get people to attend. If anyone has an idea for a meet contact Don or Jan.

Linda indicated that seed money is available (up to \$2500.00) for a meet. Let Linda know if you need funds for a meet.

The National Tour is pretty much full.

Some Clubs have done area tours. Don asked if any clubs are planning to do area tours. The response was no, mainly because of COVID. Rouge Valley and two other clubs are doing a 1-day tour. Don asked if clubs are inviting other clubs in their area on their tours. Some do.

A question of how to attract new members and keep current was posed and a discussion ensued. Some of the ideas were to encourage participation with on-line meetings, calling each member to update them and see how they are doing, send birthday cards, create tutorials for car maintenance and make them available on your website. Have a handout about your club with you when on tour, for when people come to see the cars. Get the cars out so they can interest people. A discussion of posting newsletter on web sites. Also discussed were "Car Stories" which could also be posted to the club web site. A presence on Facebook was also suggested.

Update on the Portland swap meet. All 6 sponsoring clubs have contributed 10 k to fund it for 2022.

A discussion on the amounts of club dues ensued. Dues range from \$5.00 to \$35.00. A discussion of electronic versus paper newsletters. Some clubs are all electronic, some have a mix. Some require members to pay if they want paper, some do not charge.

Submitted by Roger Green

1920's Ladies Fashion



Source: Vintagedancer.com/1920's

1928-1931 Men's Fashion



1920s Men's Fashions: Formal Trends Featuring Suits, Dress...

Source: Vintagedancer.Ccm/1920's

How to Drive Your Model A

Tech Tips by Clyde Miller
Found this from our March 2013 Action A

How to Drive Your Model A

To Start the car:

1. Turn on gas (either under the dash or under the hood depending on what year your Model A is.
2. Turn the key on
3. Retard the spark control (up towards the front of the car - left of wheel)
4. Pull gas rod (hand throttle) down til gas pedal moves slightly
5. Pull choke rod out
6. Depress the starter button
7. As soon as the engine starts release the choke rod
8. Pull the spark control down 2 notches Raise hand throttle to idle

To Get Car moving

1. Disengage emergency brake
2. Depress the clutch
3. Put car in 1st gear
4. Slowly depress the gas pedal
5. Slowly release the clutch pedal

To Change Gears

1. Let off gas
2. Depress the clutch (double clutch meaning depress clutch move gear shift out of 1st gear to neutral slowly let up on clutch, then depress clutch a second time and move shift lever into 2nd gear and slowly release the clutch smoothly) This synchronizes gear mesh, don't go too fast between shifts or shift too fast.
3. Press gas pedal

As you gain speed

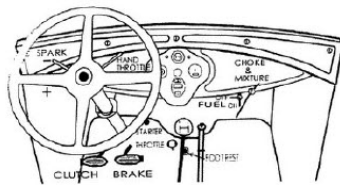
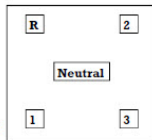
1. Repeat steps 1 & 2 shifting into 3rd gear
2. Press on the gas pedal

To Stop the Car

1. Let off the gas
2. Depress the brake
3. Depress the clutch
4. Shift into neutral
5. Engage emergency brake

To Shut Down

1. Turn off gas (if not going again for a long while)
2. Let run until engine stalls



Model A Ford Advertisement

THE SATURDAY EVENING POST July 18, 1927

EDITOR SAYS
73,000 Miles is only a Start

SEVENTY weeks ago we published an account of a Ford that had been driven 73,000 miles in less than a year by three mail carriers in Iowa. The article created much comment and brought many letters telling of the unusual reliability, economy and long life of the Ford. Here is an interesting letter from the editor of a newspaper in Kansas.

"In one of your recent advertisements in weekly newspapers you tell of a Ford that has been driven 73,000 miles in less than a year. That's no mileage at all for a Ford. There is a Ford in this community that was driven 100,000 miles before it was traded in. The car was bought in August, 1926, and driven until November, 1926, by its owner. It is a carrier of the Wichita Daily Eagle, making a route of 220 miles daily with a morning and evening paper. On Sunday, only one trip of 70 miles is made. About 20 miles of the route is over paved streets—the rest is on rough dirt and gravel streets through three small towns.

"Operating and up-keep costs were exceptionally low. After the car was traded in for a new Ford I am informed that it was overhauled and is now almost as good as its new owner."

Letters like this are indicative of the substantial worth of the Ford and the high quality built into every part. In every detail of construction it is made to endure—in service faithfully and well for many thousands of miles. The price is low because of large production and constant Ford manufacturing facilities.

THE NEW FORD DEARBORN, Michigan, near Dearborn, Mich. Illustrated with a photograph of a Ford Model A. Reprinted from the Ford Model A Sales Plan of National Credit Company.

Technical Q&A from the MAFCA Website https://www.mafca.com/toa_tools.html

By Rick Black

These tools are described in detail in the "Restoration Guidelines & Judging Standards" published jointly by MAFCA and MARC.

The original tool kit supplied with Model A and AA vehicles consisted of the following 13 items:

Adjustable Wrench
Engine Crank and Wheel Lug Wrench
Grease Gun
Instruction Owner's Manual
Jack and Stand
Oil Can (thru May 1928)
Open End Wrenches - 7/16 x 1/2 & 9/16 x 5/8
Pliers (screwdriver blade on end of handle)
Screw driver
Spark Plug/Cylinder Nut wrench
Tire Iron
Tire Pump
Tool Bag



1931 Tool Kit Display

To go to the link place the cursor on the link and press <Tab> and <Enter>.

Accessory Tools are listed in the **ACCESSORIES** section

The following are examples of the first two links.



ADJUSTABLE WRENCH

All adjustable wrenches were about 9 1/4" long and had a square end on the handle, which was used to remove the drive pin plug on the differential housing.

Some wrenches did not have the Ford Script.

For more information, consult the Model A Restoration Guidelines and Judging Standards, Chapter 17

CRANK - A-17036-x

There were 7 different cranks for the Model A:

Year	Size	Finish	Length (1)	Throw (2)
1927 (except)	1 1/16"	enamel	9 3/4"	6"
1927 (thru June 28)	1 1/16"	enamel	9 3/4"	7 1/2" or 8"
March 1928	1 1/16"	enamel	10-11 1/2"	7 1/2"
Apr-May 28	1 5/16"	black	10-11 1/2"	7 1/2"
June 29-Oct 29	1 5/16"	black	9 3/4"	6"
Nov 28	1 5/16"	black	10-11 1/2"	6"
Nov 29-end	1 5/16"	black	10-11 1/2"	7 1/2"

- 1 - the angle between a line through two lugs and the center member
- 2 - distance between the handle and the member carrying the lugs, measured along the center member

For more information, consult the Model A Restoration Guidelines and Judging Standards, Chapter 17

1929 COST OF LIVING

LIVING

New House	\$7,249.00
Average Income	\$2,062.00 per year
New Car	\$450.00
Average Rent	\$20.00 per month
Tuition to Harvard University	\$400.00 per year
Movie Ticket	25¢ each
Gasoline	12¢ per gallon
United States Postage Stamp	2¢ each

FOOD

Granulated Sugar	65¢ for 10 pounds
Vitamin D Milk	58¢ per gallon
Ground Coffee	49¢ per pound
Bacon	25¢ per pound
Eggs	15¢ per dozen
Fresh Ground Hamburger	12¢ per pound
Fresh Baked Bread	9¢ per loaf

Seek Publishing	Remember When	1929
-----------------	---------------	------

MAFCA Invites You to the 2021 National Tour

June 20 - 25

2021

North Conway, NH

Sign up for Early Bird Newsletter
whitemountainadventure2021@gmail.com

Hub and Spoke Tour Format

Enjoy road less traveled, taking in peaceful surroundings and breathtaking views of all that the Granite State offers ...

Visit:

- Mount Washington Auto Road
- Kancamagus Highway
- Clark's Trading Post
- Conway Scenic Railway
- Settlers Green Shopping Outlets
- Mount Washington COG Railway
- Mount Washington Cruises
- Castle in the Clouds



Hosts
New Hampshire Lakes Region Model A Club

www.2021mafcanationaltour.com

www.facebook.com/groups/94230639533378



A WHITE MOUNTAIN ADVENTURE

The Restorer May June 2021





Welcome New Member

Crawford, Jay & Robin
 25513 NE Berlin Rd.
 Battle Ground, WA 98604
 360-833-3138
jbrdmn@yahoo.com
 1929 Tudor Sedan



Did Women Wear Pants in the 1920s? Yes! sort of...

RUMBLE SEAT DRIVER MUST CARRY THIS LICENSE ON SAID PERSON OTHERWISE MUST REMAIN SILENT WHILE IN VEHICLE	State of Nervous Disorders and Anxiety	LICENSE NUMBER 27-1931 The Issuing Authority, THE MODEL A FORD CLUB of AMERICA, Have Assigned The Above Number Based On Whatever Insignificant Reason It Has
	RUMBLE SEAT DRIVER'S LICENSE	
	NAME _____	
	ADDRESS _____	
CITY _____ STATE _____		
SIGNATURE OF LICENSEE _____		
THIS LICENSE CERTIFIES THAT THE HEREIN NAMED PERSON HAS PASSED THE NECESSARY TESTS OF ANNOYING DRIVERS AND PASSENGERS TO THE EXTENT THAT HE/SHE IS HEREBY REGULATED TO THE RUMBLE SEAT ONLY AND SHALL NOT BE PERMITTED TO SIT INSIDE ANY MOVING MODEL A FORD. UNDER NO CIRCUMSTANCE SHALL THE LICENSEE DISTURB, CRITICIZE OR ANNOY THE VEHICLE'S PASSENGER AND ESPECIALLY THE OPERATOR.		
DATE ISSUED 1927-1931 LICENSE EXPIRES AT THE DISCRETION OF THE VEHICLE OPERATOR		ISSUED BY: COMMISSIONER OF BACK SEAT and RUMBLE SEAT DRIVERS DEPT. OF CONFUSION

You Are Invited
 To The Annual **Veterans Of The Road** Old Car Picnic
 Saturday, August 7th, 2021

The picnic will take place at 1354 Pleasant Valley Road, West of Chehalis, WA. This year's theme will be **"Events of 1941"** including the 80th anniversary of the sinking of the German battleship *Bismarck*. The *Café Society Orchestra* will be playing tunes that were popular with "hotel bands" of the 1940s. The term "Café Society" was coined by columnist Maury Paul and refers to movie celebrities who frequented fashionable restaurants and night clubs. Everyone is encouraged to dress for the 1940s.

What to Bring: Pot-luck food and folding chairs

NOTE

No hot-rods or modified cars allowed at this event.

Ticket Activity

White: Tickets for the **Grand Prize pedal car** will be given to all antique and classic cars as they enter the covered bridge.

Green: Tickets for the door prizes can be picked up at the booth in the picnic area.

Red: Tickets for the **Raffle Prize**, a 1940s GE Model 201 table radio (restored by Mike McCrow of The Northwest Vintage Radio Society), will be sold at the booth in the picnic area.

Schedule of Events

11:00 AM 1929 Travel Air biplane fly-in. Air rides will be available.

12:00 Noon Orchestra performs first half of program

Intermission : **Red Ticket drawing for the Raffle Prize**
Green Ticket drawings for Door Prizes

Orchestra performs second half of program

White Ticket drawing for the Grand Prize Pedal Car

Facilities: Out-houses, water and washing facilities.

The hosts and sponsors of this picnic wish to thank the visiting clubs for bringing and showing their cars.

The Billboard shows a 1941 Dodge

For more information: (360) 740-4834



THINK GASOLINE IS EXPENSIVE...

This makes one think, and also puts things into perspective

- Diet Snapple, 16 oz , \$1.29 ... \$10.32 per gallon!
- Starbuck's Reg. Coffee 16 oz, \$2.10... \$16.80 per gallon!
- Lipton Ice Tea, 16 oz , \$1.19 ... \$9.52 per gallon!
- Gatorade, 20 oz , \$1.59 \$10.17 per gallon!
- Ocean Spray, 16 oz , \$1.25 .. \$10.00 per gallon!
- Brake Fluid, 12 oz , \$3.15 \$33.60 per gallon!
- Vick's NyQuil, 6 oz , \$8.35 ... \$178.13 per gallon!
- Pepto Bismol, 4 oz, \$3.85 . \$123.20 per gallon!
- Whiteout, 7 oz , \$1.39 \$25.42 per gallon!
- Scope, 1.5 oz , \$0.99\$84.48 per gallon!
- Evian water, 9 oz , \$1.49 ..\$21.19 per gallon! \$21.19 for a gallon of WATER!! and the buyers don't even know the source!! (Evian spelled backwards is Naive.)
- Ever wonder why computer printers are so cheap? So they can hook you for the ink. Someone calculated the cost of the ink; you won't believe it but it's true: \$5,200 a gal. The newsletter just cost more to print!!



Cotter Pin Marker

Idea by Stephen Lester, Saratoga Springs, New York
Illustrations by Stephen Holt, Urbana, Illinois

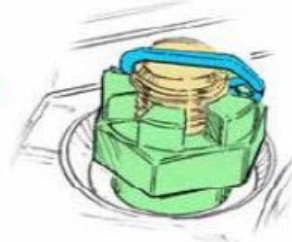
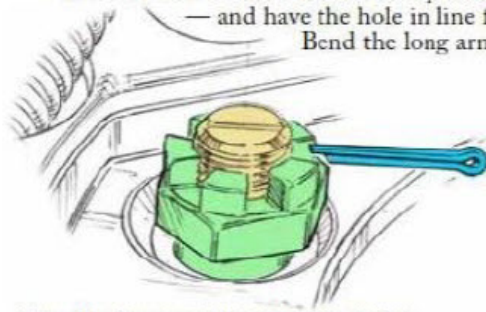
Tiny Tips Classic
From MAFCA Members

PUTTING IN COTTER PINS, by getting the castellated nuts aligned with the hole in the bolt, can be difficult for those of us whose eyesight isn't what it used to be or who are working in poor light. But a little preparation will make cotter pin assembly much easier.

Before you get out your wrenches, reach for a fine-tooth file with at least one good corner. I use a small, triangular file to put a shallow, but very visible cut on the thread end of the bolt, running parallel to the hole for the cotter pin.

This makes it much easier to line up the notches in the nut with the fine cut on the end of the bolt — and have the hole in line for the cotter pin.

Bend the long arm of the cotter pin over the end of bolt to conceal the mark. ☹



This Tiny Tip originally appeared in the November/December 1987 issue.

From "The Restorer"
Magazine

How America Joined Its Two Great Loves, Cars and the Outdoors

Auto camps were all the rage in the 1920's

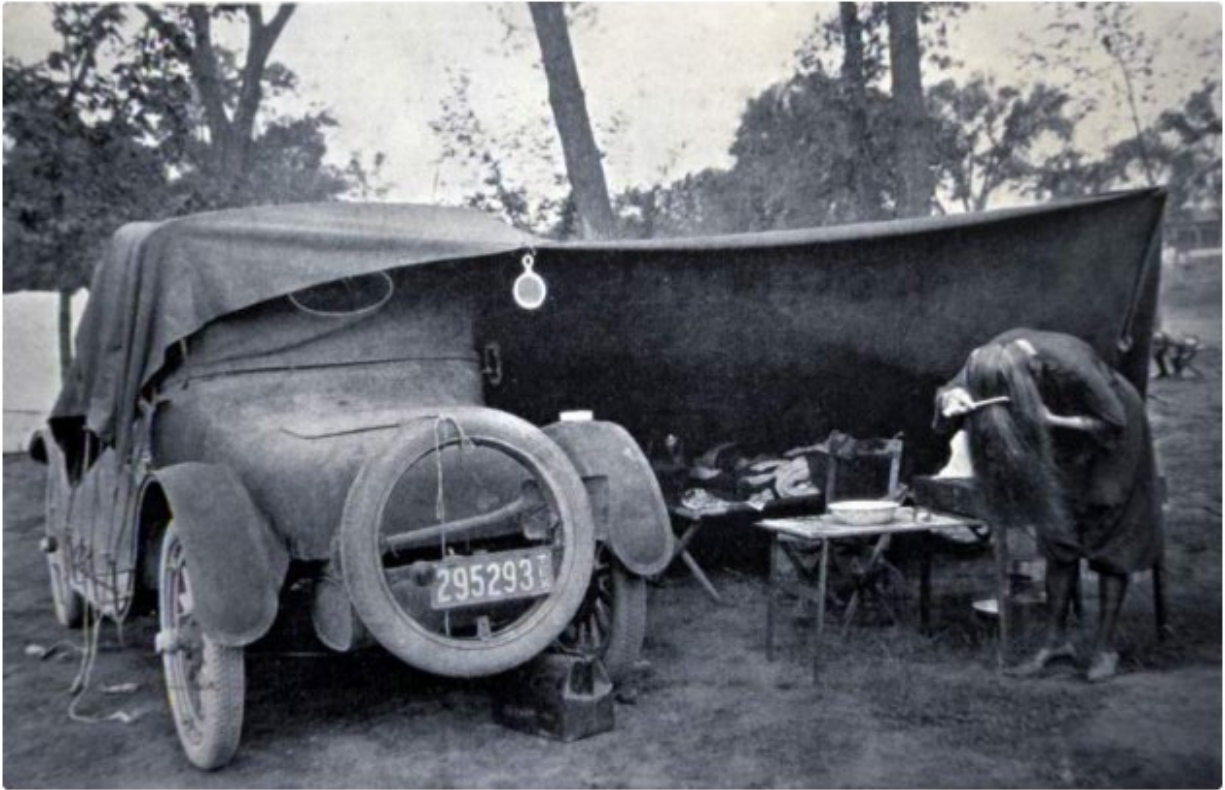


One summer weekend in 1921, President Warren G. Harding went car camping. He rode out to western Maryland, where a fleet of cars awaited: under a soaring white tent, the president dined in the wilderness with Henry Ford, Thomas Edison and the other “Vagabonds,” who had spent every summer since 1914 exploring the country in a caravan of cars. Each year, their set-up grew more elaborate: in 1919, their camping trip required 50 cars, including one specially built to keep their food refrigerated.

Each year, the group picked a different destination. They might wander through the Smokies or up into the Adirondacks, or across New England, enjoying the outdoors and each other's company around the campfire. And while the Vagabonds set-up might have been luxe for the era, they were enjoying the pinnacle of a fad that was sweeping America.

For a few short years, from about 1913 to the early 1920's, auto camping was all the rage. As new owners of automobiles, Americans were learning what it felt like to get in their cars and drive, away from the city, away from responsibility, away from real life. Although this trend lasted just a few years, it laid the groundwork for the ways Americans would travel for years to come; auto camps were the precursor to both motels and RVs.

Source: Atlasobscura.com



A car camper does a little rustic grooming in Rocky Mountain National Park during the 1920s.

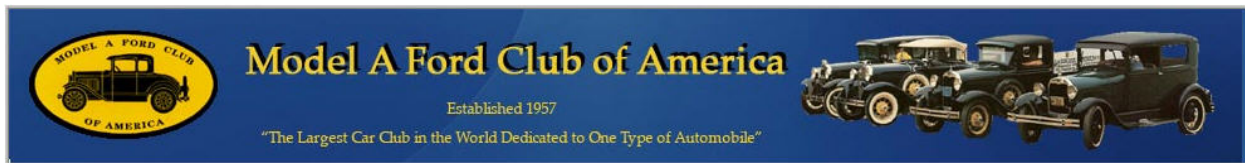
The objective of those tent camping vacations was (and continues to be) to live in the outdoors as comfortably as possible - with just the clothing and equipment that could be transported to the campsite in the automobile (or on a motorcycle). To help families enhance their comfort, several books and magazine articles were published in the early 1900s explaining how to eat, sleep, and relax in the wilderness.



Henry Ford and Friends Camping in the Great Smoky Mountains

Over the past 50 years, the combination of poorly planned trips - plus exaggerated stories about human and animal attacks, lack of familiarity with modern camping equipment, heavy marketing of motels and RVs, and the difficulty of identifying safe campgrounds in unfamiliar regions of the country - have negatively impacted the popularity of family tent camping vacations in some regions of the country. Although a few recent books have tried to explain how to make tent camping more comfortable, these books have failed to include up-to-date information about where to find the best equipment, how to find the safest and most comfortable campgrounds, and how to live comfortably in the great outdoors.

Source: Moderntentcamping.com



Header from the MAFCA Website

From the Desk of the President

June 2021



Get the Mustard and Pickles Ready

Here in the San Francisco Bay Area the tomato plants are beginning to show some signs of bearing fruit. Cucumbers and green peppers have fruit budding also. It is so nice to have longer days and warmer temperatures. All-in-all I would say we have some fine Model A weather.

It's time to polish the old car and get ready for tours and parades. The picnic basket is waiting to be pulled from the shelf where it has been sitting for over a year. The ice chest is ready for a new batch of hot dogs and brats, beverages of choice and some great chocolate chip cookies.

I even have an inexpensive moving blanket to put on the ground for our picnic once we get to our destination. I might have scored more points if I had picked a location with picnic tables, but blankets are romantic. Getting up again is the challenge and not at all romantic. I look really funny as I maneuver into a vertical position.

Getting behind the wheel of Billy-Bob once more isn't quite like riding a bike. I find that I have to stop and think about the mental checklist for the Model A starting procedure. Even the battery is eager to get going. It has held its charge for several months longer than anticipated. Check the oil, still clear and up to the full line on the dip stick. Transmission, differential, brakes, and front hub lubrication are all up to snuff. Time to take the jack out from under the car and run the old boy around the block just to test all systems. Then, try to remember the shut-down procedure.

I'll tell you, Model A's are so different from modern iron that they actually get the driver "involved" in operating the vehicle. What fun is that? Even the horn works with a little tweak of the adjustment screw. I think we're ready to chill the drinks and get the show on the road. This time, we are going to cook the hot dogs on the manifold as we drive.

I hope to see you along the Model A roads.

Bill Truesdell
2021 President

MAFCA Information

The **Model A Ford Club of America, Inc. (MAFCA)** is a California non-profit corporation and a national historical society dedicated to the restoration and preservation of Model A Ford vehicles as manufactured from 1928 through 1931. MAFCA's members are dedicated to the restoration, preservation, and enjoyment of Ford vehicles of that era. MAFCA is the largest club in the world dedicated to one make of automobile. Volcano A members are urged to join the Model A Ford Club of America, Inc. Visit the MAFCA website for a membership application. Dues are \$50 yearly and include a subscription to **The Restorer**.

Looking One's Loveliest in 1929 *A Pictorial Summary of Model 'A' Fashions*

By Jill Barrett, Santa Clara Valley Chapter, California



Waistlines were creeping upwards with waist lines at the top of the hips and a seam curving upward to suggest a higher line seen in the gold dress below. The hem line was widened with flares placed low on a circular skirt.

Evening and afternoon tea dresses might have an uneven hemline or trailing scarf. As a rule, the 1929 hemline was 3" below the knee, the length of the dress at the back hem for misses was 42", stout women was 45" and petite was 40-41".



Deep cape collars were shown and cape fashions were smart and sporty for active lives and daytime clothes similar to ones in the MAFCA Fashion Guidelines. The sport frocks were designed with practical lines similar to general utility wear, the main difference was the utility frock had sleeves and the sport fashion was sleeveless and generally worn under a short jacket.

Next installment of this article will be in the May Newsletter or you can see the article at the Mafca site below.

<https://www.mafca.com/downloads/Fashions/Articles/Looking One's Loveliest in 1929 2021 03.pdf>

MAFFI Newsletter Minute

May 2021

Our Annual Model A Day is fast approaching and since our last year's event had to be postponed to this year, all of our displays are already in place, just waiting for your arrival! We talk a lot about all of the beautiful cars that are on display in the Museum, but did you know that there are many era fashions that are also on display year-round. Our museum fashion director, Linda Morford does such an excellent job of keeping these displays fresh and ever changing. This year we have changed out a couple of our mannequins to wear our First Responder outfits.

If you have been to the museum in the past, you may have noticed "Dolly" donning her lovely vintage housedress and apron. This year, Dolly has been transformed into Nurse Dolly. Her uniform is thanks to a find by Executive Director, John Marshall and the beautiful cape came from Julie Kluttz, of the MARC Fashion Committee. Don't worry, she will have white shoes by Model A Day!

Officer Delaney was once our Good Humor Ice Cream man. He now proudly wears an authentic Police Uniform also donated by John Marshall.

Our fireman (yet unnamed) is wearing a complete era fireman's outfit thanks to Ken Ehrenhofer. I was there when they were dressing this guy and let me tell you, it's not easy putting those boots on a mannequin! A hole needed to be cut in one of the boots in order for it to fit onto the stand. Fire boots were not meant to be cut into!



Hopefully, you will be able to make it to Model A Day September 18th, to see these wonderful displays in person. For more information go to our website at: maffi.org. Start making your plans now, it's gonna be great!

See you in September!!



Can you find the nine things that are different?



Answers to the photo puzzle are on the next page.

Jim's Technical Tip



copywrite Frisco illustrationsOf.com/89401

Jim's technical tip

by Jim Cannon,

Mechanic's Gloves are Great!

I resisted wearing mechanic's gloves for many years when working on my old cars. I didn't think I needed them. Let me tell you, I was wrong! They are great!

I found a pack of 15 pair of work gloves on Amazon for \$10 last year, and I am now a believer. They are branded "Grease Monkey". They are red woven gloves that have dipped the fingers and palm into a rubbery polymer that gives grip and protection. You can use them and when they get too greasy, dirty, or torn up, you throw them away and don't feel too bad, because they're only 75 cents a pair.



They help me grip things better, they keep my hands cleaner, the open weave does not make my hand sweat too much, and I am now avoiding a lot of the scrapes, cuts and bruises that I used to get when working on my cars. I do have to remove them for very fine work, but for most of my wrenching, they really help.

And after using them for a year now, I have another low-tech Tech Tip for you: Take a black marker and draw a 3" to 4" line up the back of the left glove every time you pull a new pair out of the package. When you grab a pair off the bench or out of a toolbox to put on, You will quickly spot that black line up the back of the left glove and get the gloves on the right hand the first time. (Lefts and rights look identical at first glance.)

For 75 cents, you'll throw a pair in each car, in your toolbox, and out in the tool shed. What a deal! Until next time,

"Have a Model A Day!"
Jim

Photo Puzzle Answers

1. Trees missing in upper center.
2. Cabin door moved.
3. Stair porch post missing.
4. Right building's window missing.
5. Right buildings smokestack missing.
6. License plate missing on second car from left.
7. Sign over door missing.
8. Dark area going up stairwell different.
9. White stain on right side of left building changed.

For Sale Items or Wanted

To place an "Ad" send your information to rusunen@comcast.net, or call Bob Rusunen at 360-828-5317

FOR SALE: 1929 Model 'A' Phaeton - Rose Beige and Seal Brown with Orange stripe and wheels. Recently balanced engine, full flow oil filter, modern 4 speed overdrive transmission, 12V negative ground alternator, FS (First Street) transistor ignition, halogen headlights, LED taillights, turn signals, oil, temp, voltage and tach gauges, mechanical brakes, F1 steering box, front toolbox, Kari-Keen style trunk, good paint, particularly good top, interior plating. Great touring/parade car. \$25,000.

Questions: Randy Minton at 817-657-4519. Owner Jean Caddell 817-732-6556. Car located in Benbrook, TX.



1930 Model A Ford Coupe.

Always garaged, H & H Touring Engine (with about 950 miles on new engine), with overdrive, 16" wheels, mechanical brakes, rumble seat, windshield wiper, mechanical temp gauge, and other extras.

It has always been garaged and has little if any rust. Looking back through two completely full file folder of history, receipts and when-where restoration was done. I believe the restoration was completed in 1956.

Located in Visalia, CA. Price: \$12,900.00

Contact: Gary Main.

Email: gary@mainturbo.com
(559) 635-3322



FOR SALE: 1929 MODEL A Standard Roadster



This 1929 Roadster (40A) was restored by a family in Bakersfield, California. It was purchased in the mid 1950's and first licensed in 1959. I am likely the third owner. The car is still in quite excellent condition and runs well. Much is still original such as the 6V electrical system, generator, and brakes. It has no overdrive but does well at limited highway speeds.

It has a GAZ Engine that was purchased and installed by the restorer in the early 1960's. The GAZ engine was manufactured in Russia and used the Ford Model B design. The engine has been given new stainless-steel valves, one-piece valve guides, and has had the lower engine (rods and mains) clearances set. The engine has never been rebuilt or bored and still maintains the standard bore and pistons. If the GAZ Engine is not of interest, I will include one or two standard Model A engines (in undetermined condition) at no cost. The car has a 6-blade fan, modern points, refurbished mechanical brakes, hand built trunk, and newer replacement top (no side curtains). The interior is in great shape however it does not have the original stitching design. The tires are in excellent condition but older in age. Paint is in excellent condition and there is no rust or body damage...it is all-steel.

Priced at \$16,000 firm. The car is in Bend, Oregon and I have an array of additional photos that are available to forward via internet. I can also send any specific photos to anyone who would like to see specific images.



Contact information: Lee Thorsell, Bend, Oregon, 541-330-8907, leethorsell@gmail.com

For Sale 1929 Model A Ford - \$10,500 (WA - Vancouver)
Restored to Original. 4 door Sedan

Contact Chuck to View
360-921-8328 Text or Call.



Support Our Local 2021 Club Suppliers


BECKER'S LLC est. 1965
 'T' and 'A'  Parts
 P.O. Box 374 - Eagle Creek, OR 97022-0374
 (503) 367-9676
 beckersautoparts@yahoo.com

Benny Bennett Holly Bennett

 4219 St. Johns Rd NE • Vancouver, WA 98661 • (360) 993-0284
 www.bennyspizzacafe.com


 HOUSEHOLD • AUTOMOTIVE • CUSTOM

 Mark Stillman 1501 NE 99th St.
Vancouver, WA 98665
(360) 573-7133
 www.bobspaintland.com

C'S AUTO MACHINE SHOP

- FLYWHEEL GRINDING
- RESURFACING
- BORING
- THERMAL CLEANING
- ROD REBUILDING
- BLOCK DECKING

- VALVE GRINDING
- ENGINE REBUILDING
- KNURLING
- PIN FITTING
- PRESS WORK
- ROTORS & DRUMS

JIM
574-4934 EDM
SPECIALISTS IN
REMOVING BROKEN TAPS,
DRILLS, STUDS & EASY-OUTS

OPEN M-F, 8 am-6 pm
 800 NE 86th Street
 Vancouver, WA 98665

We Save You Money www.CostLessAutoParts.net
Cost Less Auto Parts™
 "NO EXCUSES, Get it done!"

Orchards
 360-254-5710

Hazel Dell
 360-695-4423

Kelso
 360-353-5956


HART RADIATOR
 Complete Radiator Service
 501 Grade Street, Kelso
 Fax 360-425-1189
 Auto, Truck & Industrial
 Radiators, Heaters, & Air Conditioners
360-425-6220

Doug Hart
 360-430-3615 Cell
 doug@hartradiator.com

Allen Hart
 360-430-9169 Cell
 allen@hartradiator.com

WHOLESALE FLEET

KEN HEARD
 (360) 256-7985
 (503) 252-5505
 FAX (360) 256-7465
 5913 NE 127TH AVE. #200
 VANCOUVER, WA 98682

Amanda Uthe
 RustyLugParts.com
Rusty Lugs
Rod's & A's

 Open: M-F 9am-5pm 8021 NE 142nd Ave
Vancouver, WA 98682
 Formerly:
 Floyds Model A Parts p. 360-887-3346
rustylugparts@gmail.com



