



Volcano A's, PO Box 970, La Center, WA 98629

www.volcanoas.net

Meeting: Church of the Nazarene - 16850 NE Fourth Plain Blvd, Vancouver, WA - Second Monday of Month - 7:00 PM
 Guys breakfast meeting every Wed. (7:00am) at Hockinson Café, 219 NW 20th Ave, Suite 100, Battle Ground, WA
 Guys lunch on Fridays (11:30 am) at Benny's Pizza & Café on 4219 St Johns Rd NE, Vancouver, WA

Volume 5 Issue 10

October

2016

2015 MAFCA Newsletter Certificate of Merit

2015 MAFCA Website of the Year

2013 MAFCA Newsletter of the Year 2013 MAFCA Website of the Year

2016 Club Officers

President:

Jerry Lane - 360-263-6980
northforkmuseum@gmail.com

Vice President:

Lynn Mattingley - 503-753-1363
lynnmattingley@aol.com

Treasurer:

Linda Willey - 360 687-0916
lindawilley@mac.com

Secretary:

Sherry Rusunen - 360-828-5317
rrusunen@comcast.net

Member at Large:

Leonard Willey - 360-687-0916
lindawilley@mac.com

Past President:

Jack Dusenberry - 360-256-0149
jdsie@comcast.net

Editor/Webmaster:

Bob Rusunen - 360-828-5317
rrusunen@comcast.net

Articles and contributions are encouraged and may be used as space permits. The deadline for all articles is the 20th of the preceding month. The Volcano View is a monthly publication of the Volcano A's Chapter - MAFCA E-mail all proposed articles to: rrusunen@comcast.net.

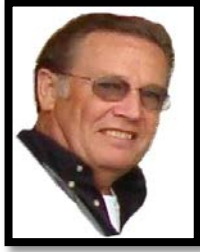
Photo of Month



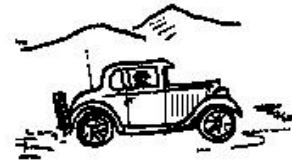
1929 Standard Coupe

Volcano A's License Plate Toppers will be available at the October Meeting for those that ordered one.





President's Note September 26, 2016



This last weekend was a very memorable experience as we traveled to the Central Washington Coast starting in La Center at 9:00 AM Friday morning. We traveled the old Pacific Hwy to Woodland, then I-5 to Longview where John & Diana joined us, then Hwy 4 to Cathlamet where we met Don & Ruby, just prior to that our car was starving for fuel so we pulled over on a straight stretch and a little roadside repair. Pulled the gas line off at the carburetor and blew air back thru the gas tank (my air) and that problem never happened again. After that it was Mike's turn as his self-adjusting head light became loose so another stop for a quick fix. We had lunch in Grays River, then on to Willapa Bay and Westport. At Westport we paraded along the dock for all to enjoy. We pulled over looking across the Harbor enjoying the view and great weather, oh and ice cream cones. Westport was so pleasant it was hard to leave, but was time to travel on to our hotel in Aberdeen. That evening we enjoyed a nice Chinese dinner at the Ocean Palace Restaurant. On Saturday morning we traveled to the Hoquiam waterfront and then on to Ocean Shores and parked at the South Jetty, enjoying scenery and sun. In Ocean Shores we enjoyed lunch at an Irish Pub called Galway Bay. Ocean Shores was our most Northerly destination so we returned back to Aberdeen where we lost Roger to the side of the road, it seems Earl had accumulated at the fuse holder and caused what Roger called an open circuit which meant the starter case was now enjoying the current instead of the points, so the Ace mechanics went to work, but they forgot to throw the ace in the hole and changed every part they could think of and found a short jumper wire around the fuse was the answer. While they fixed Roger's car the rest of us drove to Montesano and out to the Wynoochee Valley to visit Doug & Janet Rice at their Running Anvil Carriage House, their museum of 35 carriages is very impressive, as they have all been restored to new condition. That evening we enjoyed Billy's in Aberdeen for dinner, then in the morning we headed South to Raymond, Pe Ell for lunch at Evey's then Vader to Longview and home. We had a great time with many memorable memories.

Jerry

Committee Chairs

Community Service: Joyce Swartz/Tom Ryan
Garage Workshop: Tom Pagel
Library/Historian: Terry Findley
NW Regional Rep: Jack Dusenberry
Public Relations: Dian Lane
Refreshments Coordinator: Nancy Wooldridge
Sunshine: Pat Dusenberry
Tour Director: Lynn Mattingley



Front Page Photo

Marlin Bonder's 1929 Standard Coupe recently re-built and is in outstanding condition. You should check it out.

Knowledge Nugget

In 1931 a worldwide economic crisis continues as banks all over the world close.

Volcano A's General Membership Meeting Minutes September 12, 2016

CALL TO ORDER: 7:00 pm by President Jerry Lane.

TOURS: Lynn Mattingley reported that the Sept. tour is the President's Tour. Oct. 15th will be the next tour going to the Antique Powerland Museum in Brooks Oregon. We will meet at Jantzen Beach at 9:00 am. More details at the next meeting.

TREASURER: Linda Willey gave the financial report.

EDITOR/WEBMASTER: Bob Rusunen reported the license plate toppers were here and can be paid for and picked up at this meeting. They are \$20.00.

COMMUNITY SERVICE: Joyce Swartz reported that the food collected for July was 279#s. However, Tom Pagel turned in his slips for his produce donated to the food bank in the amount of 2395#s bringing the year's total to 3692#s!! Thank you, Tom!!

SUNSHINE: Pat Dusenberry announced that Darrel Freimuth is in the hospital. Linda Freimuth gave details and asked for prayers.

LAVA LADIES: Sherry Rusunen announced that the Babies-In-Need "Shower" is coming, Sat. Oct. 8th at Rockies Pizza in Battle Ground at 11:30. We have invited the Beaver Babes to join us!! And bring a friend!!

OLD BUSINESS: The minutes were approved by Austin Alling and seconded by Gary Swartz. John Carlile reported that it looks like there will be quite a crowd coming to the Regionals at Coos Bay in 2017!! Jerry thanked all who helped at the La Center Cruise-In especially Ron Hall who headed the crew!! Jack Dusenberry said the seminar tonight would be Rebuilding the front end!

NEW BUSINESS: Jerry Lane discussed the upcoming MAFCA elections, having available info on all candidates. Remember that the Albany Swap Meet is coming Sat. Nov.19th. Jerry Lane said the President's Tour is Sept. 23, 24, 25. Meet in La Center at 9 am.

RAFFLE: Jane Hall won \$40.00. The club gets \$39.00.

REFRESHMENTS: Sandra Guyot & Jann Jones served fruit, nuts and yummy brownies!!

ADJOURNED: Meeting was adjourned by Jerry Lane.

Submitted by Sherry Rusunen



Member Celebrations



Happy Birthdays

- 1 Lynn Mattingley
- 9 Dian Lane
- 9 Bibbi Lee
- 16 Jennie Ryan
- 17 Kathy Neilsen
- 19 Carlene Willis
- 26 Diana Carlile
- 28 Fred Holm
- 30 LeRoy Helyer
- 31 Jane Hall

Factory Photo of the Month



1931 190 A Victoria

Tours

Oct 16 Antique Powerland
Museum, Brooks, Oregon

Nov 11 Ft. Vancouver Veteran's
Day Parade, Vancouver, WA

Community Service

Refreshments

October: Becky Blick & Dianne Ernest

November: Roberta Emerick &
Marylan Kelly

December: Holiday Potluck @ Lane's

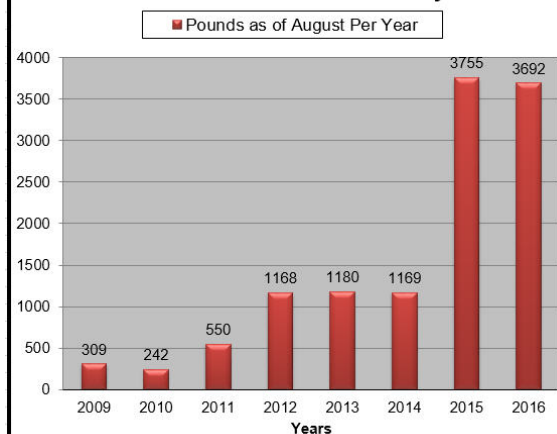
Future Events

Oct 8 Lava Ladies - Babies in
Need - Rocky's Pizza, Battle Ground, WA

Oct 14-15 PIR Fall Auto Swap Meet,
Portland, OR

Dec 12 Christmas Dinner & Auction
at the Lane's Museum

Food Collection & Donations by Year



Note: Periodically some materials printed in our newsletter may have been borrowed from other club newsletters. We thank other clubs for sharing their newsletters with the Volcano A's. Also, when sources are known they will be included.

Membership Updates

Ginny Bay

New address:

Brookdale Vancouver Orchards
10011 NE 118th Ave
Vancouver, WA 8682
360-896-6081 or 360-828-8290

Lynn & Marilyn Elvestrom

New Email:

44mlelvestrom@gmail.com

Diane M. Schroeder

Age 83, Vancouver, died
Sept 16, 2016, Evergreen
Memorial Gardens Funeral
Chapter, 360-892-6060

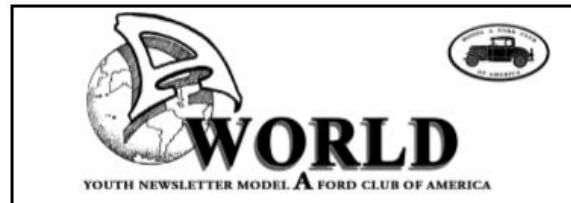
Display Idea

Want a unique shelf
to display your
Model A items?
Here a great idea.

Check out your
dad's garage, or
grandpa's barn, or
maybe even tag
along to the next
swap meet to find
an old radiator shell.



This one has a mirror on the back and glass shelves, but I bet it would look just as awesome using other materials as well.



A-World is published by the Model A Ford Club of America for the benefit of youth and the promotion of the Model A hobby.

Editor: Sherry Winkinhofer



AWorldEditor@hotmail.com

© 2016 All Rights Reserved by

Model A Ford Club of America
250 South Cypress Street
La Habra CA 90631-5515

A-World is free, courtesy of MAFCA. As of May 2016, it will be a web or email only publication. If you wish to have it emailed directly, please sent your address to AWorldEditor@hotmail.com

October 12, 2016



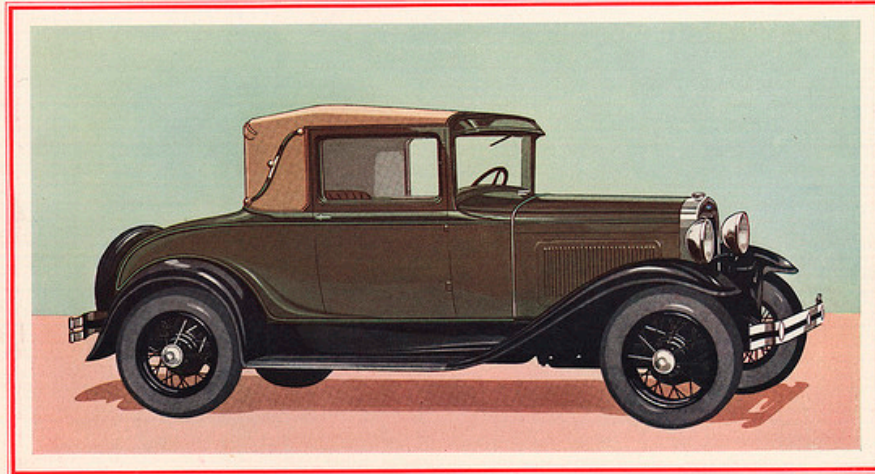
Happy Columbus Day

Model A ERA Clothing Fashions



Source: Phillip Lensen at vintageadbrowser.com

Ford Advertisement



THE NEW SPORT COUPE

In addition to new beauty of line and color, the new Ford bodies bring you still another outstanding feature—non-tarnishing, rustless steel for the radiator shell, headlamps, hub caps, tail lamp, cowl finish strip, radiator and gasoline tank caps. This new metal is better than nickel or chromium plating for the same reason that sterling silver is better than silver plate.

Source: Ford Model A Advertising on Pinterest

Traffic Signal Finders

These handy little gadgets were quite popular in the early days of automobiles. For the Model A, the design with the visor sticking out over the windshield made seeing the overhead traffic signals difficult to see without scrunching down and twisting your neck. These little reflectors worked similar to our modern side mirrors that say “objects in mirror are closer than they seem”. The concave shape makes objects look smaller and closer. It also shows a wider angle view, like a fish eye lens. All in all, they seemed to work quite well as they remained popular throughout the 50’s.

Traffic Signal Reflector

A Glass Lens of Peculiar Half-Moon Shape.



Reflect traffic signals so that you can see "go" and "stop" signs without bending down or taking attention from driving.

VACUUM CUP Type	CLAMP Type
Goes on Windshield (B318)	Goes on Sun Visor (B319)
79c	79c

"MOONBEAM" TRAFFIC SIGNAL FINDER

Neat and Practical!!



This is the new and improved model, with rubber vacuum cup that enables you to attach to inside of windshield. Reflects the lights of traffic signals so that you can watch them, even if placed out of the ordinary line of vision, without taking your attention from driving. **NO CEMENT OR TOOLS REQUIRED.** It shows the light by night or day. Diameter of glass 2".

Note Our Low Price!

9302 — "Moonbeam" Traffic Signal Finder... .69

LEADER TRAFFIC LIGHT DETECTOR



The driver can now be protected by day or night. This simple 2 1/4-inch glass placed on your windshield, at point most convenient to yourself, reflects the overhanging traffic light into your vision. Easily installed with indication of Silicate of Soda. Regular price \$1.00—can be obtained at only 49c.

PEP BOYS STORES

93—Leader Traffic Light Detector... .49

SEE-A-LITE TRAFFIC SIGNAL FINDER



Installed on sun visor, SEE-A-LITE lowers overhead traffic signals to driver's normal line of vision, by its scientifically designed double cylindrical lens. Mounted in beautiful bakelite frame, it is one of the real comforts you can add to your car and which you will use many times every day. **ALWAYS READY DAY OR NIGHT.**

9308—See-A-Lite Traffic Signal Finder... .69

Source: MAFCA Youth Newsletter- Third Quarter

Ford Richmond Assembly Plant - Ford in the Bay Area



The Ford Motor Company's presence in the San Francisco Bay Area mirrored the company's national pattern of first establishing a branch agency and then a branch assembly plant. Ford's first San Francisco branch, located at Van Ness Avenue and Fell Street, opened in 1911. It received cars assembled in Detroit that had been knocked down for shipment by rail. Mechanics at the San Francisco branch put wheels back on the cars and readied them for sale at the branch or for delivery to dealers elsewhere in the area. In 1912, branch manager J.B. Lund hired Clarence Bulwinkel, a San Francisco native and recent graduate of Lowell High School, to work in the tool and stock department with the promise to move into an office job when an opening occurred. Shortly thereafter, Bulwinkel accepted a job as bookkeeper in the branch office. At about that time, the Ford Motor Company was making plans to build an assembly plant in San Francisco. Officials selected a site at Harrison and 21st Street, built a new five-story building, and hired local workers with no prior experience on automobile assembly lines. The new assembly plant was typical of Ford branch plants of the 1910s: they were multi-storied and located along railroad tracks in the heart of the city, where they could serve as both assembly plants and sales branches. All manufactured car parts and components arrived from Detroit by rail. The new San Francisco branch assembly plant ran its first Ford car off the line in late 1913.

The company next decided to install an assembly line at the 1915 Panama Pacific International Exposition in San Francisco. Frank Vivian, who later would become important in the World War II activities at the Richmond plant, was placed in charge of the special exhibit in which Ford cars were assembled in public view and made available to car dealers waiting at the end of the line. Shortly after the exhibition ended, the San Francisco branch plant ceased selling cars directly and began serving only as an assembly plant and as a wholesale outlet for dealerships elsewhere. Bulwinkel worked his way up the Ford organization in San Francisco to the position of assistant manager before being transferred to Portland, Oregon, in 1926 to manage the branch plant there. He was transferred back to take over the San Francisco plant as manager in 1930, about the time construction of the new Richmond plant began. The San Francisco plant was producing about 200 cars per day in 1930, but by then it had grown relatively inefficient. As a multi-story building, it relied on elevators to move components and partially assembled vehicles from floor to floor. The freight elevators had been designed for the Model T, but by 1930 Ford was producing the Model A. Therefore, very little of the equipment from the San Francisco plant was moved to Richmond.

Source: Fordmotorhistory.com

Tech Q&A - Tips from MAFCA Members

12 VOLT OR 6 VOLT?

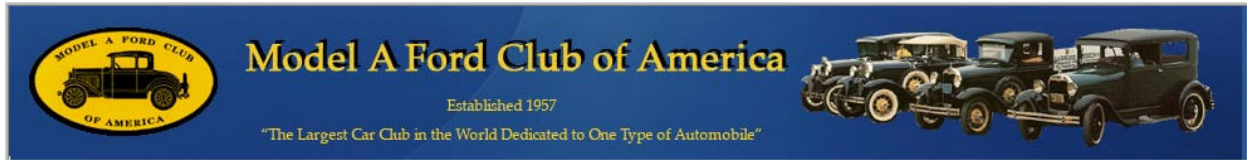
Question: I have owned Model A's for 40 years and I just purchased a 1930 Model A Dlx. Coupe all restored & beautiful. The only thing is they put a 12 volt alternator that reads 12 volt negative ground. I have the car at a friend's house waiting to make space to bring it home so I have not gone through it yet. My question is that it appears that they put a 12 volt alt. & battery because the car spins over very fast but it seems like the wiring is correct looking for 6 volts? Could someone convert to 12 volt without changing the wires? and if so I assume the bulbs must be 12 volt as well. I am not good when it comes too electrical. Would the stock wiring hold up for 12 volt?

Thanks, [Joe Todaro](#), Bedford Hills New York

Answer: One of the reasons the auto industry converted to 12-volts in the '50's was to reduce the cost of the automobile. When the electrical system is changed to 12-volts the amount of current (amps) is reduced to maintain the same electrical power (watts). With the reduction in current in the system the size of the wire can be reduced, therefore saving money.

As the original system wiring is designed for the 6-volt system the wire size is actually heavier than necessary. This doesn't cause any problems in the system. As for the light bulbs, these would also have been changed to 12-volts. This will also affect the horn, either it has been re-wired for 12-volts or a voltage reducer has been installed to reduce the voltage to the horn to 6-volts. The ignition coil would also have been changed or a voltage reducer installed in series for it also. You might wish to contact the previous owner and determine what was actually done when the conversion was done. - **Chuck Christensen**, 2011 MAFCA Technical Director - **posted 12/10/11**

MAFCA Tech Q & A -Electrical Tips



Header from the MAFCA Website

MAFCA President's Page - Alex Janke - September 2016



International Model A Day is September 10th, don't forget to drive your "A" on a tour, to the grocery store, or around the block. The idea is it to get them all on the road. The weather has been strange across the country with flooding, excessive heat, and wildfires. I hope all of you are safe and getting to enjoy your Model A's in spite of these challenges.

Membership renewal and ballots are coming in. If you haven't already sent in your ballot, please do so as everyone's opinion counts. Ballots must be **received by October 15** to be counted, and they will be counted on October 22. We will post the results on the website as soon as they are available.

The Model A Ford Club of America (MAFCA) Board of Directors will hold its next meeting at the Kalamazoo Four Points Sheraton Hotel on Friday, September 16th beginning at 8 AM. The Board would be pleased to have local Model A hobbyists attend as they conduct the business of MAFCA. The Four Points Sheraton is located at 3600 E Cork St., Kalamazoo, MI 49001.

Saturday, September 17th is Model A Day at the Gilmore Museum. It will be a great all day event with seminars, a swap meet, and of course Model A fellowship. Several hundred Model A's attend. The Board will be there and we look forward to seeing and talking with our members.

We are receiving a great response to the digital *Restorer* along with the hard copy. It seems many of you want the magazine with you and on your computer. We currently plan to keep issues on line for three years, so ultimately there will be 18 issues available for viewing. The number on line may change overtime.

Christmas Cards are selling well and the pre-orders of the *Restoration Guidelines and Judging Standards Revision 4* are coming in. Delivery is currently planned for October. The Shop Drawings are also very popular. Our newest book, *The Fashion Files* is also available. This book is 202 color pages and is a collection of Era Fashion Articles written by MAFCA members over the years. We selected the very best and assembled them in a single volume - order soon. By the way guys, *The Fashion Files* makes a great Christmas present.

This year seems to be flying by and the National Awards Banquet in Reno is only three months away. Registrations are coming in for the event on December 5 thru 8. I urge you to attend, as the banquets are always fun and relaxing. Reno, Nevada has excellent weather this time of year. Reno is located just east of the Sierra Nevada Mountain range and offers spectacular views. Our website has more information and registration forms mafca.com/2016NAB.html.

The entire Board of Directors is dedicated to our membership and providing the best possible service to our hobby. Please contact us with your ideas, concerns, complaints, and praise. I can be reached at president@mafca.com and I will respond. Hope to see you on the road soon.

2016 National Awards Banquet Reno, Nevada

Hosted by The Sagebrush Chapter



2016 National Awards Banquet
Reno, Nevada - Peppermill Resort
December 5-8, 2016

\$59 per night, if booked by November 2

Come learn the history of the Lincoln Highway.

Enjoy a private Era Fashion dinner party at the
National Automobile Museum

Visit Virginia City, home of Christmas on the Comstock.



Lava Ladies



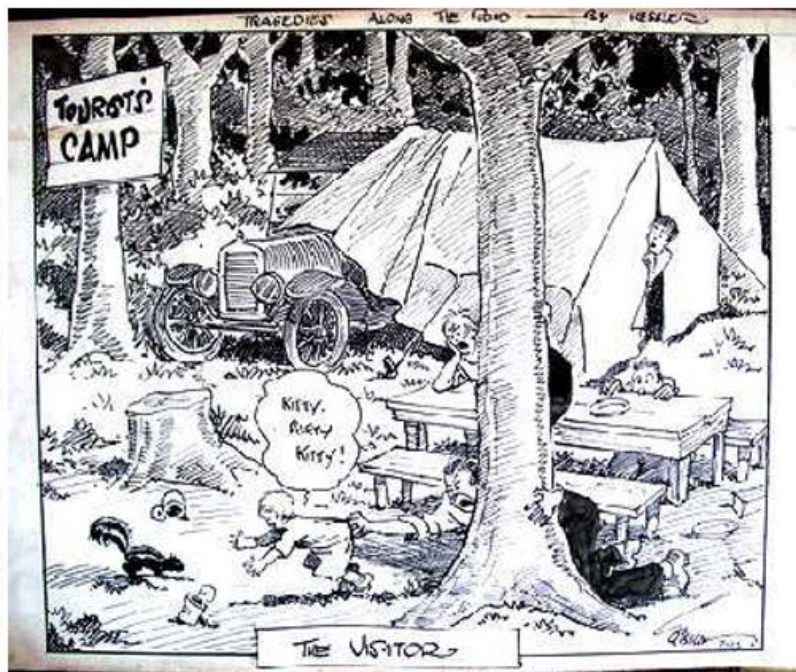
Remember October 8th will be our Babies in Need luncheon at Rocky's Pizza 11:30am. Here's the perfect excuse to buy baby clothes and feel good about donating them for those in need. The more the merrier so please bring a friend, we'll have lots of room and the pizza buffet is awesome.

Car-Toon

A little Era humor! It's titled "Tragedies along the road".

Did you know they actually did sell tents that included your car as one side? Apparently people slept in the cars, at least that's what the catalogs selling beds that sit above the seats show. Auto part catalogs used to sell these items, along with camping equipment such as dishes and stoves right along side the car parts!

Camping became much more popular once cars made it so much easier to travel. It was one of the first times that people started to travel just for fun, and not just to get from one spot to the other.



Source: MAFC Youth Newsletter- Third Quarter

Pictures from the President's Tour



A small Petroleum station in LA selling "Mobil" fuels and oils



Pan American Petroleum Company was an early refiner (1916) that eventually became a part of Standard Oil of New Jersey, and later on became the Amoco brand in the fifties. The attendant is posing with an oil dispenser.

Source: The Old Motor.com

For Sale Items or Wanted

To place an "Ad" send your information to rrusunen@comcast.net, or call Bob Rusunen at 360-828-5317

Update: Price Reduced to \$16,000



For Sale: 1931 Tudor Sedan Model A Ford

**\$18,000.00 cash/no trades
Albany, Oregon**

- ❖ Good driver, 200 Miles on complete overhaul (insert bearings)
- ❖ Synchronized transmission, Mitchell overdrive, Hydraulic brakes
- ❖ F150 steering box, 17" powered coated rims w/Toyo radial tires
- ❖ Electronic Ignition and many extras.....

Call Gene: cell: 541.619.5250 home: 541.926.6390

I would be happy to e-mail a list of all items that have been added.


Support Our Club Suppliers

A&B
Radiator & Speedometer Service

*Also Specializing in:
 A/C Service Heater Installation
 General Auto Repair*

8411 E. Fourth Plain (360) 256-1560
 Vancouver, WA 98662 (360) 254-8329

Benny Bennett Holly Bennett



Benny's Custom Pizza Cafe

4219 St. Johns Rd NE • Vancouver, WA 98661 • (360) 993-0284
 www.bennypizzacafe.com

Bob's PAINT LAND
 HOUSEHOLD • AUTOMOTIVE • CUSTOM

Mark Stillman 1501 NE 99th St.
 Vancouver, WA 98665
 (360) 573-7133

www.bobspaintland.com

C'S AUTO MACHINE SHOP

- FLYWHEEL GRINDING
- RESURFACING
- BORING
- THERMAL CLEANING
- ROD REBUILDING
- BLOCK DECKING
- VALVE GRINDING
- ENGINE REBUILDING
- KNURLING
- PIN FITTING
- PRESS WORK
- ROTORS & DRUMS

JIM
574-4934 EDM
 SPECIALISTS IN
 REMOVING BROKEN TAPS,
 DRILLS, STUDS & EASY-OUTS

OPEN M-F, 8 am-6 pm
 800 NE 86th Street
 Vancouver, WA 98665

We Save You Money www.CostLessAutoParts.net

Cost Less Auto Parts™

"NO EXCUSES, Get it done!"

Orchards 360-254-5710
Hazel Dell 360-695-4423
Kelso 360-353-5956

DIVERSIFIED WELDING WORKS, INC.
 Industrial Welding and WaterJet Cutting

WILL BINNS
 PRESIDENT

willb@diversifiedweldingworks.com

360-576-0929 • 877-835-0724 • 360-573-0824 Fax
 8009 NE 19TH COURT • VANCOUVER, WA 98665



HART RADIATOR
 Complete Radiator Service

501 Grade Street, Kelso
 Fax 360-425-1189

*Auto, Truck & Industrial
 Radiators, Heaters, & Air Conditioners*

360-425-6220

Doug Hart 360-430-3615 Cell Allen Hart 360-430-9169 Cell



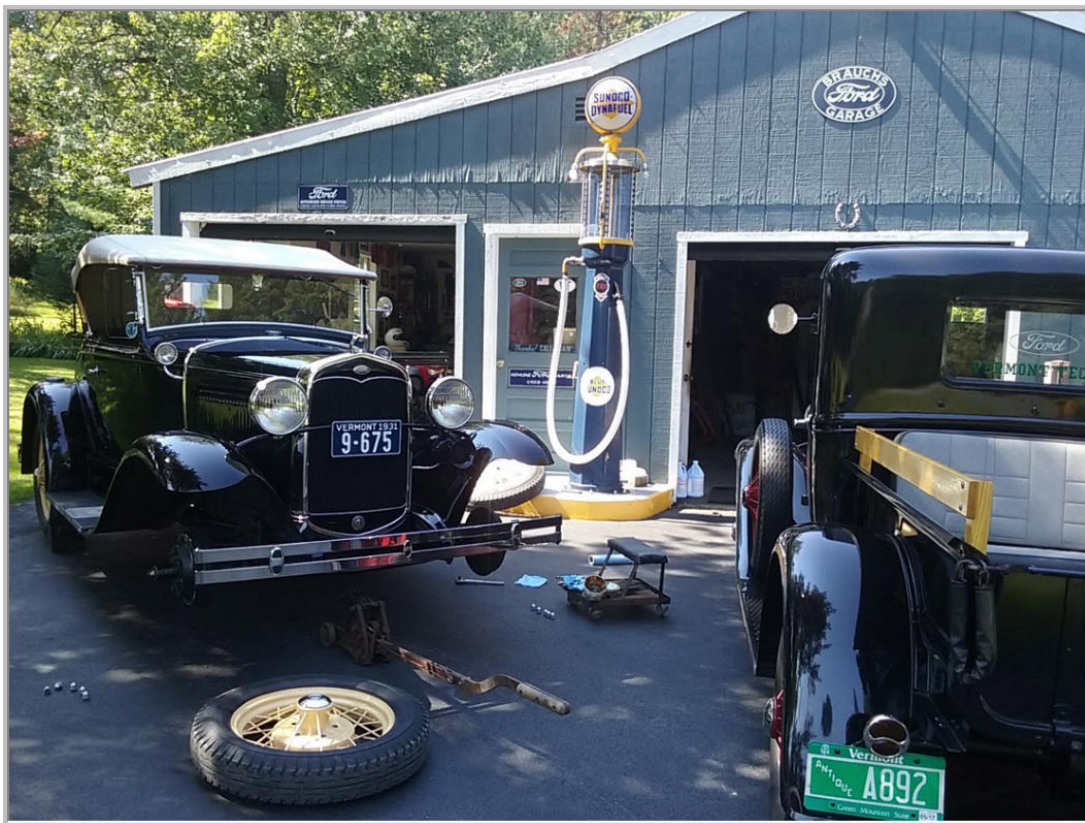
RUSTY LUGS

SPECIALIZING IN MODEL A'S

Amanda Uthe
 Owner

360-887-3346 M-F 9am-5pm
 8021 Ne 142nd ave
 Rustylugparts.com Vancouver, Wa 98682

Volcano View Newsletter
Bob Rusunen, Editor/Webmaster
3720 NW 116th Street
Vancouver, WA 98685



Courtesy from MAFCA - "A" of the Day photos