



Volcano A's, PO Box 970, La Center, WA 98629

www.volcanoas.net

Meeting: Church of the Nazarene - 16850 NE Fourth Plain Blvd, Vancouver, WA - Second Monday of Month - 7:00 PM

Guys breakfast meeting every Wed. (7:00am) at Hockinson Café, 219 NW 20th Ave, Suite 100, Battle Ground, WA

Guys lunch on Fridays (11:30 am) at Benny's Pizza & Café on 4219 St Johns Rd NE, Vancouver, WA

Volume 5 Issue 9

September

2016

2015 MAFCA Newsletter Certificate of Merit

2015 MAFCA Website of the Year

2013 MAFCA Newsletter of the Year 2013 MAFCA Website of the Year

2016 Club Officers

President:

Jerry Lane - 360-263-6980

northforkmuseum@gmail.com

Vice President:

Lynn Mattingley - 503-753-1363

lynnmattingley@aol.com

Treasurer:

Linda Willey - 360 687-0916

lindawilley@mac.com

Secretary:

Sherry Rusunen - 360-828-5317

rrusunen@comcast.net

Member at Large:

Leonard Willey - 360-687-0916

lindawilley@mac.com

Past President:

Jack Dusenberry - 360-256-0149

jdusie@comcast.net

Editor/Webmaster:

Bob Rusunen - 360-828-5317

rrusunen@comcast.net

Articles and contributions are encouraged and may be used as space permits. The deadline for all articles is the 20th of the preceding month. The Volcano View is a monthly publication of the Volcano A's Chapter - MAFCA E-mail all proposed articles to: rrusunen@comcast.net.

Photo of Month



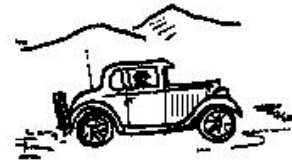
1940's Doodlebug Tractor

Autumn begins September 22





President's Note ***August 15, 2016***



I would like to thank everyone who has volunteered for helping at La Center's Car Cruise In and Pit Stop coffee especially Ron Hall and Bob Huset for being ring masters and tallying up the points for category winners.

Here are the dates and information for the President's Tour: we will be touring September 23rd, 24th & 25th and we will travel to the Washington Coast starting from La Center at 9:00 AM. We will take I-5 to Longview; 27 miles, Longview to Grays River to Raymond; 48 miles, Raymond to Westport; 33 miles, Westport to Aberdeen; 21 miles, and Aberdeen to Montesano; 11 miles. Friday stops and meals will be Grays River Covered Bridge, coffee break in Grays River at Duffy's Irish Pub, Lunch in Raymond at Slaters Diner, Westport waterfront and dinner in Aberdeen at Billy's Bar & Grill. Saturday activities listed are: Lake Sylvia State Park, Running Anvil Carriage House, Hoquiam Boardwalk and Aberdeen waterfront. We will be staying both Friday & Saturday nights in Aberdeen at the Best Western Plus. On Sunday returning home we will travel Hwy 101 Aberdeen to Raymond, Hwy 6 Raymond to Pe Ell and Vader Hwy 411 Vader to Longview and I-5 Longview to home.

To make your hotel reservation please call Best Western Plus at 360 537-7460 and tell them you are with the Volcano A's car club.

See you in La Center 9:00 AM Friday, September 23rd for an interesting coast tour.

Jerry

Committee Chairs

Community Service: Joyce
Swartz/Tom Ryan

Garage Workshop: Tom Pagel

Library/Historian: Terry Findley

NW Regional Rep: Jack Dusenberry

Public Relations: Dian Lane

Refreshments Coordinator: Nancy
Wooldridge

Sunshine: Pat Dusenberry

Tour Director: Lynn Mattingley



Knowledge Nugget

On April 1, 1913, first experiments with assembly line began at Highland Park Plant. Early trials with assembly of components like magnetos and transmissions are followed by development of chassis assembly line in August 1913.

Front Page Photo

John Carlile's homemade Doodlebug Tractor, unmistakable DNA. Parked in a field over twenty years. Started in 4 hours.

Volcano A's General Membership Meeting Minutes
Sunday August 7, 2016

CALL TO ORDER: 10:30am by President Jerry Lane

GUESTS: N/A

TOURS: Jerry Lane announced that our tour today would be a drive to the Woodland Bottoms by the Columbia River.

TREASURER: Linda Willey gave the financial report. She also asked that a motion be made for an expenditure of \$1029.80 for the license plate toppers. A motion was made by John Carlisle and seconded by Corley Wooldridge that the money be paid. Motion passed.

EDITOR/WEBMASTER: Bob Rusunen announced that the license plate toppers were ordered. They will be \$20.00 each. He asked that those present who wanted one to please prepay today.

COMMUNITY SERVICE: N/A

SUNSHINE: N/A

LAVA LADIES: Sherry Rusunen reminded everyone of the Babies In Need "Shower" on Sat. Oct. 8th at Rocky's Pizza. Bring a friend!!

OLD BUSINESS: N/A

NEW BUSINESS: Jerry Lane announced at the Picnic that the President's Tour will be Sept. 23rd through the 25th or 26th. The destination will be announced at the next meeting.

RAFFLE: N/A

REFRESHMENTS: The picnic was a delicious potluck. Thanks to all who attended!!

ADJOURNED: Meeting was adjourned by Jerry Lane.

Submitted by Sherry Rusunen.

Member Celebrations



Anniversaries

6 Richard & Sandra Pargman
7 Darrel & Linda Freimuth
12 Ron & Jane Hall
13 Raymond & Kathy Neilsen
14 Don & Ruby Knudsen
17 Jerry & Dian Lane
20 Sam & Connie Salzman
23 Deon & Diane Schroeder

Happy Birthdays

13 Ginny Bay
13 Sharon Cook
13 Bryan Sutherland
22 Jack Dusenberry
28 Richard Simpson
30 Sherry Rusunen
30 Ken Viles

Refreshments

September: Sandra Guyot & Jann Jones

October: Becky Blick & Dianne Ernest

November: Roberta Emerick & Marylan Kelly

December: Holiday Potluck @ Lane's

Factory Photo of the Month



1928 40-A Std. Convertible Roadster

Tours

Sep 23-25 Annual President's Tour to the Washington Coast

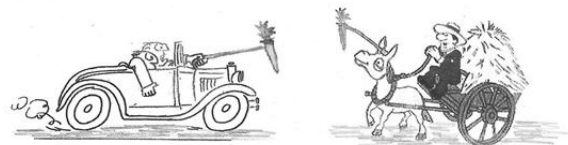
Nov 11 Ft. Vancouver Veteran's Day Parade, Vancouver, WA

Future Events

Oct 8 Lava Ladies - Babies in Need - Rocky's Pizza, Battle Ground, WA

Oct 14-15 PIR Fall Auto Swap Meet, Portland, OR

Dec 12 Christmas Dinner & Auction at the Lane's Museum



Note: Periodically some materials printed in our newsletter may have been borrowed from other club newsletters. We thank other clubs for sharing their newsletters with the Volcano A's. Also, when sources are known they will be included.

Ford Advertisement

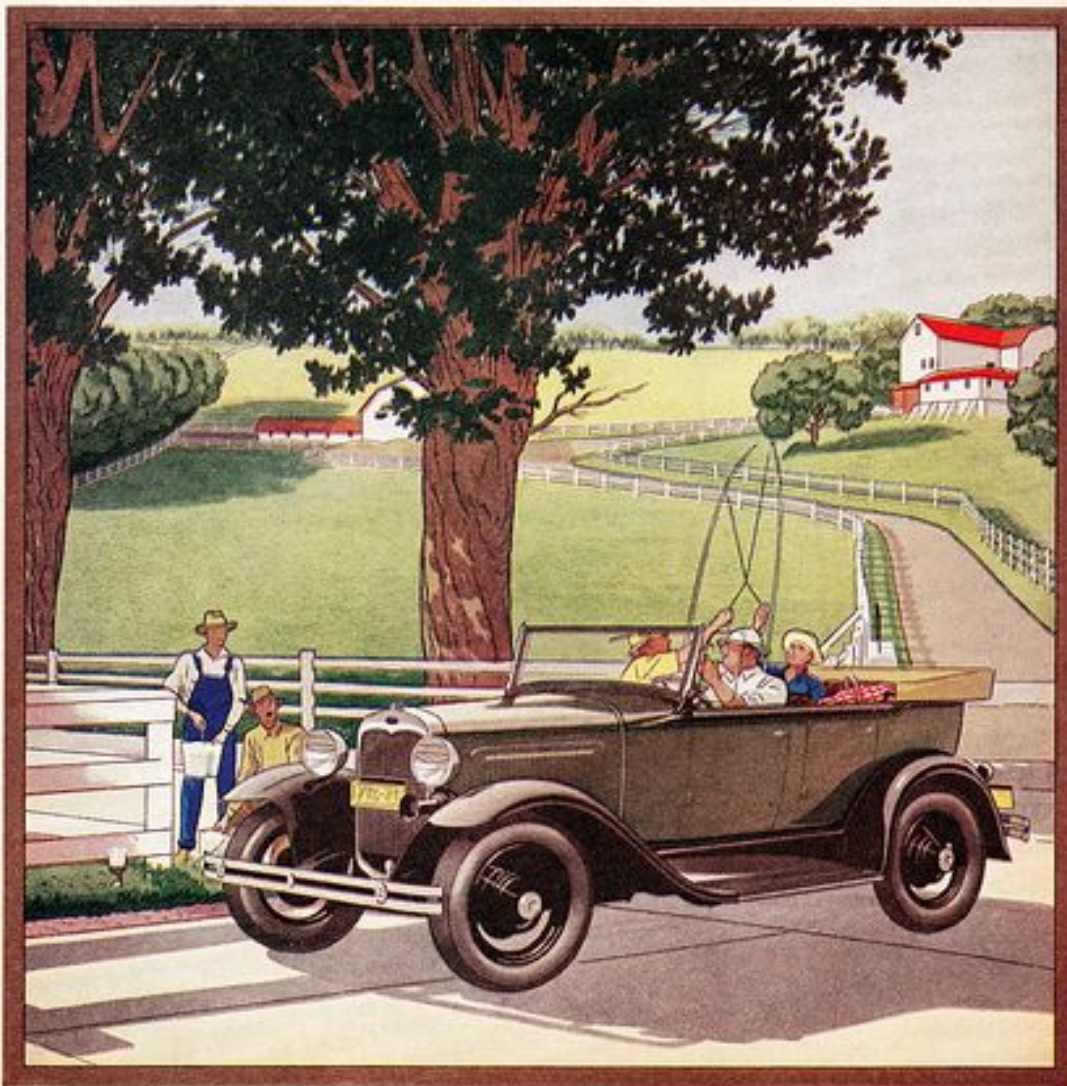
Built for many thousands of miles

THE new Ford has been designed and built to give you many thousands of miles of faithful, economical service.

Beneath its flashing beauty of line and color—in those vital mechanical parts which you may never see—is a quality of material and craftsmanship in manufacture unusual in a low-price car. Its sturdy strength, reliability and capable performance, in all

weather and under all conditions, make it a particularly good choice for farm use.

It stands up under the added strain of bad roads and hard daily usage in a way that has always been characteristic of the Ford car. The experience of the passing months and years will increase your satisfaction in its performance and confirm your first impression that it is a "value far above the price."



THE NEW FORD PHAETON

Source: Ford Model A Advertising on Pinterest

Model A ERA Clothing Fashions

The
JOHNSTON & MURPHY
Shoe for Men

Thoroughbreds... The spirited pony--the master, perfectly attired.
And no essential contributes so largely to the horseman's appearance as the smartest of America's riding boots fashioned by Johnston & Murphy. For riding, walking, evening wear... a fastidious choice of designs, always associated with a gentleman's wardrobe.

THE *Johnston & Murphy* SHOE



The low Jodhpur and the high Riding Boot are two excellent "Superior J & M" shoes are sold by a leading shop near you.

Source: Phillip Lenssen at vintageadbrower.com

Annual Club Tour and Picnic



Tech Q&A - Tips from MAFCA Members

Authentic Model A Colors in a Spray Can

Submitted by: William "Bill" Brum, Raynham, Massachusetts

Achieving an authentic look is important to many of us who choose to restore our car back to its original condition. In the area of painting, it becomes difficult without the training and equipment of a professional. However, for small items such as interior trim and other metal components, spray cans are a viable option.

Once you have the paint code in hand (acquired from guidance in the **MAFCA Paint & Finish Guide** and the PPG or DuPont customer service group), your local distributor for such popular brands can provide the authentic colors in 12 oz. spray cans. Color matching can also be achieved by providing a good sample (I used the windshield visor) to be analyzed at your distributor by hand held color matching equipment.

The spray cans are typically a single component acrylic enamel providing ease of application, excellent shine and durability. Of course, good paint finish requires proper metal prep regardless of the spray equipment utilized.

The spray can shown below contains the popular Copra Drab for a 1930 coupe utilized to paint the dash panel depicted.





Header from the MAFCA Website

MAFCA President's Page - Alex Janke - August 2016



Touring is in full swing and I hope you are getting out on the road with your Model A. The weather has been pretty hot in many parts of the country, but I don't expect it slows us down too much.

Membership renewal notices go into the mail this month along with ballots for the election of your Board of Directors. There are five positions open this year and seven candidates, so your vote is very important. Help shape the future of MAFCA by voting! You must return your ballot by October 15 to be counted, so return it early!

We are also offering the opportunity to receive a digital copy of *The Restorer* along with the hard copy for only \$5 more. Dues remain unchanged at \$40, but if you want the extra digital copy it is just a few dollars more and gives you the ability to access the magazine on any of your Wi-Fi enable devices. Please return your renewal by December 31, 2016 to avoid the late fee.

Revision 4 to the Restoration Guidelines and Judging Standards will soon be available. You may begin pre-ordering with the information in the renewal notices. We are also pleased to offer a new Christmas Card for members featuring the artwork from the 1989 cover of *The Restorer* created by famed artist Norm Sears. Order now, as the holidays will be here before you know it. The renewal packet also contains an order blank for all MAFCA products. They make great Christmas gifts, so plan ahead.

The Board meets in Kalamazoo Michigan on September 15 and then will be at Model A Day at the Museum in Hickory Corners. The meeting will be at the Sheraton Four Point hotel and all are welcome. We all look forward to seeing members at Model A Day as well.

Signups for the National Awards Banquet in Reno, Nevada on December 5 to 8 are flowing in. It promises to be a fun filled event and I hope you will plan to attend. National Awards Banquets are relaxing opportunities to meet with fellow Model A'ers and enjoy a different part of the country without some of the pressures of larger events. Reno usually enjoys great weather this time of year and backs up to the majestic Sierra Nevada Mountains. [Take a look at our website](#) for more information and registration forms.

Please keep contacting the Board and sharing your ideas with us through emails and phone calls. Help us provide you the best possible service and planning for the future. I can be reached at president@mafca.com and I will respond. Hope to see you on the road soon. Alex

Information

The **Model A Ford Club of America, Inc. (MAFCA)** is a California non-profit corporation and a national historical society dedicated to the restoration and preservation of Model A Ford vehicles as manufactured from 1928 through 1931.

MAFCA's members are dedicated to the restoration, preservation, and enjoyment of Ford vehicles of that era. MAFCA is the largest club in the world dedicated to one make of automobile. Volcano A members are urged to join the Model A Ford Club of America, Inc. Visit the MAFCA website for a membership application. Dues are \$40 yearly and include a subscription to **The Restorer**.

2016 National Awards Banquet Reno, Nevada

Hosted by The Sagebrush Chapter



2016 National Awards Banquet
Reno, Nevada - Peppermill Resort
December 5-8, 2016

\$59 per night, if booked by November 2

Come learn the history of the Lincoln Highway.

Enjoy a private Era Fashion dinner party at the
National Automobile Museum

Visit Virginia City, home of Christmas on the Comstock.

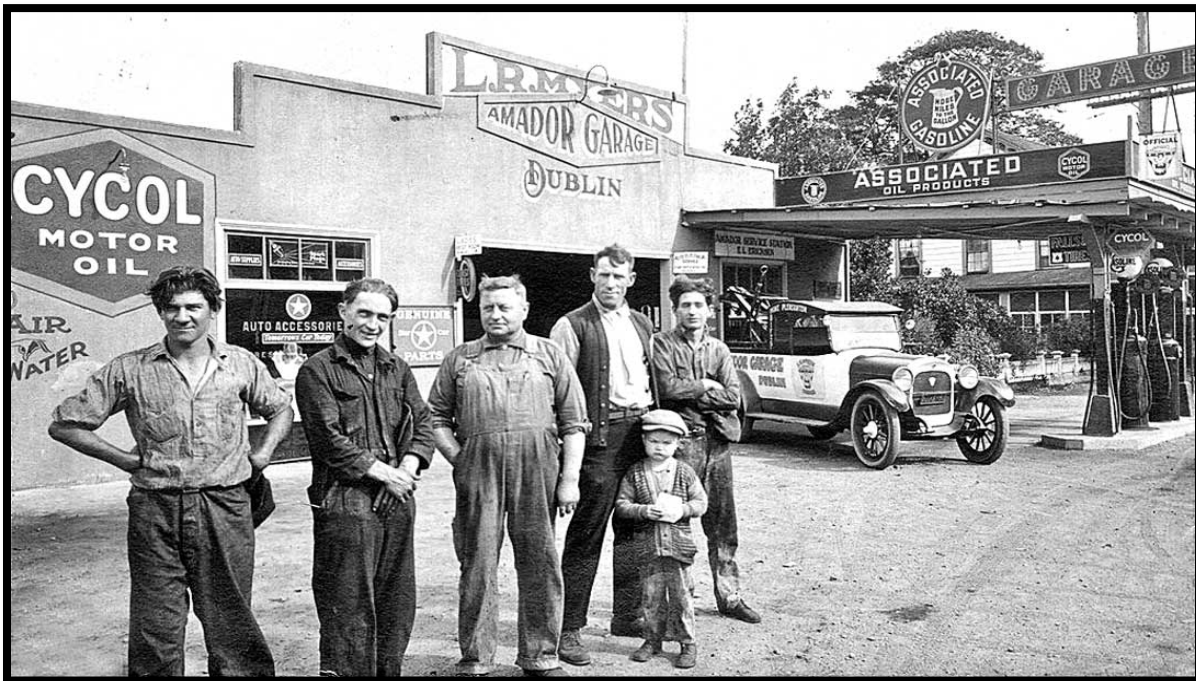


Lava Ladies



October 8th will be our Babies in Need luncheon at Rocky's Pizza. Here's the perfect excuse to buy baby clothes and feel good about donating them for those in need. The more the merrier so please bring a friend, we'll have lots of room and the pizza buffet is awesome.

The Amador Garage, Los Angeles Repair Shop and Filling Station



Source: The Old Motor.com

International Model A Day - Hood River, Oregon

International Model "A" Day

September 17, 2016

Museum Open 9 - 5

Action 10 - 2

Celebrate at

Lunch \$7

Fun Activities
All Day



Western Antique
Aeroplane & Automobile
Museum



Registration: \$10 entry fee per car (Model A or Model T)
(Includes 1 or 2 people museum admission.)

General Admission: \$14 adults, \$12 seniors, \$6 kids

Prizes include: Most Senior Driver, Youngest Legal Driver,
Driver Who Came the Longest Distance



1600 Air Museum Road, Hood River, OR 97031
Information & Registration: (541) 308-1600
www.waaamuseum.org



For Sale Items or Wanted

To place an "Ad" send your information to rrusunen@comcast.net, or call Bob Rusunen at 360-828-5317



For Sale: 1931 Tudor Sedan Model A Ford

**\$18,000.00 cash/no trades
Albany, Oregon**

- ❖ Good driver, 200 Miles on complete overhaul (insert bearings)
- ❖ Synchronized transmission, Mitchell overdrive, Hydraulic brakes
- ❖ F150 steering box, 17" powered coated rims w/Toyo radial tires
- ❖ Electronic Ignition and many extras.....

Call Gene: cell: 541.619.5250 home: 541.926.6390

I would be happy to e-mail a list of all items that have been added.

Support Our Club Suppliers

A&B

Radiator & Speedometer Service

Also Specializing in:
A/C Service Heater Installation
General Auto Repair

8411 E. Fourth Plain
Vancouver, WA 98662

(360) 256-1560
(360) 254-8329

Benny Bennett

Holly Bennett



4219 St. Johns Rd NE • Vancouver, WA 98661 • (360) 993-0284
www.bennyspizzacafe.com

Bob's
PAINT LAND
HOUSEHOLD • AUTOMOTIVE • CUSTOM

Mark Stillman

1501 NE 99th St.
Vancouver, WA 98665
(360) 573-7133

www.bobspaintland.com

C'S AUTO MACHINE SHOP

- FLYWHEEL GRINDING
- RESURFACING
- BORING
- THERMAL CLEANING
- ROD REBUILDING
- BLOCK DECKING
- VALVE GRINDING
- ENGINE REBUILDING
- KNURLING
- PIN FITTING
- PRESS WORK
- ROTORS & DRUMS

JIM

574-4934

OPEN M-F, 8 am-6 pm
800 NE 86th Street
Vancouver, WA 98665

EDM
SPECIALISTS IN
REMOVING BROKEN TAPS,
DRILLS, STUDS & EASY-OUTS

We Save You Money

www.CostLessAutoParts.net

Cost Less Auto Parts™

"NO EXCUSES, Get it done!"

Orchards
360-254-5710

Hazel Dell
360-695-4423

Kelso
360-353-5956

DIVERSIFIED
WELDING WORKS, INC.
Industrial Welding and WaterJet Cutting

WILL BINNS

P R E S I D E N T

willb@diversifiedweldingworks.com

360-576-0929 • 877-835-0724 • 360-573-0824 Fax
8009 NE 19TH COURT • VANCOUVER, WA 98665



HART RADIATOR
Complete Radiator Service

501 Grade Street, Kelso
Fax 360-425-1189

*Auto, Truck & Industrial
Radiators, Heaters, & Air Conditioners*

360-425-6220

Doug Hart
360-430-3615 Cell

Allen Hart
360-430-9169 Cell

RUSTY LUGS

SPECIALIZING IN MODEL A'S

Amanda Uthe
Owner

360-887-3346

Rustylugparts.com

M-F 9am-5pm

8021 Ne 142nd ave

Vancouver, Wa 98682

Volcano View Newsletter
Bob Rusunen, Editor/Webmaster
3720 NW 116th Street
Vancouver, WA 98685



Courtesy from MAFCA - "A" of the Day photos