



**Volcano A's, PO Box 970, La Center, WA 98629**

[www.volcanoas.net](http://www.volcanoas.net)

Meeting: Church of the Nazarene - 16850 NE Fourth Plain Blvd, Vancouver, WA - Second Monday of Month - 7:00 PM

Guys breakfast meeting every Wed. (7:00am) at Hockinson Café, 219 NW 20<sup>th</sup> Ave, Suite 100, Battle Ground, WA

Guys lunch on Fridays (11:30 am) at Benny's Pizza & Café on 4219 St Johns Rd NE, Vancouver, WA

**Volume 6 Issue 9**

**September**

**2017**

*2015 MAFCA Newsletter Certificate of Merit*

*2015 MAFCA Website of the Year*

*2013 MAFCA Newsletter of the Year 2013 MAFCA Website of the Year*

### **2017 Club Officers**

**President:**

Jerry Lane - 360-263-6980

[northforkmuseum@gmail.com](mailto:northforkmuseum@gmail.com)

**Vice President:**

Roger Green - 503-602-2668

[Roger\\_o\\_green@yahoo.com](mailto:Roger_o_green@yahoo.com)

**Treasurer:**

Linda Willey - 360 687-0916

[lindawilley@mac.com](mailto:lindawilley@mac.com)

**Secretary:**

Sherry Rusunen - 360-828-5317

[rrusunen@comcast.net](mailto:rrusunen@comcast.net)

**Member at Large:**

Leonard Willey - 360-687-0916

[lindawilley@mac.com](mailto:lindawilley@mac.com)

**Past President:**

Jack Dusenberry - 360-256-0149

[jdusie@comcast.net](mailto:jdusie@comcast.net)

**Editor/Webmaster:**

Bob Rusunen - 360-828-5317

[rrusunen@comcast.net](mailto:rrusunen@comcast.net)

\*\*\*\*\*

Articles and contributions are encouraged and may be used as space permits. The deadline for all articles is the 20th of the preceding month. The Volcano View is a monthly publication of the Volcano A's Chapter - MAFCA E-mail all proposed articles to: [rrusunen@comcast.net](mailto:rrusunen@comcast.net).

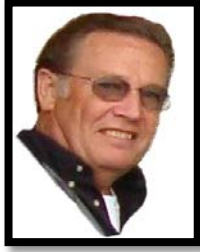
### ***Photo of Month***



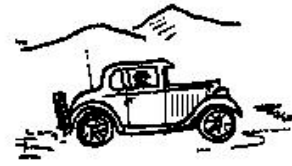
**Model A Lineup While on Picnic Tour**

### ***President's Tour***

***Covered Bridges Tour to  
Salem - Albany Area  
Linn County Oregon  
September 7-8, 2017***



## ***President's Note August 25, 2017***



Summer is flying by so fast, just two weeks ago we enjoyed our annual Club Picnic and Country Tour, especially enjoyed by members who had not seen Lucia Falls before. After the tour, we returned to our place and enjoyed many great dishes brought by members. The tours are a great way to get to know the members and enjoy driving Model A's.

The President's Tour is coming up September 7<sup>th</sup> & 8<sup>th</sup> which is a Thursday and Friday. We will be touring to the covered bridges in the Salem - Albany area. Bring your cameras for the many photo opportunities. We will meet at Fred Meyer's on Mill Plain and Chkalov, south parking lot near the gas station at 8:30.

See you there,

**Jerry**

---

### **Committee Chairs**

**Community Service:** Joyce Swartz/Tom Ryan

**Garage Workshop:** Tom Pagel

**Library/Historian:** Open

**NW Regional Rep:** Jack Dusenberry

**Public Relations:** Dian Lane

**Refreshments Coordinator:** Nancy Wooldridge

**Sunshine:** Pat Dusenberry

**Tour Director:** Roger Green

### **Celebrate Labor Day**



#### ***Front Page Photo***

*Some of the Model A's parked at Lucia Falls during the Annual Club Picnic Tour.*

In September 1931, eleven-year old Jackie Chapman becomes the youngest pilot to fly a biplane solo.

**Volcano A's General Membership Meeting Minutes**  
**August 13, 2017**

**CALL TO ORDER:** 10:30 am by President Jerry Lane.

**Guests:** Dickson Lee introduced his daughter Stacia. Roger Green introduced Jerrod Wickum, who then introduced his son, Michael and also Pat and Mary Ellen Cline. Welcome!

**TREASURER:** Linda Willey gave the financial report.

**Tours:** Our annual picnic and excursion to Lucia Falls today is our Aug. tour! Our President's Tour will be detailed by the president.

**Lava Ladies:** There will be Bunco at Marylan Kelly's home on Sat. Sept. 9. Babies In Need is scheduled for Sat. Oct. 14<sup>th</sup>. Details to follow. Dian Lane announced that the 4<sup>th</sup> of July parade and picnic were a huge success and so much fun!! Thanks to Roger and Kathy Green for opening their home up to our club!!

**OLD BUSINESS:** The minutes of the last meeting were approved and seconded by Roger Green and Dian Lane.

**NEW BUSINESS:** Jerry Lane announced the President's Tour is Sept. 8<sup>th</sup> and 9<sup>th</sup>. We will be touring the covered bridges in the Albany/Salem area. Meet at Fred Meyer's parking lot on Chkalov and Mill Plain at 8:30am. Roger Green stated that Webmaster, Bob Rusunen, sent club pictures to MAFCA's website and they were featured last week!!

**ADJOURNED:** Meeting was adjourned by Jerry Lane.

Submitted by Sherry Rusunen.



**Lava Ladies**

**Bunko - September 9<sup>th</sup> at 2:00 PM**

We need 12 ladies to make it work and right now we have 7 signed up. Bunko is a fun and easy dice game so please plan to attend - bring a friend!! Marylan Kelly is hosting this event at her home so please call her to sign up!!

Marylan can be reached at home: 360 687-4649 or on her mobile: 360 909-4649. There will be snacks and even some prizes, hope to see you there!!

## President's Tour



### ***Covered Bridge Tour Linn County Oregon September 7th & 8th***



ROOM TYPE	RATE
09/07/2017	
	Thursday
King	\$109.00
Double Queen	\$109.00

From Albany Comfort Suites:

My name is Jacqueline Osborne and I am the Sales Coordinator here at the Comfort Suites. Working closely with the Director of Sales, Leigha Thomas, it is my job to ensure all of your needs and expectations are exceeded! I want to extend my welcome on behalf of the hotel. We are so glad you've chosen to stay with us.

Your group block is set up in our system and reservations may now be made. Just give the front desk, or central reservations, a call at 541-928-2053 and ask for the "Volcano A's Car Club" in order to be extended that great negotiated rate.

If you have any questions, or would like to talk specifics, don't hesitate to give me a call. I'm here to help!

**Jacqueline Osborne**

Sales Coordinator

Comfort Suites

100 Opal Ct NE

Albany, Oregon, 97322

Hotel: 541-928-2053

Direct: 541-917-6142

Fax: 541-928-2592

[jacques.osborne@comcast.net](mailto:jacques.osborne@comcast.net)

**Meet Thursday, September 7th, 8:30 AM**

**At Chkalov Fred Meyers near gas station**

**Let us know if you're coming !!**

**Questions? Call Jerry Lane 360 600-3158**

## **HAPPY ANNIVERSARY**

- 1 Don & Dolores LaBarre
- 6 Richard & Sandra Pargman
- 7 Darrel & Linda Freimuth
- 12 Ron & Jane Hall
- 13 Raymond & Kathy Neilsen
- 14 Don & Ruby Knudsen
- 17 Jerry & Dian Lane
- 20 Sam & Connie Salzman
- 23 Deon Schroeder

## **HAPPY BIRTHDAY!**

- 13 Ginny Bay
- 13 Sharon Cook
- 13 Bryan Sutherland
- 16 Jim Harp
- 19 Jeff Meghan
- 22 Jack Dusenberry
- 28 Richard Simpson
- 30 Sherry Rusunen

Note: Periodically some materials printed in our newsletter may have been borrowed from other club newsletters. We thank other clubs for sharing their newsletters with the Volcano A's. Also, when sources are known they will be included.



## **Ford Photo of the Month**



1929 165-A Std Fordor Murray

## **Refreshments**

**September:** MJ Peden & Linda Freimuth

**October:** Joyce Swartz & Carma Huset

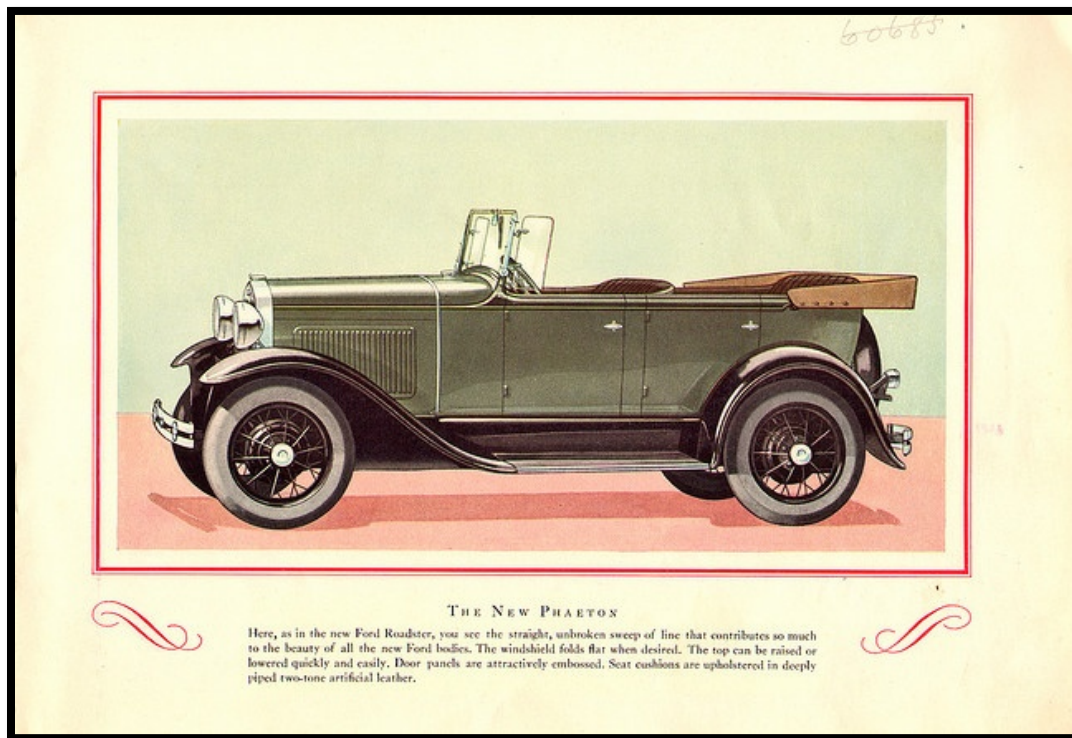
**November:** Roberta Emerick & Dianne Earnest

**December:** Holiday Potluck @ Lane's





## Ford Advertisement



Source: Ford Model A Advertising on Pinterest

## Model A ERA Fashions



Source: Phillip Lenssen at vintageadbrowser.com

## **HOOD ALIGNMENT**

If you are in the process of doing a “ground-up” restoration on your Model A, take a careful look at your frame for any possible sagging in the area of the motor supports and steering gear mounting holes. It is a good idea to put a little bow in both sides of the frame in these areas. If you choose to let the frame go “as is” you may find when the car is almost finished that your hood doesn’t fit. There may be a gap between the hood and the body at the lower rear hood corners.

Don’t despair, it is still not too late to tweak the frame. This can be accomplished in the following steps:

1. Loosen the two radiator support rods.
2. Start with the driver’s side (left) of the frame, anchor the front frame horn to the ground with a suitable length of chain. A suitable “dead man” is necessary.
3. Now place a hydraulic jack under the frame near the motor support.
4. Raise the car until the rear wheel is several inches off the ground yet the front wheel is still anchored down.
5. If this hasn’t reshaped the frame, stand on the rear bumper and jump up and down until the frame yields slightly. Having reshaped the left side, move over to the right side and repeat.

## **Patent Cures**



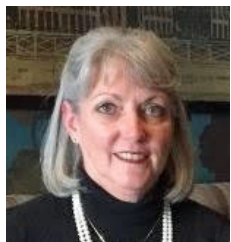
**Red E. Power**



Header from the MAFCA Website

## MAFCA President's Page – Happy Begg

**August 2017**



We are fortunate that in four short years, the Ford Motor Company produced close to 5 million Model A's. There were many improvements and new features to the New Ford over the Model T. This was especially exciting for ladies! Imagine the independence of not having to ask a man to come crank the car for you!

In July, I made a trip to the Gilmore Car Museum in Hickory Corners, Michigan, home of The Model A Museum. The Model A Museum continues to get better and better. A new exhibit is being worked on at this time. An unusual and rare 1931 Model A Two Door Right Hand Drive Phaeton (Great Britain manufactured) has arrived on loan as the spotlight vehicle for the new "Model A 'Round the World" exhibit. This exhibit will tell the story of Model A's manufactured and assembled all over the world.

On Friday, September 15, the MAFCA Board of Directors will hold the next Board meeting in the Board Room of the Gilmore Car Museum. This coincides with Model A Days at the Museum in Hickory Corners, Michigan. On Saturday, September 16, all of the MAFCA Board members will be at the Museum to spend the day with members new and old. Also, on Saturday, Jim Cannon, MAFCA's 2017 Technical Director, will be presenting a seminar on troubleshooting the Model A. This should be very interesting, and all are invited to come.

I hope you have registered for the National Tour coming up next month! The Bakersfield Chapter has worked hard to provide a safe and fun tour from central California up to the San Francisco Bay area. The tour will have you driving along the beautiful coastline and through parts of the farmlands of the central valley. This is going to be a great tour and you aren't going to want to miss it! Registration material can be found on the MAFCA website.

You will be receiving your membership renewal notice in the next few weeks. Please return it promptly, as you don't want to miss out on any issues of The Restorer Magazine or your other membership benefits. This year, you will not be receiving a ballot for the nominees for the Board of Directors. That is because there will be no election this year as the number of nominees equaled the number of positions to be filled. Per the MAFCA By Laws, Article 5 Section (c) (7) Waiver of Election: "If, after the close of nominations, the number of people nominated for election to the Board of Directors is not more than the number of the Directors to be elected, the Board of Directors may, without further action, declare that those nominated and qualified to be elected have been elected." The Board declared the nominees to be elected during a conference call on June 27, 2017.

The newly elected Board members should be familiar to you, as they each have served our membership in years past. They are Alex Janke from California, Doug Clayton from California, Dan Foulk from California, and Doug Linden from Massachusetts. All of these men will be installed to the Board in December at the National Awards Banquet in Oklahoma City, Oklahoma. I look forward to seeing you there to celebrate their election to the Board and to honor those who have worked hard this year to promote the hobby and the Model A Ford Club of America.

I hope you will get out and take your A for a drive. It will put a smile on your face and all you pass by along the way.



<u>Information</u>	<u>Future MAFCA Events</u>
<p>The <b>Model A Ford Club of America, Inc. (MAFCA)</b> is a California non-profit corporation and a national historical society dedicated to the restoration and preservation of Model A Ford vehicles as manufactured from 1928 through 1931. MAFCA's members are dedicated to the restoration, preservation, and enjoyment of Ford vehicles of that era. MAFCA is the largest club in the world dedicated to one make of automobile. Volcano A members are urged to join the Model A Ford Club of America, Inc. Visit the MAFCA website for a membership application. Dues are \$40 yearly and include a subscription to <u><a href="#">The Restorer</a></u>.</p>	<p><b>MAFCA Board of Directors Meeting</b> 2017 - September 23 - Gilmore Car Museum Hickory Corners, Michigan</p> <p><b>MAFCA National Tour</b> 2017 - September 24-29 - Pacific Coast Hwy Host: Bakersfield Chapter</p> <p><b>MAFCA National Awards Banquet</b> 2017 - Nov 29 - Dec 3 - Oklahoma City, OK Host: Sooner Model A Club of Oklahoma City</p> <p><b>MAFCA National Convention</b> 2018 - June 24-29 - Reno-Sparks, Nevada Host: Northern California Regional Group</p>

### **2017 MAFCA National Tour- September 24-29**



Beginning in Paso Robles, CA with dinner at the Estrella War Birds Museum, then touring out to Cambria, CA to pick up the Pacific Coast Highway. From there we will wind our way north on CA Hwy 1 to San Simeon and the Hearst Castle, then it is on up the coast to Half Moon Bay, Big Sur, Carmel, Monterey Bay, San Francisco and over the Golden Gate Bridge. The tour will end in Napa Valley.

### **MAFFI Newsletter Minute**

We are in the last-minute preparations for Model A Day, Sept. 16, 2017 and hope that many of you have made your plans to attend. In addition to the new displays in the museum, a 1931 Standrive Milk Truck, a right-hand drive Phaeton produced in England, and a Russian built GAZ engine inside the museum we will have a couple of interesting and rare vehicles outside the museum (weather permitting). This year's technical seminars will be on Front End Assembly and Repair, Installing a Cell Phone Power Outlet in 6-volt Model A, Roadside Trouble shooting, Model A Accessories and for the ladies, a fashion seminar "Vintage in Style; From Pouch to Purse". (There is a small charge of \$5/person for each seminar.) Last but not least is the all-day swap meet and the membership meeting and Hall of Fame ceremony!! Don't forget to bring your MAFFI membership card for free admission to the museum.

Thank you for your continued support of the Model A Ford Museum.

Loukie Smith

MAFFI president

## Annual Club Picnic Photos





# International Model "A" Day

## September 17, 2016

Museum Open 9 - 5

Action 10 - 2

Celebrate at

Lunch \$7

Fun Activities  
All Day



Western Antique  
Aeroplane & Automobile  
Museum



Registration: \$10 entry fee per car (Model A or Model T)  
(Includes 1 or 2 people museum admission.)

General Admission: \$14 adults, \$12 seniors, \$6 kids

Prizes include: Most Senior Driver, Youngest Legal Driver,  
Driver Who Came the Longest Distance



1600 Air Museum Road, Hood River, OR 97031  
Information & Registration: (541) 308-1600  
[www.waaamuseum.org](http://www.waaamuseum.org)



### Portland, Oregon: Late-Thirties Rush Hour Street Scene



This busy street scene photo was taken in the late-thirties on SW 4th Avenue in Portland, Oregon during rush hour. The policeman in the light coat is directing traffic at the intersection of the Avenue with SW Yamhill Street. Fred Meyer's Yamhill Auto Supply, a parts and supply store is located on the right-hand side of the cross street on the corner.

Based on the vehicles visible in the image, two of which have radiator winter fronts, this picture could have been taken as early as late in the fall of 1937 as there is at least one 1938 car on the Avenue; the earliest automobiles appear to be late-twenties models. A view of the scene today apparently indicates that none of the buildings have survived and have been replaced by modern structures.

Source: The Old Motor.com

### For Sale Items or Wanted


To place an "Ad" send your information to [rurusunen@comcast.net](mailto:rurusunen@comcast.net), or call Bob Rusunen at 360-828-5317

**Wanted:** A rebuildable 2 tooth steering box and 2 17" ford wheels. Please contact Roger Green at [roger\\_o\\_green@yahoo.com](mailto:roger_o_green@yahoo.com).



## Support Our Club Suppliers

Benny Bennett
Holly Bennett



**Benny's  
ROD & CUSTOM  
Pizza Cafe**

4219 St. Johns Rd NE • Vancouver, WA 98661 • (360) 993-0284  
www.bennyspizzacafe.com

### C'S AUTO MACHINE SHOP

- FLYWHEEL GRINDING
- RESURFACING
- BORING
- THERMAL CLEANING
- ROD REBUILDING
- BLOCK DECKING

- VALVE GRINDING
- ENGINE REBUILDING
- KNURLING
- PIN FITTING
- PRESS WORK
- ROTORS & DRUMS

**JIM**  
**574-4934**

EDM  
SPECIALISTS IN  
REMOVING BROKEN TAPS,  
DRILLS, STUDS & EASY-OUTS

OPEN M-F, 8 am-6 pm  
800 NE 86th Street  
Vancouver, WA 98665

***We Save You Money***      [www.CostLessAutoParts.net](http://www.CostLessAutoParts.net)

## Cost Less Auto Parts™

**"NO EXCUSES, Get it done!"**

**Orchards**  
360-254-5710

**Hazel Dell**  
360-695-4423

**Kelso**  
360-353-5956

Amanda Uthe  
[RustyLugParts.com](http://RustyLugParts.com)

### Rusty Lugs Rod's & A's

Open: M-F 9am-5pm

Formerly:  
Floyds Model A Parts

8021 NE 142nd Ave  
Vancouver, WA 98682

p. 360-887-3346  
[rustylugparts@gmail.com](mailto:rustylugparts@gmail.com)

### MAFCA At Hershey

MAFCA will once again be at Hershey this year and offering seminars. Dates are October 4, 5, and 6 at the MAFCA Tent Chocolate Field Row CF Spaces 78-83.

Topic will be the Model A Transmission including changes over the years, operation, disassembly, inspection, and assembly. We will have a "cut away" on hand so folks can actually see what happens as the gears change. I have attached a photograph of the "cut away".



Source: What is Going on in the World of MAFCA

***Volcano View Newsletter***  
***Bob Rusunen, Editor/Webmaster***  
***3720 NW 116<sup>th</sup> Street***  
***Vancouver, WA 98685***



Source: MAFCA A of the Day